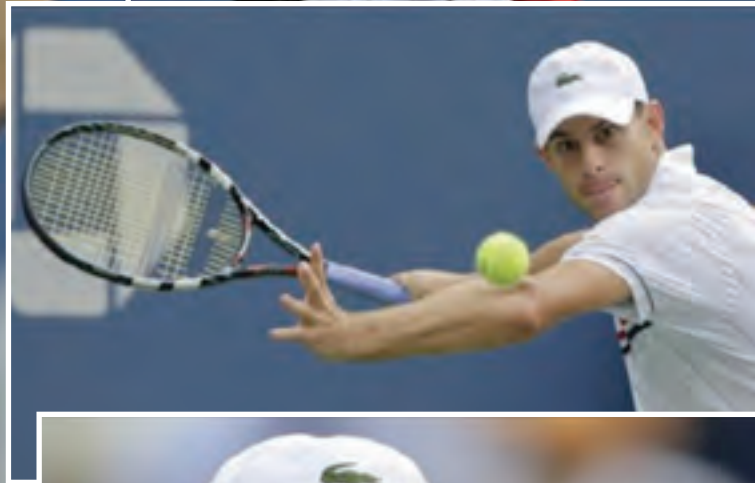


# THE COURT REPORTER

Newsletter of the Walnut Creek Racquet Club

October, 2012



Goodbye Andy...

You will be missed!

“Since I was a kid, I’ve been coming to this tournament. I felt lucky just to sit where all of you are sitting today, to watch this game, to see the champions that have come and gone,” Roddick told the fans. “I’ve loved every minute of it.”



## Walnut Creek Racquet Club

P.O. Box 4574 • Walnut Creek, CA 94596  
(925) 945-0105 • www.wcrc.net

### OFFICERS

<b>President</b>	<b>Sterling Fairholm</b> 595-3576 sterling@fairholminsurace.com
<b>Vice President</b>	<b>Position Open</b>
<b>Secretary</b>	<b>Deanna Fong</b> 952-9935 deanna_fong@yahoo.com
<b>Treasurer</b>	<b>Tammie Snyder</b> 957-0604 tammie@gte.net

### ACTIVITY CHAIRPERSONS

<b>Mailing</b>	<b>Janet Neilsen</b> 837-8664 janneilsen@juno.com
<b>Membership/ Court Facilities</b>	<b>Tim Tamura</b> 228-3962 timbotam@att.net
<b>Newsletter</b>	<b>Tammie Snyder</b> 957-0604 tammie@gte.net
<b>Website</b>	<b>Shari Gonzalez</b> 691-9196 webmaster@wcrc.net
<b>Tournaments</b>	<b>Tammy Chan</b> 324-0524 tchanderson@gmail.com  <b>Lynne Weinschelbaum</b> 285-9503 lweinschelbaum@yahoo.com
<b>USTA Leagues</b>	<b>Bret Jones</b> 890-1416 bretjones@comcast.net
<b>Mixed Doubles Leagues</b>	<b>Pam Maloney</b> 385-7205 pam4tenis@gmail.com
<b>New Member Liason</b>	<b>Position Open</b>  <b>Cory Carr</b> 324-8886 coryccarr@gmail.com
<b>Doubles League</b>	<b>Cameron Coltharp</b> 510-717-2107 ccoltharp@telecarecorp.com
<b>Summer Singles</b>	

## THE PRESIDENT'S REPORT



Sterling Fairholm  
2012 WCRC President

Happy Fall WCRC,

The **Summer Singles tournament** is just around the corner, draws will be out soon and the tournament is set for **October 19-21 and 27-28**. We expect some great tennis so come down and enjoy the end of summer. Fall mixed league

season has just gotten underway and there is lots of room left for new entries. This is the best time of the season to play before the rain comes, join a division online or contact the league coordinator if you have any questions.

The USTA has rocked the boat a bit in the senior's community with the launch of all new senior leagues. The new 40 & over league team sign up's will begin in November and the season starts in January.

The USTA mixed regular season has just ended and as expected we have lots of teams involved in the playoffs that will take place over the next couple weekends. Good luck to each division and we hope to send lots of you to districts.

See you on the courts,

*Sterling*



The 2012 Board has a few positions open. If you are interested in joining the WCRC Board please contact any board member for details. You can also check out any board positions responsibilities on line at: [www.wcrc.net/](http://www.wcrc.net/)

[About/Board.aspx](#).

Contact Sterling Fairholm with any questions at [sterling@fairholminsurace.com](mailto:sterling@fairholminsurace.com)



**New Member  
Information  
Removed for  
Privacy**



# WCRC Fall Mixed Doubles League Registration Form (Also on-line at [www.wcrc.net](http://www.wcrc.net))

MALE PLAYER

FEMALE PLAYER

Name \_\_\_\_\_

Mailing Address \_\_\_\_\_

City \_\_\_\_\_

ZIP Code \_\_\_\_\_

Home Phone \_\_\_\_\_

Work or Cell Phone \_\_\_\_\_

E-mail address \_\_\_\_\_

NTRP level \_\_\_\_\_

WCRC Member?  YES  NO

YES  NO

**Division for which you are registering (please check one):**

Mixed 6.0

Mixed 7.0

Mixed 8.0

Mixed 9.0

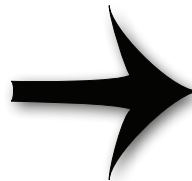


On-Line Registration will remain open until **December 1, 2012**.  
If you would like to register by mail, return this form by **October 1, 2012** with a check for registration fees (payable to WCRC) to:  
WCRC, 970 Janet Lane, Lafayette, CA 94549.

**Questions?**

**Call Pam Maloney at 925-385-7205  
or via e-mail [pam4tenis@gmail.com](mailto:pam4tenis@gmail.com)**

**Find detailed Information on page 5...**



**League Information:** Players may enter the WCRC Mixed Doubles League in more than one division (i.e, 6.0 and 7.0), as long as he/she is not playing below his/her level. If a player is entering in more than one division, he/she may enter with the same partner or a different partner but may not enter with different partners at the same level.

Once League play is complete and registration for the end-of-League Tournament begins, a player may **NOT** enter the Tournament at more than one level. **No exceptions!**

# WCRC Fall Mixed Doubles League Registration Form (Also on-line at [www.wcrc.net](http://www.wcrc.net))

We will continue to offer on-line scoring and real-time updated standings for all four (4) divisions. Don't forget that the league registration fee includes unlimited regular season doubles matches, a league gift and may include an end of the season tournament dependent upon weather and court scheduling.

**LEAGUE COMMISSIONER** Pam Maloney: 925-385-7205

**DATES** September 3, 2012 - January 6, 2013

**ENTRY FEES**

WCRC Members  
On-Line Registration: \$17.50 (\$35 per team)  
Mail In Registration: \$22.50 (\$45 per team)

Non WCRC Members  
On-Line Registration: \$27.50 (\$55 per team)  
Mail In Registration: \$32.50 (\$65 per team)

**FORMAT** Mixed Doubles, 16-week regular season  
(players grouped by combined NTRP level; ie. 7.0 can be a 4.0 man and a 3.0 woman or two 3.5 players)

**NTRP LEVELS** Mixed 6.0-9.0

**SCHEDULING** This is an open schedule. Players are responsible for scheduling their own matches. Players will be provided with a contact list of participants within their division.

**MATCH FORMAT** Best two-out-of-three set format, 12-point tiebreaker (regular scoring). No SUPERTIEBREAKERS! Both teams responsible for bringing balls to match; winning team gets unopened can. Matches should be played according to the "Rules of Tennis."

**TOURNAMENT** End of season tournament with draw determined by the league standings to be held over a weekend TBD dependent upon court scheduling and weather. To qualify for the tournament, teams must have completed and reported at least 4 matches during the regular league season. Depending on the number of entrants tournament play may include Friday night play. In addition, draws with large numbers of players may be required to play matches prior to the tournament weekend. Seeding for the tournament will be based on regular season standings. The more matches you and your partner play, the higher your ranking will be.





## What's Happening at the Courts?

**Fall Classes:** The fall session of classes at the Walnut Creek Tennis Center is off to a great start. Joe Noth, our tennis director, is busy managing over 62 hours of group tennis classes per week. These classes have been very successful for both adults and junior level players. There are a few spots left in these classes, so stop by the office at Heather Farm or go to [www.lifetimetennis.com](http://www.lifetimetennis.com) to check out the 2012 Fall Schedule.

**Monthly Pass Holder's Special:** During the month of October all Court Usage Pass Holders will receive a new vibration dampener and an over-grip for their racket. In addition to these gifts, Lifetime Tennis will also be offering all Pass Holders a FREE Cardio Tennis Clinic on Wednesday, October 17<sup>th</sup> from 7:00-8:00pm. Stay tuned to hear about what our November Special will be!

### Want to Play with the Pro?

Joe Noth will be running our Friday Night Round Robin from 8:00-10:00pm. Sign up in the office at the Walnut Creek Tennis Center. \$4.00 Pass Holders, \$8.00 Non-Pass Holders



Congratulations to our September Pass Holder, Sue Walsmley, who won \$100 Pro Shop credit in our US Open Challenge!



Our US Open Mixer was a fabulous success. A special "thanks" goes out to Babolat who donated all prize packages for our winners.

# CALENDER OF EVENTS

## Oct

Oct 1	USTA Combo Doubles Opens
Oct 5-7	USTA Mixed League Playoffs Round 2
Oct 12-14	USTA Mixed League Districts & Sectionals
Oct 19-21	WCRC Summer Singles Tournament
Oct 27	WCRC Summer Singles Tournament

## Nov

Nov 19	USTA Adult 40+ Registration
--------	-----------------------------

## Dec

Dec 2	USTA Fifty Mixed Ends
Dec 3	USTA Mixed 55+ Registration
Dec 7-9	USTA Fifty Mixed Playoffs Round 1
Dec 14-16	USTA Fifty Mixed Playoffs Round 2
Dec 31	USTA Adult 65+ Registration

## Jan

Jan 7	USTA Adult 40+ Season Opens
Jan 13	WCRC Mixed Doubles League End
Jan 20	USTA Combo Doubles Ends
Jan 25-27	USTA 50 Mixed Sectionals
Jan 28	USTA Mixed 55+ Season Opens

## TREASURER'S REPORT

Tammie Snyder

as of August 31, 2012



### Walnut Creek Racquet Club Profit and Loss Standard January through August 2012

	<u>Jan - Aug '12</u>
<b>Ordinary Income/Expense</b>	
<b>Income</b>	
Advertising Income	175.00
Calcutta Auction	2,620.00
Court Services	15.00
League Dues	12,991.47
Membership Dues	13,454.43
Tournament Dues	374.00
	<hr/>
<b>Total Income</b>	29,629.90
<b>Expense</b>	
Bank Service Charges	208.14
Board Meeting	639.43
Calcutta Expenses	5,511.62
Dues and Subscriptions	40.00
Fall Mixed Tournament Expenses	490.00
Filling Fees	55.00
Mixed Double Expenses	2,177.04
Office Supplies	11.14
Postage and Delivery	485.93
Printing and Reproduction	4,924.42
Professional Fees	175.00
Tax Preparation	435.00
Tennis Balls	480.00
Tournament Food	2,776.62
Website	604.55
Winter Doubles Expenses	4,821.82
	<hr/>
<b>Total Expense</b>	23,835.71
	<hr/>
<b>Net Ordinary Income</b>	5,794.19
<b>Other Income/Expense</b>	
Other Income	
Interest Income	19.76
	<hr/>
<b>Total Other Income</b>	19.76
	<hr/>
<b>Net Other Income</b>	19.76
	<hr/>
<b>Net Income</b>	<b>5,813.95</b>
	<hr/> <hr/>
<b>Balance as of August 31, 2012</b>	<b>\$54,356.66</b>



WCRC  
P.O. Box 4574  
Walnut Creek, CA 94596  
www.wcrc.net

## Summer Singles League - Standings

### Men's

<b>3.0</b>	<b>W</b>	<b>L</b>
Raanan Sagy	10	1
<b>3.5</b>		
Joseph Alcantara	20	3
<b>4.0</b>		
Ken Bakar	20	3
<b>4.5</b>		
Micah Cavin	12	3

### Women's

<b>2.5</b>	<b>W</b>	<b>L</b>
Cheryl Enos	5	1
<b>3.0</b>		
Martha Spanos	8	3
<b>3.5</b>		
Jessi Knight	8	3
<b>4.0</b>		
Nancy O'Neil	14	0
<b>4.5/5.0</b>		
Kirsten Riker	6	0