



# THE COURT REPORTER

*Newsletter of the Walnut Creek Racquet Club*

March, 2011

**Rain, Rain Go Away**

photo by: Robert Young

## Walnut Creek Racquet Club

P.O. Box 4574 • Walnut Creek, CA 94596  
(925) 945-0105 • www.wcrc.net

### OFFICERS

<b>President</b>	<b>Sterling Fairholm</b> 595-3576 sterling@fairholminsurance.com
<b>Vice President</b>	<b>Position Open</b>
<b>Secretary</b>	<b>Deanna Fong</b> 952-9935 deanna_fong@yahoo.com
<b>Treasurer</b>	<b>Tammie Snyder</b> 957-0604 tammie@gte.net

### ACTIVITY CHAIRPERSONS

<b>Mailing</b>	<b>Janet Neilsen</b> 837-8664 janneilsen@juno.com
<b>Membership/ Court Facilities</b>	<b>Tim Tamura</b> 228-3962 timbotam@att.net
<b>Newsletter</b>	<b>Tammie Snyder</b> 957-0604 tammie@gte.net
<b>Website</b>	<b>Shari Gonzalez</b> 691-9196 webmaster@wrcr.net
<b>Tournaments</b>	<b>Tammy Chan</b> 324-0524 tchanderson@gmail.com  <b>Cory Carr</b> 324-8886 coryccarr@gmail.com
<b>USTA Leagues</b>	<b>Bret Jones</b> 890-1416 bretjones@comcast.net
<b>Day &amp; Mixed Leagues/Publicity</b>	<b>Pam Maloney</b> 787-3970 pam4tenis@gmail.com
<b>New Member Liason</b>	<b>Nancy LeSage</b> 937-9802 nlesage@astound.net
<b>Marketing/ Doubles League</b>	<b>Lynne Weinshelbaum</b> 285-9503 lweinshelbaum@yahoo.com
<b>Summer Singles</b>	<b>Cameron Coltharp</b> 510-717-2107 ccoltharp@telecarecorp.com

## THE PRESIDENT'S REPORT



**Sterling Fairholm**  
2011 WCRC President

As the 2011 tennis season starts to get serious the weather hasn't let up.

The seniors teams were just barely able to get their matches in on time and we have an incredible 7 teams headed to the playoffs so we wish them all good luck.

Adult League schedules are now posted on the USTA site and the start of the season is less than one month away. There are 17 teams signed up out of our club which is outstanding. We also have 2 Super Seniors teams that are about to get underway as well.

Everyone's favorite tournament of the year **The Calcutta** is two months away **April 30th**. Sign-ups are open now and are limited so if you are going to play be sure to sign up right away. This is a very popular tournament and gets filled up fast! Everyone is welcome to the Friday night auction on **April 29th** to bid on their teams and seek out the ringers.

We are also about at the half way point for winter doubles so as the courts dry up be sure to get your matches in to qualify for the tournament scheduled for **May 14-15**.

See you on the courts!

*Sterling*



**New Member  
Information  
Removed for  
Privacy**





# Tennis News



## Carollyn Vogler meets up against Fernando Verdasco *By Carolyn Vogler*



I work for 92.1 KKDV as their afternoon drive DJ. The HP Pavilion partners with us a lot as we are the flagship station in the Diablo Valley for the SJ Sharks. As you know, the HP also hosts the SAP Open every year. They asked us to partner with them and promote this event too. One of

their ideas was to take one of our DJ's and see if they could return Verdasco's serve. Lucky for me, I play tennis so it was a great fit!

I went on court, Verdasco kissed me, which ROCKED (picture below). I then got a chance at 8 of his serves. His first 2 were 111+. I swung and missed both. The next 2 were kick serves. I missed 1 and hit the other one up the line but it was wide :( It's funny, the serves are coming at you and you really think you've got a handle on them and then they fly past you or bounce up too high. Waaaay easier said than done! Then he slowed it down and hit me some 80mph serves which were more manageable and I returned a couple of those.

Then we hugged, he signed one of the balls that we hit with for me, we took pictures and that was it. It was an outstanding experience to say the least and I am not taking one moment of it for granted.



## Saturday June 25th 9th Annual Ace It! Tournament

Saturday, June 25<sup>th</sup>, 2011, the Orindawoods Tennis Club will host the eighth annual Ace It fundraiser for breast cancer. Because of your generous contributions over the past eight years, the Lamorinda tennis community has raised almost one hundred thousand dollars for breast cancer at this annual event.

The program includes a full day of tennis-related activities to raise money in support of the Carol Ann Read Breast Health Center at Alta Bates Summit Medical Center in Oakland. The day begins with tennis clinics by local pros in the morning, a gourmet lunch and raffle, and a tournament in the afternoon.

\*Attendees can choose to come for the entire day, morning or afternoon (lunch included) or just lunch.

Eight years ago the Carol Ann Read Breast Health Center did not exist. A group of women tennis players in Contra Costa County became aware that many of their friends and acquaintances had experienced tremendous anxiety and inconvenience when faced with a possible diagnosis or course of treatment for breast cancer, not just because of the diagnosis but also because there was no local, centralized place in the East Bay for these services. Diagnosis could take weeks and treatment often required travel to San Francisco or the peninsula and could even mean quitting a job to accommodate appointment schedules.

Register for Ace It! and continue the wonderful spirit of giving begun by the Lamorinda tennis community. Your contribution will make a difference in the fight to eliminate breast cancer.

How: Log on to [www.orindawoodstennis.com](http://www.orindawoodstennis.com) and click on Ace It! in the left hand column. Print, complete and mail the registration form with your check.

Or look for Ace It! registration forms at your tennis club, community tennis facility or ask your USTA team captain for forms. All donations are completely tax-deductible for the entire amount of the registration fee.

We look forward to sharing this wonderful day with you!

Ace It Committee



# Calcutta Party & Tournament: April 29-30

Here's your chance to enter the most popular tournament that the WCRC offers each year - the 2011 Calcutta. Enter early, since the event is limited to the first 32 women and 32 men who register. The format is Mixed Doubles, but you enter individually. You will be paired with a partner by blind draw prior to the tournament and the resulting team given a handicap according to their combined playing abilities. At the Friday night party, you meet your partner and teams are auctioned off to the highest bidder - either individuals or syndicate. Start times will also be announced on Friday night.

Cost is \$20 per person (covers the Friday night party **April 29th** and Saturday tournament **April 30th** in which you are guaranteed a minimum of two matches). Guests may attend the Friday night party at no charge.



**Entry deadline is April 20th.** This is a money tournament, so it is important that you list your current NTRP rating on the registration form below. If you don't have a rating, call us and we can help. If you have any questions or can assist the Tournament Committee with various aspects of this event, please contact **Tammie Snyder** at 957-0604 or at [tammie@gte.net](mailto:tammie@gte.net). All tournament participants must be current WCRC members.

In the WCRC's long Calcutta history, there have been very few instances where the team with the most collective talent ends up winning the tournament.

**Sign up and bring home the money!!!!**

**Sign up on line at [www.wcrc.net](http://www.wcrc.net)**

## Calcutta Tournament Entry Form

Name: \_\_\_\_\_

USTA Rating: \_\_\_\_\_

Phone: \_\_\_\_\_

Email \_\_\_\_\_

Number in your party (including guests) \_\_\_\_\_

I can help score keep

Please make checks payable to WCRC  
(\$20 per player) and send with entry form to:

Tammie Snyder  
209 Blum View Drive  
Martinez, CA 94553

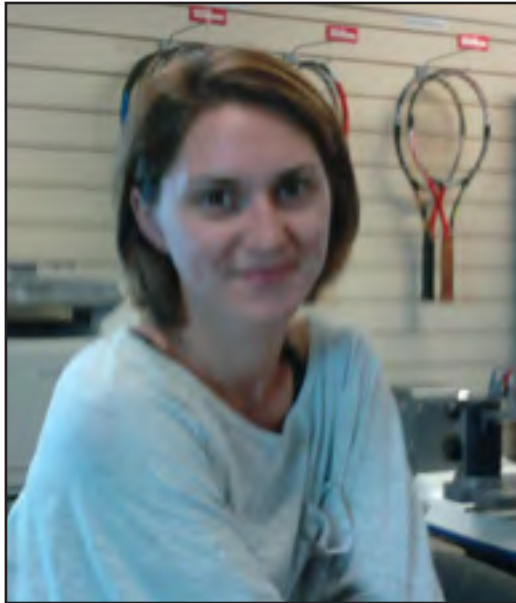
Questions?

Contact Tammie Snyder at (925) 957-0604  
or at [tammie@gte.net](mailto:tammie@gte.net)

**\$20 Per Player • Entry Deadline: April 20th**



# ***Lifetime Tennis***



Samantha Greenlee

Samantha Greenlee works mornings and evenings because she's a student at San Francisco State where she is pre-law.

She seems much too sweet to be an attorney, but since she's pre-law there's always hope. (just kidding)

Samantha lives in Walnut Creek, plays a little tennis and always wears a smile.

## **Second Annual Lifetime Tennis Open House** **Date Changed to Sat., April 16th 1:00-4:00pm**

Drawings for prizes will be held with a special Grand Prize

- Hit for Prizes
- Deal of Year Specials
- French Open Challenge
- Snacks and Giveaways
- Improvements for 2011



# CALENDER OF EVENTS



Mar. 4-6 USTA Senior Playoffs Round 1  
Mar. 18-20 USTA Senior Playoffs Round 2



Apr. 8-10 USTA Senior Districts  
Apr. 29 Calcutta Party  
Apr. 30 Calcutta Tournament



May 6-8 USTA Mixed Playoffs Round 1  
May 9 WCRC Winter Doubles Ends  
May 13-15 USTA Mixed Playoffs Round 2  
May 14-15<sup>h</sup> WCRC Winter Doubles Tournament  
May 20-22 USTA Mixed Districts  
May 30 WCRC Summer Singles Begin



June 4-5 USTA Mixed Sectionals

## TREASURER'S REPORT

Tammie Snyder

as of January 31, 2011



### Walnut Creek Racquet Club Profit & Loss January 2011

	Jan 11
<b>Income</b>	
Advertising Income	150.00
Halloween Spooktacular	-367.83
Interest Income	0.23
Membership Dues	6,530.00
Mixed Doubles League	-50.00
Winter Doubles League Inc.	6,842.50
<b>Total Income</b>	<b>13,104.90</b>
<b>Expense</b>	
Board Meeting Expense	76.50
Court Repairs & Equipment	107.07
Membership Brochures	71.66
Mixed Doubles League Expenses	3,278.12
Newsletters-Court Reporter	394.99
Paypal Fees	439.80
Post Office Box Rental	72.00
Postage	176.00
Supplies	10.00
Website	159.85
<b>Total Expense</b>	<b>4,785.99</b>
<b>Net Income</b>	<b><u>8,318.91</u></b>

Balance January 31, 2011

**\$49,282.35**

Email Tammie Snyder at  
tammie@gte.net to place articles,  
photos or advertising in the April  
issue of the Court Reporter!

**Deadline for the April issue  
is Friday, March 25th.**







WCRC  
P.O. Box 4574  
Walnut Creek, CA 94596  
www.wcrc.net

PRESORTED  
STANDARD  
U.S. POSTAGE  
**PAID**  
Walnut Creek, CA  
Permit No. 432

## Winter Doubles League - Standings

### Men's

<b>3.5</b>	<b>W</b>	<b>L</b>
McBee/Carbajal	5	0
<b>4.0</b>		
Van Oosbree/Goldman	6	2
<b>4.5</b>		
Marsh/Mckie	2	0

### Women's

<b>3.0</b>	<b>W</b>	<b>L</b>
Blackiston/Poppleton	3	1
<b>3.5</b>		
Chiang/Delgado	8	0
<b>4.0</b>		
Douglas/Durate	6	1
<b>4.5/5.0</b>		
Lundstrom/Eversole	4	1