

THE COURT REPORTER

Newsletter of the Walnut Creek Racquet Club

July, 2013

Scarlett Rae Fairholm

June 13, 2013

5:15 am

7 lbs 13 oz

20-1/2" long



Walnut Creek Racquet Club

P.O. Box 4574 • Walnut Creek, CA 94596
(925) 945-0105 • www.wcrc.net

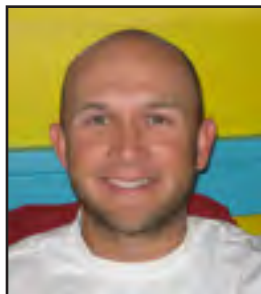
OFFICERS

President	Sterling Fairholm 595-3576 sterling@fairholminsurance.com
Vice President	Craig Lazarchik 510-867-4767 cmlyoda@msn.com
Secretary	Deanna Fong 952-9935 deanna_fong@yahoo.com
Treasurer	Tammie Snyder 957-0604 tammie@gte.net

ACTIVITY CHAIRPERSONS

Mailing	Janet Neilsen 837-8664 janneilsen@juno.com
Tournaments/ Court Facilities	Tim Tamura 228-3962 timbotam@att.net
Newsletter	Tammie Snyder 957-0604 tammie@gte.net
Website	Shari Gonzalez 691-9196 webmaster@wcrc.net
Tournaments	Tammy Chan 324-0524 tchanderson@gmail.com Lynne Weinshelbaum 285-9503 lweinshelbaum@yahoo.com
USTA Leagues	Bret Jones 890-1416 bretjones@comcast.net
Membership	Kranthi Tappita 510-209-1369 nani7676@yahoo.com
Mixed Doubles Leagues	Pam Maloney 385-7205 pam4tenis@gmail.com
City of Walnut Creek Liason	Glenn McBee 984-6710 glennmcbec@gmail.com
Doubles League	Lynne Weinshelbaum 285-9503 lweinshelbaum@yahoo.com
Summer Singles	Cameron Coltharp 510-717-2107 ccoltharp@telecarecorp.com

THE PRESIDENT'S REPORT



Sterling Fairholm
2013 WCRC President

Happy July WCRC!

From the cover you can see that I've had my hands full. Thanks for all the emails, texts and well wishes Erin and I have received!

The Adult Season is winding down congratulations to quite a few teams that are heading to playoffs:

Men's Teams: David Gangarapu's 3., Kranthi "KK" Tappita's 3.5, John Sovik's 3.5, Sterling Fairholm's 4.0, and Victor Lioz' 4.5.

Women's Teams: Patrice Konigsberg's 2.5, Wendy Reiser's 3.0, Myrl Kan's 3.5, Maureen Satcher's 3.5, Carolyn Spady's 3.5, Tammie Snyder's 4.0, Kathy Larragueta's 4.5.

The Adult Mixed and Adult 55 & Over Seasons have already opened with matches starting June 17th! We have 11 mixed teams ranging from 6.0 - 9.0 in addition to seven 55+ teams from 7.0 - 9.0!

If you haven't gotten your fill of tennis there is still the WCRC Summer Singles league for those of you who like to hit the ball in the heat!

A fun membership event the Mid-Summer Tournament is scheduled for Saturday, August 3rd. (Registration form on page 4).

See you on the courts!

Sterling



**New Member
Information
Removed for
Privacy**



Mid-Summer Night Tennis

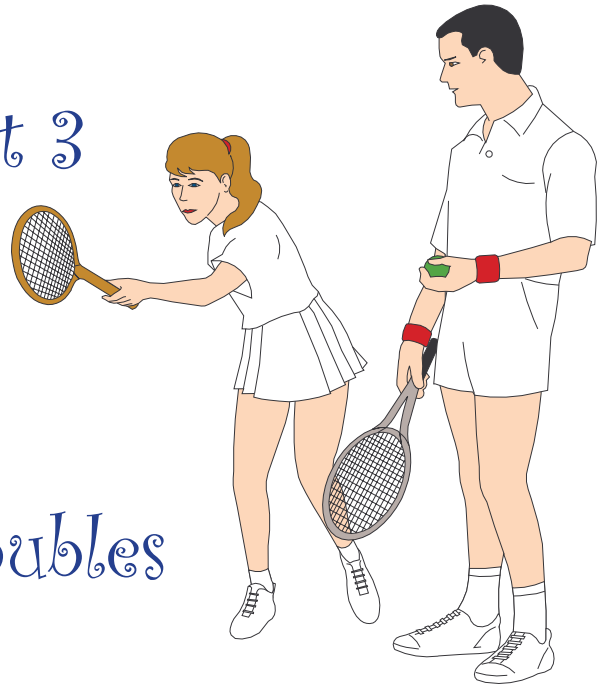
Date: Saturday, August 3

Time: 4:00 pm

Place: Heather Farms

Cost: \$12.00/person

Format: Team Tennis Doubles



Name: _____

Phone: _____

Email: _____

USTA Rating: _____



Please make checks payable to: WCRC and mail to:
WCRC • 209 Blum View Drive, Martinez, CA 94553

Questions? Please contact Tammie Snyder at 925-957-0604
or at tammie@gte.net

or sign up on line at wcr.net



Tennis News



Walnut Creek Racquet Club members **Tim (Kung Fu Panda) Tamura** and **Rusty Lent** take the gold in the 2013 Sonoma Wine Country Senior Games PickleBall tournament.

Tim and Rusty were undefeated through five rounds of play in 97 degree heat in Windsor California. Tim and Rusty took the gold in the 50 to 59 Mens Double age bracket.

Duff Danilovoch also a Walnut Creek Racquet Club member and his partner **Bill Doughtery** took the Bronze in the Mens Double 70 to 79 age bracket.



Now reduced pricing on all newsletter advertising.

New Rate Information

	1x	2x	3x	4x	5x	6x	7x	8-12x
Full page insert	\$75	75	70	70	65	65	60	60
1/2 page	\$45	45	45	40	40	40	35	35
1/4 page	\$35	35	35	30	30	30	25	25
Business Card	\$25	25	25	20	20	20	15	15

For more information or to advertise in an upcoming issue, please contact Tammie Snyder at tammie@gte.net or call her at 925-957-0604



Do you have action shots of WCRC members? I'm always looking for great cover shots for the newsletter. Submit any photos to Tammie at tammie@gte.net.





2013 Men's and Women's Summer Singles Leagues Registration Form



Full Name _____

Address _____

City _____ Zip _____

Home Phone _____

Work Phone _____

Cell Phone _____

Email _____

T-shirt Size M L XL XXL

T-shirt Type Regular V-neck* Tank top*

*V-neck and tank top in women's style only

Current Rating: 2.5 4.5

3.0 5.0

3.5 5.5

4.0

I would like to enter the following division:

Women's 2.5 Men's 3.0

Women's 3.0 Men's 3.5

Women's 3.5 Men's 4.0

Women's 4.0 Men's 4.5

Women's 4.5/5.0 Men's 5.0/5.5

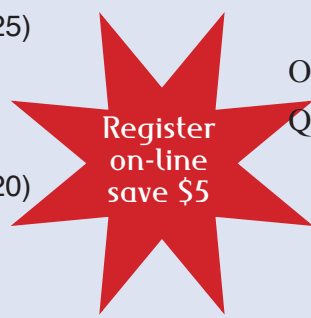
I am a: WCRC Member (\$25)

Non-Member (\$35)

If you register on line:

WCRC Member (\$20)

Non-Member (\$30)



Dates: May 27th - September 30th

Entry Fee: \$25 for WCRC Members
 \$35 for non-members

Format: Men's Singles/Women's Singles

Divisions: Men's 3.0 - 5.0/5.5
 Women's 2.5 - 4.5/5.0

Scheduling: This is an open schedule. Players are responsible for scheduling their own matches. Players will be provided with a contact list of participants within their division.

Match Format: Best two-out-of-three set format. 12 point tiebreaker. Both players responsible for bringing new balls to match. Winner gets unopened can.

Match Site: Any site mutually agreed upon

Scoring: The winner is responsible for reporting the match score by logging on to www.wcrc.net.

Standings: Division standing will be updated on a real time basis as scores are posted

Tournament: End-of-season tournament with draw determined by league standings. Oct. 11-13-21 & Oct. 19

Match Min.: 6 matches

Checks to: WCRC c/o Cameron Coltharp
 336 Blue Ridge Drive
 Martinez, CA 94553

Or Online: www.wcrc.net/Leagues/Signup.aspx

Questions: ccoltharp@telecarecorp.com
 510-717-2107

Register on line at www.wcrc.net/leagues/signup.aspx and save \$5.00

CALENDER OF EVENTS



Jul 1	USTA Mixed Doubles 40+ Registration
Jul 8	USTA Combo Doubles Registration
Jul 14	USTA Adult 18+ Season Closes
Jul 19-21	USTA Adult 18+ Playoffs Round 1
Jul 26-28	USTA Adult 18+ Playoffs Round 2
Jul 29	USTA NorCal 70+ Registration



Aug 3	Mid-Summer Tournament
Aug 9-11	USTA Adult 18+ Districts
Aug 23-25	USTA Adult 18+ Sectionals
Aug 26	WCRC Mixed Doubles League Opens



Sep 2	USTA Mixed Doubles 40+ Season Opens
Sep 8	USTA Adult 55+ Season Closes
Sep 8	USTA Mixed Doubles 18+ Season Closes
Sep 9	USTA NorCal 70+ Season Opens
Sep 16	USTA Combo Doubles Season Opens
Sep 27-29	USTA Adult 55+ Playoffs Round 1
Sep 27-29	USTA Mixed Doubles 18+ Playoffs Round 1
Sep 30	WCRC Summer Singles League Ends



Oct 4-6	USTA Adult 55+ Playoffs Round 2
Oct 4-6	USTA Mixed Doubles 18+ Playoffs Round 2
Fall TBA	Adult 40+ Nationals

TREASURER'S REPORT

Tammie Snyder

as of May 31, 2013



Walnut Creek Racquet Club Profit and Loss Standard January through May 2013

	<u>Jan - May '13</u>
Ordinary Income/Expense	
Income	
Advertising Income	450.00
League Dues	417.50
Membership Dues	11,127.83
Tournament Dues	3,614.12
Total Income	<u>15,609.45</u>
Expense	
Bank Service Charges	20.00
Board Meeting	209.99
Calcutta Expenses	6,314.05
Captains Meetings	103.00
Dues and Subscriptions	135.00
Fall Mixed Tournament Expenses	2,337.51
Gifts	75.95
Member Services	226.00
Miscellaneous	180.00
Office Supplies	11.91
Postage and Delivery	531.49
Printing and Reproduction	719.57
Professional Fees	300.00
Tennis Balls	118.59
Tournament Food	1,002.26
Website	269.70
Winter Doubles Expenses	3,601.02
Total Expense	<u>16,156.04</u>
Net Ordinary Income	-546.59
Other Income/Expense	
Other Income	
Interest Income	7.28
Total Other Income	<u>7.28</u>
Net Other Income	<u>7.28</u>
Net Income	<u><u>-539.31</u></u>
Balance as of May 31, 2013	\$52,627.37

**Deadline for the August issue
is Friday, July 26th.**



WCRC
P.O. Box 4574
Walnut Creek, CA 94596
www.wcrc.net

Summer Singles League - Standings

Men's

	W	L
3.0 Ric Ronci	2	0
3.5 Charan Sarjapur	9	0
4.0 Brian McConnell	8	2
4.5 Steve Dell'anno	3	1
5.0/5.5 no leaders yet	0	0

Women's

	W	L
2.5 Paulina Lee	1	0
3.0 Sara (Min) Zhao	3	0
3.5 Elizabeth Brathwait	2	0
4.0 Heidi Belton	5	0
4.5/5.0 Carollyn Vogler	2	0