



# THE COURT REPORTER

February 2002

Newsletter of the  
Walnut Creek Racquet Club



Men's 60s Veterans World Champion  
Len Saputo prepares to unleash a  
one-handed backhand

## President's Message

As the new president of the WCRC, I would like to say that it is an honor to be part of such a dynamic group of people. I look forward to the new year with its many challenges and I encourage you to bring any ideas



**Robert Young**

you have to our board members or me.

Welcome to new board members Julie O'Keefe (Treasurer), Maria Ley (Junior Activities), Josh Svendsen (Tournaments) and Pam Maloney (USTA Women). Welcome back returning members John Bondon, Jennifer Scriabine, Kent Lindeman, Marilyn Concepcion, Judy Stillman, Shari Huber, Nat Bitton, Tammy Chan, Bill Clayton and Sue Danner. Without the many volunteers who come forward to organize and run things, there would be no Walnut Creek Racquet Club. Thank you all.

With the Park and Recreation Commission's decision not to add any new courts to the Heather Farm master plan, the club will be focusing our energies on improving the courts we already use. Some ideas from last year that are still in the works are: putting up benches on Courts 2 & 9; more seating for fans adjacent to Court 1; opening up the wind screen on Court 1 for better spectator viewing and ultimately lowering the fence on 1 like it is on 4.

The first tournament of the year, the Little Siebel, was a great success. Thanks to Kent Lindeman for serving as tournament director. See page 3 for all the details.

I hope to see many familiar faces on our annual bus trip to the Siebel Open on Friday March 1. We had a great time

*continued on page 6*

## Inside the Reporter

- 3 Little Siebel Champs
- 4 Fields 4.5 King
- 5 New WCRC Website
- 6 Valentine's Day  
Tournament Entry

## Walnut Creek Racquet Club

P.O. Box 4574 ¥ Walnut Creek, CA 94596  
(925) 945-0105 ¥ www.wcrc.net

### OFFICERS

President	<b>Robert Young</b> 906-0614 robert@canterburytrails.com
Vice President	<b>John Bondon</b> 672-4109 john@bondon.com
Secretary	<b>Jennifer Scriabine</b> 939-4328 scriabine@mindspring.com
Treasurer	<b>Julie O'Keefe</b> 335-2321 rbiz2@hotmail.com

### ACTIVITY CHAIRPERSONS

Mailing	<b>Marilyn Concepcion</b> 937-2169 concepcions2@aol.com
Membership	<b>Judy Stillman</b> 933-9351 jstillma@pacbell.net
Newsletter	<b>Kent Lindeman</b> 943-5745 jstillma@pacbell.net
Leagues	<b>John Bondon</b> 672-4109 john@bondon.com <b>Jennifer Scriabine</b> 939-4328 scriabine@mindspring.com
Publicity/ Website	<b>Shari Huber</b> 296-0901 shari_huber@hotmail.com
Tournaments	<b>Nat Bitton</b> 798-2064 windmillnb@aol.com <b>Tammy Chan</b> 837-0227 tammychan@telocity.com <b>Josh Svendsen</b> 962-1782 joshsvendsen@attbi.com
USTA Women	<b>Pam Maloney</b> 939-1403 pamela.maloney@schwab.com
USTA Men	<b>Bill Clayton</b> 932-2325 billclayton@canterburytrails.com
USTA Mixed & Seniors	<b>Sue Danner</b> 939-5758 suedanner@aol.com
Women's Interclub	<b>Rita Utz</b> 935-3365 ritau@aol.com



### NAT BITTON

#### Lifetime Achievement Award

In recognition of his years of dedication and service to the WCRC



### JUDY STILLMAN

#### President's Award

In recognition of her efforts to improve the quality and content of the Court Reporter



### SEAN ZHANG

#### Outstanding Volunteer Contribution Award

In recognition of his efforts to introduce on-line scheduling and scoring to WCRC Singles and Doubles Leagues

## CALENDAR

### FEBRUARY 16

Valentine's Day Tournament

### MARCH 1

Siebel Open Bus Trip (quarterfinals)  
Compaq Center at San Jose

### APRIL 5-7

WCRC Winter Doubles League  
Tournament

### MAY 3-4

Calcutta

### JUNE 3 - SEPTEMBER 15

WCRC Summer Singles League

### JUNE 7-9

Club Championships  
Mixed Doubles

### AUGUST 10-11 & 17-18

Club Championships  
Singles & Doubles

### SEPTEMBER 27-30

WCRC Summer Singles  
League Tournament

### NOVEMBER 16

Turkey Tournament

*The club's purpose is to promote the game of tennis in Walnut Creek by providing a wide variety of activities (tournaments, league play, clinics and social events) for enthusiasts of all ages and skill levels.*

## Little Siebel Produces Big Winners

Concord's Judy Griffith teamed with Orinda's Jesse Inlan to capture the 8.0 Mixed division at the WCRC's 2nd Annual Little Siebel Tournament, held January 12. Griffith and Inlan went undefeated in round-robin pool play before beating the husband and wife tandem of Jane and Eric Ladrech in the final 8-3. Stephanie Law and John Gavello won four consecutive matches, including a 8-5 victory over Darcy Lopes and Ron Rose to capture the 7.0 division while Robert and Meredith Young claimed the 6.0 title with a 8-6 nailbiter against Pauline Hanley and Dale Crabtree.

All winners and finalists received lower reserved sideline tickets to early round matches at the Siebel Open in late February. Proceeds from the event will go toward offsetting some of the cost for the club's Siebel Open bus trip slated for Friday, March 1. Thanks to Kent Lindeman (tournament director), Robert Young and Shari Huber for their work in putting together the event.



Jesse Inlan and Judy Griffith



John Gavello and Stephanie Law



Meredith and Robert Young



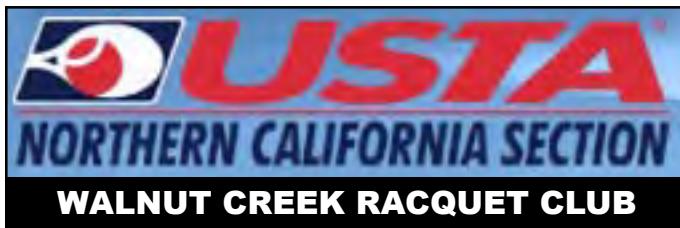
### *Tickets for Siebel Trip Still Available*

A limited number of tickets are still available for the WCRC's bus trip to the Siebel Open quarterfinals on Friday, March 1. Buses will leave the Walnut Creek Tennis Center at 5:30 pm on Friday and return at the conclusion of evening session play. Tickets are \$57 per person, which include Lower Reserved Sideline seats, roundtrip transportation as well as food and beverages during the trip to San Jose.

To reserve your tickets, please make a check out to "WCRC" and send to: Kent Lindeman, 1889 Appia Court, Walnut Creek, CA 94598. If you have any questions, please contact Kent at 943-5745 or via email at [jkindeman@earthlink.net](mailto:jkindeman@earthlink.net).

### *Have you paid your 2002 WCRC dues?*

Not sure whether you have renewed your WCRC membership for the 2002 year? Take a moment to look at your check register since early November if you are not sure if you remitted dues. If not, send a \$15 (WC resident) or \$20 check (Non WC resident) to: WCRC, P.O. Box 4574, Walnut Creek, CA 94596. Please contact Judy Stillman, WCRC Membership Chair at 933-9351 or via email at [jstillma@pacbell.net](mailto:jstillma@pacbell.net) if you have any questions.



## MIXED 7.0 TEAM LEADS DIABLO NORTH PACK

With two matches left until playoffs, the WCRC Mixed 7.0 team Ñ led by captains Terri Hernandez and Bret Jones Ñ have locked up the top seed and home court advantage for Local Playoffs. Despite an upset loss to Pinole Park, the team was 11-1 as of January 20, with matches against Meadow (2-9) and Oakhurst (7-5) remaining. A win against Oakhurst during the final week of the season is likely to knock the Clayton-based club out of the playoffs and set up



7.0 captains Jones (L) and Hernandez

the WCRC to play their Pleasant Hill counterparts in the first round.

According to Jones, the successful results have been Ótotal team effort.Ó He points to the following pairs who have pulled out third set wins to secure a 2-1 team win - Francis Crusit & Terri Hernandez vs. Big C (7-5 third set); Long Nguyen & Patti May vs. Moraga (6-4); Bob Grove & Terri Hernandez vs. Pleasant Hill (7-5) and Darcy Lopes & Bret Jones vs. Round Hill (7-5).

**SINGLES PLAYERS NEEDED!**  
**3.5 USTA Men's Adult Team needs**  
**strong 3.5 players**  
**especially singles players**  
**Contact Gerry Brown 510-297-7881**  
**g\_rbrown@pacbell.net**

## NTRP TOURNAMENTS

### FIELDS TOP NORCAL 4.5 PLAYER

Armed with a strong baseline game and his trademark long-sleeved T-shirts, Bay Point's Ryan Fields ended 2001 as the top ranked Men's 4.5 player in Northern California. Fields posted a 15-1 match record and won three of the four



tournaments he entered, including the Walnut Creek Spring Fling, Walnut Festival and Lakeridge tournament. His tournament success combined with his 8-1 record playing #1 Singles on Frank Jones' Walnut Creek 4.5B team this past summer earned him an automatic ticket to 5.0 for 2002.

Fields will be aiming to knock off three WCRC members who ended the season ranked in the Top 20 in the Men's 5.0 division - Shane Jones (#4), Martin Dunlap (#10) and Chris Lewis (#16).

Other ranked players include:

Men's 3.0 Singles	#5 - Shawn Barker
Men's 3.5 Singles	#4 - Diego Melchert #18 - Brad Belton
Men's 4.0 Singles	#14 - Dimitar Zaprianov
Women's 3.5 Singles	#5 - Heidi Belton #21 - Debra Teryison
Women's 4.0 Singles	#6 - Eileen Ko
Women's 4.5 Singles	#3 - Arlene Acosta #14 - Susan Sharpe
Women's 3.0 Doubles	#2 - Patti May & Darcy Lopes
Women's 4.5 Doubles	#2 - Arlene Acosta & Phyllis Storrs
Mixed 3.5 Doubles	#1 - Brad & Heidi Belton #3 - Angie De Leon & Larry Long
Mixed 4.0 Doubles	#8 - Eileen Ko & Dimitar Zaprianov

# New WCRC website unveiled



The WCRC website -- www.wcrc.net -- has a new look for 2002! Publicity/Website chair Shari Huber has retooled the graphics, navigation and content of the site to increase the information available to members 24 hours a day. The site includes: USTA League Updates, a 2002 Tournament Schedule and Event Calendar, Summer Singles and Winter Doubles League On-line Scoring, News and Photo Archives. Check it out!



Thanks to all members who helped the WCRC raise \$2,923 during the Annual Silent Auction held January 19 at the Heather Farm Community Center. A large portion of this amount will be donated to the Northgate High School Boys and Girls varsity teams. The WCRC would like to give special thanks to the following auction donors:

- Alice & Kaz Adachi
- John Bondon
- Judith Cohen
- Frank & Marilyn Concepcion
- Jim Farber - Walnut Creek Tennis Center
- Patrick Farrell - Back Care PT & Rehab
- Gary & Nancy Gates
- Gabriel Goldstein, EA
- David Graham
- Dick Harrow - Harrow Enterprises
- Debbie & Peter Hellmann
- Shari Huber
- Linda Hurd - Alamo Lighting
- Myrl Kan & Leonard Young
- Janet & Kent Lindeman
- Mark Lyons - Tennis Express
- Chris & Irv Pearlstein
- Allan Richardi
- Liz Riddle & Al Johns
- John Rushworth - Prince
- Nick Scriabine - Pan Pacific San Francisco
- Derek Shendell
- Roman Teper - Krama Construction
- Walnut Creek Printing Company
- Joan Yao
- Robert & Meredith Young

## NEWS AND NOTES

### PLAYERS NEEDED FOR WOMEN'S 2.5 TEAM

Are you a 2.5 player? Do you know someone just starting out playing tennis? The WCRC is looking to add a USTA Women's 2.5 team this summer to further our club's purpose of promoting the game of tennis in the area. At the 2.5 level, the format consists of one singles match and two doubles matches. We will need a captain and at least nine players to field a team. Please contact Jennifer Scriabine 939-4328 or scriabine@mindspring.com if you are interested.

**uspta** **USRSA**  
Certified Stringer

**East Bay's most experienced and first certified stringer**

**Fastest turn-around time -- I'll string while you wait!**

**Highest quality work**

**When the others can't get it done, I'll get you back on the court within an hour.**

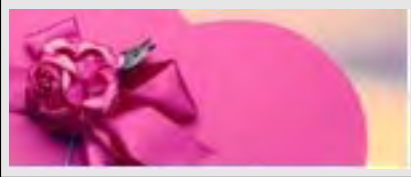
**LEE DRAISIN**  
(925) 229-3380  
kayleemtz@webtv.net

**\$10 OFF**  
**Racquet Stringing**

One racquet only. Limited to first-time customers. May not be combined with other offers.

**LOCATION**  
Less than 1 mile from 680/4 interchange in Martinez

*Find a sweetheart and enter the 2002*



# VALENTINE'S DAY TOURNAMENT

Saturday, February 16

**WHERE:** Walnut Creek Tennis Center  
**COST:** \$20 per team - sign up with a partner  
**DEADLINE:** February 9  
**START:** Times posted at WCTC on Wednesday, February 13 after 4:00 pm.  
**FORMAT:** Winner of each flight will be the pair who win the most games combined with the games won by their "secret lovers" in another flight. Results will be announced at the end of the event. Food and drink will be provided.  
**ENTRIES:** Complete form at right, make check payable to WCRC and send to:  
**Josh Svendsen**  
**3606 Bickerstaff Street, Apt. C**  
**Lafayette, CA 94549**  
**QUESTIONS:** Call Josh at 962-1782 or email to [joshsvendsen@attbi.com](mailto:joshsvendsen@attbi.com)

### PLAYER 1

Name \_\_\_\_\_  
 Address \_\_\_\_\_  
 City/Zip \_\_\_\_\_  
 Phone \_\_\_\_\_  
 Email \_\_\_\_\_  
 Rating \_\_\_\_\_

### PLAYER 2

Name \_\_\_\_\_  
 Address \_\_\_\_\_  
 City/Zip \_\_\_\_\_  
 Phone \_\_\_\_\_  
 Email \_\_\_\_\_  
 Rating \_\_\_\_\_

## President's Message

*continued from page 1*

in 2001, and this year the seats are even better. Dinner is served en route, and best of all, you don't need to worry about driving or parking - the bus drops us off outside the Compaq Center and is waiting to take us back to the Tennis Center when the matches are over.

I just checked the USTA NorCal website - presently, there are 17 WCRC Adult, Senior and SuperSenior USTA teams competing with 10 in the top 5, including 4 in first place in their respective divisions. Like I have always heard, if you want competitive tennis, play at Heather Farms.



*Judy Stillman and Alan Mould display a few moves at the Annual Banquet & Silent Auction*

The 2002 Winter Doubles League is well on its way to having another record year for participants and matches played. Hopefully, unlike last year, we won't have to deal with the additional scheduling problems of showing up to play a match in the evening and finding a sign telling us the lights are off because of a lack of power. To all participants: Good luck and have fun. -RY



**New Member  
Information  
Removed for  
Privacy**

BULK RATE  
U.S. POSTAGE  
**PAID**  
Walnut Creek, CA  
Permit No. 432

WCRC  
P.O. Box 4574  
Walnut Creek, CA 94596  
www.wcrc.net



## ***NTRP TOURNAMENT SCHEDULE***

### **February 24-25, March 3-4**

SLUG TENNIS CHAMPIONSHIPS - SANTA CRUZ  
4.5, 5.5ÑMS, MD, WS, WD  
Entry fee: Singles-\$29.00, Doubles-\$32.00/team  
ENTRIES OPEN: January 22 - CLOSE: Feb 12  
TOUCH TONE/TENNIS LINK#50107

### **February 24-25, March 3-4**

MONTEREY WINTER NTRP CLASSIC  
3.0, 3.5, 4.0, 5.0ÑMS, MD, WS, WD, MXD  
Entry fee: Singles-\$25.00, Doubles-\$30.00/team  
ENTRIES OPEN: January 22 - CLOSE: Feb 12  
TOUCH TONE/TENNISLINK #50108

### **\*\*4.0 TOURNAMENT OF THE YEAR\*\***

#### **March 9-11, 17-18**

CLUBSPORT PLEASANTON NTRP  
5.0ÑMS, MD; 4.5ÑMS, MD, WS, WD, MXD  
4.0ÑMS, MD, WS, WD, MXD  
3.5ÑMS, MD, WS, WD, MXD  
Entry fee: Singles-\$30.00, Doubles-\$40.00/team  
ENTRIES OPEN: February 5 - CLOSE: Feb. 26  
TOUCH TONE/TENNISLINK #50109

### **\*\*5.5 TOURNAMENT OF THE YEAR\*\***

#### **March 24-25, 31-April 1**

WALNUT CREEK NTRP SPRING FLING  
TOY 5.5ÑMS, MD, WS, WD, MXD  
4.5ÑMS, MD, WS, WD, MXD  
3.5ÑMS, MD, WS, WD, MXD  
Entry fee: Singles-\$25.00, Doubles-\$32.00/team  
ENTRIES OPEN: Feb. 19 - CLOSE: March 12.  
TOUCH TONE/TENNISLINK #50112