



THE COURT REPORTER

Newsletter of the Walnut Creek Racquet Club

July 2009



Mike Saputo keeps an eye on his target before unloading on his driving backhand.

Photo by: Robert Young

Walnut Creek Racquet Club

P.O. Box 4574 • Walnut Creek, CA 94596
(925) 945-0105 • www.wcrc.net

OFFICERS

President	Tammie Snyder 957-0604 tammie@gte.net
Vice President	Maria Chiang 521-1788 juanachiang@yahoo.com
Secretary	Postion Open
Treasurer	Hilde Chan 228-4783 luf2play@aol.com

ACTIVITY CHAIRPERSONS

Mailing	Janet Neilsen 837-8664 janneilsen@juno.com
Membership	Pege Amann 934-5128 pegek@yahoo.com
Newsletter	Tammie Snyder 957-0604 tammie@gte.net
Website Doubles League	Shari Gonzalez 691-9196 webmaster@wcrc.net
Tournaments	Tammy Chan 324-0524 tchanderson@gmail.com
Leagues (Non-USTA)	Deanna Fong 952-9935 deanna_fong@yahoo.com Susie Dunlap 228-1641 susied98@aol.com
USTA Leagues	Bret Jones 890-1416 bretjones@comcast.net
Day & Mixed Leagues/Publicity	Pam Maloney 787-3970 pam4tennis@hotmail.com
City of Walnut Creek Liason	Don Loeffler 330-1605 donloeff@pacbell.net
New Member Liason	Nancy LeSage 937-9802 nlesage@astound.net
Marketing	Lynne Weinshelbaum 285-9503 lweinshelbaum@yahoo.com

THE PRESIDENT'S REPORT



Tammie Snyder
2009 WCRC President

The **Mid-Summer Night Tournament** is coming up **August 1st** this is a social tournament that is team tennis doubles format. To sign up go on line at wcrc.net or fill out the registration form on page 3.

Also check out our 2nd Annual **Mixed Doubles League** which begins **September 1st**. You can sign up on line or by filling out the registration form found on page 6.

Congratulations to **Mary Waltz's** 3.0 Senior Women team they are now heading to NATIONALS in October in Tuscon, Arizona...Good luck bring home the win!!!

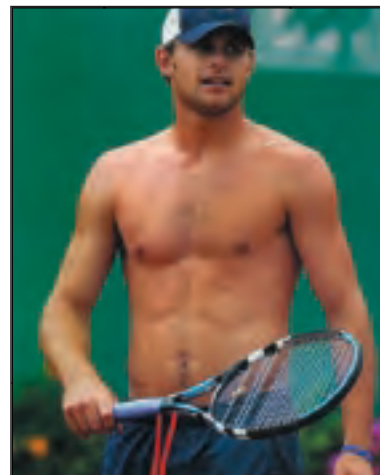
The Adult and Super Senior leagues are just finishing up their seasons. Once again WCRC has quite a few teams vying for a playoffs spot. Congratulations and good luck to the following teams: **Michael Brennan's** 3.0M; **Gerry Brown's** 3.5 M; **Tammie Snyder's** 3.5M; **Marc Zimmank's** 4.0M, **Bret Jones'** 4.0M; **Mike Willis'** 4.5M; **Myrl Kan's** 2.5W; **Kathleen Holland's** 3.5W; **Laurie Lenhart's** 3.5 W; **Carolyn Spady's** 3.5W; **Jane Ladrech's** 4.0W; and **Marianne Dundon's** 4.5W.

Summer Singles league is now underway with lots of players hitting the courts to play some tennis. Check out the leader board found on page 5 of this newsletter. If you signed up for summer singles but are unable to play, please contact **Deanna Fong** as we do have a waiting list for players looking to play.

For those of you who saw history in the making Roger Federer has now become the most winning grand slam tennis player, beating Andy Roddick in a very exciting Wimbledon final (5-7, 7-6(6), 7-6(5), 3-6, 16-14). I was rooting of course for Andy and he played amazing tennis. I for one, think he is back!

See you all on the courts...

Tammie





Mid-Summer Night Tennis

Date: Saturday, August 1st

Time: 6:00 pm

Place: Heather Farms

Cost: \$12.00/person

Format: Team Tennis Doubles



Name: _____

Phone: _____

Email: _____

USTA Rating: _____



Please make checks payable to: WCRC and mail to:
WCRC • 1024 Julie Court • Concord, CA 94518

Questions? Please contact Shari Gonzalez at 925-691-9196
or at shari.gonzo@gmail.com

or sign up on line at wcrc.net



Tennis News



Success!

by Myrl Kan

The awning project is completed. Courts 1-3 and 6-7 are now equipped with awnings to provide some shade for those warm, sunny days.

Much kudos to our returning crew - **Jesse Gonzalez, Gerry Brown, Justin Snyder** and **Garvin Tom**. Thanks guys for stepping up and doing your share - **Tim Tamura, Steve Matsushino, Brian Kuritsubo, Alan** and **Logan Chan**, and **Woody**. Both units were installed in a record time of 1.5 hours! Enjoy!



2nd Annual Tennis Invitational!

The 2nd Annual Tennis Invitational-Community vs. High School Boys and Girls tennis teams saw another Walnut Creek Racquet Club participant, **Gerry Brown** as the overall winner from the Community of Walnut Creek. Boys' Captain **Jasneet Hora** accumulated the most amount of games won by a Las Lomas High School participant. Principal Lickiss and **Coach Larsen** appreciate the continued support to this annual fundraiser held in May at Las Lomas High School.



Left to right: Gerry Brown, Principal Lickiss, Jasneet Hora and LLHS Tennis Coach Larsen

Looking for Players for BALL Senior C Team 2009-10

by Lou Ruwe



BALL season runs from September through April with matches once a month. Most of the matches are on Monday mornings and our practices will probably be on Mondays. You must be 50 or older to play on a Senior team. If

interested in joining our team in the fall, please contact **Lou Ruwe** @ 925-229-0162 (dandlruwe@comcast.net) or **Barbara Reamy** @ 925-932-1827 (rreamy@aol.com) for more information.



**New Member
Information
Removed for
Privacy**

WCRC Fall Mixed Doubles League Registration Form (Also on-line at www.wcrc.net)

MALE PLAYER

FEMALE PLAYER

Name	_____	_____
Mailing Address	_____	_____
City	_____	_____
ZIP Code	_____	_____
Home Phone	_____	_____
Work or Cell Phone	_____	_____
E-mail address	_____	_____
NTRP level	_____	_____

WCRC Member? ☐ YES ☐ NO

☐ YES ☐ NO

Division for which you are registering (please check one):

☐ Mixed 6.0

☐ Mixed 7.0

☐ Mixed 8.0

☐ Mixed 9.0

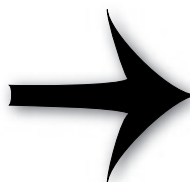


On-Line Registration will remain open until **August 28, 2009**. If you would like to register by mail, return this form by **August 21, 2009** with a check for registration fees (payable to WCRC) to: WCRC, 970 Janet Lane, Lafayette, CA 94549.

Questions?

Call Pam Maloney at 925-787-3970
or via e-mail pam4tennis@hotmail.com

Find detailed Information on page 7...



League Information: Players may enter the WCRC Mixed Doubles League in more than one division (i.e, 6.0 and 7.0), as long as he/she is not playing below his/her level. If a player is entering in more than one division, he/she may enter with the same partner or a different partner but may not enter with different partners at the same level.

Once League play is complete and registration for the end-of-League Tournament begins, a player may enter the Tournament at more than one level. However, if scheduling problems arise the Tournament Director will require the player with a conflict to forfeit the division of his/her choice. **No exceptions will be made for match rescheduling if this situation arises.**

WCRC Fall Mixed Doubles League

Registration Form (Also on-line at www.wcrc.net)

We will continue to offer on-line scoring and real-time updated standings for all four (4) divisions. Don't forget that the league registration fee includes 12 regular season doubles matches, a league gift and may include an end of the season tournament dependent upon weather and court scheduling.

LEAGUE COMMISSIONER

Pam Maloney 925-787-3970

DATES

August 31, 2009 – January 3, 2010

ENTRY FEES

WCRC Members

On-Line Registration: \$15 (\$30 per team)

Mail In Registration: \$20 (\$40 per team)

Non WCRC Members

On-Line Registration: \$25 (\$50 per team)

Mail In Registration: \$30 (\$60 per team)

FORMAT

Mixed Doubles, 16-week regular season
(players grouped by combined NTRP level; ie. 7.0 can be a 4.0 man and a 3.0 woman or two 3.5 players)

NTRP LEVELS

Mixed 6.0-9.0

SCHEDULING

Up to twelve (12) matches are provided for each team to complete during the 16-week season. Schedules will be posted on the Walnut Creek Racquet Club website during the last week of August and an informational email will be sent to all players. Players are responsible for scheduling their own matches at any site that is mutually agreeable between opponents.

MATCH FORMAT

Best two-out-of-three set format, 12-point tiebreaker (regular scoring). No SUPERTIEBREAKERS! Both teams responsible for bringing balls to match; winning team gets unopened can. Matches should be played according to the "Rules of Tennis."

TOURNAMENT

End of season tournament with draw determined by the league standings to be held over a weekend (tentatively scheduled for **January 8-10, 2010** dependent upon court scheduling and weather). To qualify for the tournament, teams must have completed and reported at least 4 matches during the regular league season. Depending on the number of entrants tournament play may include Friday night play. In addition, draws with large numbers of players may be required to play matches prior to the tournament weekend. Seeding for the tournament will be based on regular season standings. The more matches you and your partner play, the higher your ranking will be.



From the Pro...

Questions and Answers

QUESTION: Can someone offer advice on hitting back a ball with heavy, heavy top spin.
Specifically:

1. Hitting a volley back from a ball with heavy topspin.
2. Hitting an overhead off a short, heavy topspin lob.
3. Hitting a groundstroke back from a heavy topspin groundstroke.



My returns tend to flub off my racquet. Am I not following through enough?
Or stroking firmly enough? Or what? Help!

ANSWER: There are two major adjustments a player must make in order to handle a heavy topspin shot. The first (the most obvious) is read the spin on the ball. The second is (the most overlooked) repositioning for the flight pattern. Heavy topspin shots will tend to climb and drop very quickly. The traditional hitting with a square face won't be as successful in this situation. Here are my suggestions for handling heavy topspin:

- Volleys – With a rapid dipping ball approaching, close the net and open the racquet for slicing. Slicing will not only assist your volley over the net but also give your heavy top-spinner a tough low ball.
- Overheads – On short, heavy topspin lobs, always plan to attack the ball on the rise. Heavy topspin lobs can get behind you faster than you think. Try hitting an overhead prior to the bounce; meet the ball with the face slightly open.
- Groundstrokes – Racquet prep is key. A shortstop in baseball always has the glove down since he expects a lot of ground balls. The same approach should be used in groundstrokes and serve returns. But hold your racquet high to better address the high balls. Your shot will be similar to a high volley but with a bounce.

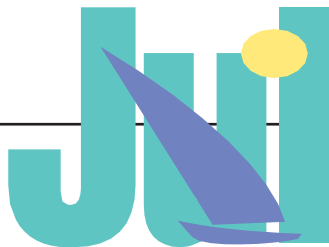
Playing a heavy top-spinner can be very frustrating for a lot of players.

Just remember the best way to perform a job correctly is use the right tool.
Think about that the next time you try to hammer a screw in.



Leonard Young is a long time WCRC member and a private teaching pro. He is currently the tennis specialist at Sports Chalet in Concord. If you have a question you would like to submit, please send them directly to Leonard Young at virtualpro@webtv.net.

CALENDER OF EVENTS



July 6	USTA Combo Team Season Opens
July 12	USTA Adult League Season Closes
July 12	USTA Super Senior 65 Season Closes
July 13	USTA Fifty Mixed Season Opens
July 17-19	USTA Adult League Playoffs Round 1
July 20-22	USTA Super Senior 65 Playoffs Round 1
July 24-26	USTA Adult League Playoffs Round 2
July 27-29	USTA Super Senior 65 Playoffs Round 2



Aug. 1	Mid-Summer Madness Tournament
Aug. 7-9	USTA Adult League Districts
Aug. 14-16	USTA Adult League Districts
Aug. 28-31	USTA Adult League Sectionals



Sept. 20	USTA Super Senior 60 Season Closes
Sept. 21-23	USTA Super Senior 65 Sectionals

TREASURER'S REPORT

Hilde Chan

as of April 30, 2009



Walnut Creek Racquet Club Profit & Loss January through April 2009

	Jan - Apr 09
Income	
Winter Doubles 09	8,240.00
Interest Income	21.76
Advertising Income	540.00
Membership Dues	7,445.00
Board Dinner	182.00
Calcutta Tournament	0.21
Total Income	16,428.97
Expense	
Court Repairs & Equipment	1,500.00
Winter Doubles '09	1,303.92
Awards Dinner 2009	1,709.00
Mixed Doubles League '08/'09	2,399.91
Board Meeting Expense	275.18
Paypal Fees	393.48
Bank Service Charge	10.87
Newsletters-Court Reporter	312.13
Postage	122.06
Supplies	385.34
Website	1,607.73
Board Dinner Expenses	906.92
Total Expense	10,926.54
Net Income	5,502.43

Balance April 30, 2009

\$33,160..32

Great bang for your buck!!!

For as little as \$40/month you can
reach over 800 readers!



Deadline for the August issue is
Friday, July 24th.



WCRC
P.O. Box 4574
Walnut Creek, CA 94596
www.wcrc.net

PRESORTED
STANDARD
U.S. POSTAGE
PAID
Walnut Creek, CA
Permit No. 432



Senior Women 3.0 Team Heading to Nationals

WCRC President Tammie Snyder (right) presents Sam Vanecek, Leslie Finertie and Senior 3.0 Women's Captain, Mary Waltz a \$500 stipend check to help offset costs at Nationals.