



THE COURT REPORTER

Newsletter of the Walnut Creek Racquet Club

February, 2011



Steve Mehlman keeps his eye on his opponent as he gets ready to fire in a serve.

photo by: Robert Young

Walnut Creek Racquet Club

P.O. Box 4574 • Walnut Creek, CA 94596
(925) 945-0105 • www.wcrc.net

2011
Board

OFFICERS

President	Sterling Fairholm 595-3576 sterling@fairholminsurance.com
Vice President	Position Open
Secretary	Deanna Fong 952-9935 deanna_fong@yahoo.com
Treasurer	Cory Carr 324-8886 cory.carr@colliers.com

ACTIVITY CHAIRPERSONS

Mailing	Janet Neilsen 837-8664 janneilsen@juno.com
Membership/ Court Facilities	Tim Tamura 228-3962 timbotam@att.net
Newsletter	Tammie Snyder 957-0604 tammie@gte.net
Website	Shari Gonzalez 691-9196 webmaster@wcrc.net
Tournaments	Tammy Chan 324-0524 tchanderson@gmail.com
Leagues (Non-USTA)	Susie Dunlap 228-1641 susied98@aol.com
USTA Leagues	Bret Jones 890-1416 bretjones@comcast.net
Day & Mixed Leagues/Publicity	Pam Maloney 787-3970 pam4tenis@gmail.com
New Member Liason	Nancy LeSage 937-9802 nlesage@astound.net
Marketing/ Doubles League	Lynne Weinshelbaum 285-9503 lweinshelbaum@yahoo.com
Summer Singles	Cameron Coltharp 510-717-2107 ccoltharp@telecarecorp.com

THE PRESIDENT'S REPORT



Sterling Fairholm
2011 WCRC President

Congratulations to our very own **Marianne Dundon** on getting Captain Of The Year for Diablo North 2010. Anyone who has been on one of her teams knows that it is well deserved. It's nice to see one of the many excellent WCRC captains getting some recognition. If you see her around be sure to congratulate her I'm sure she will hate it.

The senior season is winding down with a few of our teams locking down a playoff spot, good luck moving forward and lets hope for more dry tennis weather. Mixed season is just a few weeks old but Adult league sign-ups have already started, we already have 13 teams signed up out of Walnut Creek. All you captains be sure to get your team registered as February 13th is the last day to add your team.

On a sadder note our thoughts go out to a long time WCRC member **Christie "Ernie" Scrimshaw** who recently suffered from a stroke at her home. Fortunately her daughter was home at the time, she is currently in the hospital unconscious but in stable condition.

Keeping with tradition I would like to announce the new WCRC newsletter poster girl **Miss Maria Kirilenko**. She may not be #1 in the world but she is worthy of the front page.

See you on the courts!

Sterling





**New Member
Information
Removed for
Privacy**

MIXED DOUBLES TOURNAMENT RESULTS AND PHOTOS



The 2010 Mixed Doubles League came to a close with a great tournament the week-end of January 7-9. We got lucky with the weather this year and except for the early morning were able to keep the tournament pretty much on schedule. A great big thanks to Bob Walgren for running the tournament and to everyone who pitched in to help. I can't name everyone because I'm sure I'd leave someone out. Take a look at the great photos and you'll see what a good time we had!

Thanks to all 200+ of you who played with us this year. We look forward to seeing you again in 2011!

Pam Maloney & Shari Gonzalez



Rhonda Miller and Glenn McBee
defeated Maureen Satcher and Kevin Schlangen
4-6, 7-6 (9), 7-6 (5)



Sheryl Lawrentz and Salvador Labrador
defeated Maria Chiang and Charlie Scudiere
7-5, 6-4



Michelle McDonagh and Debashis Panda
defeated Heidi Belton and Garvin Tom
6-3, 7-5



Marianne Dundon and Sterling Fairholm
defeated Alison Vidal and Carlos Manuel
5-7, 6-3, 6-3



Tennis News



Walnut Creek Women's 5.5 Combo team head to Sectionals

By Rhonda Miller

The Walnut Creek Women's 5.5 Combo team head to Sectionals Feb. 4th – 6th. This is very exciting for many of our players who have never experienced the thrill of competition well into post season play.

The team ended the season 8-2, which put us in third place during the playoffs against Diamond Hills. During the regular season, Diamond Hills was our first match, against tough competitors where we lost all three lines. However, during the playoffs, the WC Women's 5.5 Team swept all three lines, all in straight sets- advancing our team to Districts, while eliminating Diamond Hills. Sweet Revenge!

At Districts, we won Friday's opening match 2-1. Saturday we faced rain delays and waited for hours, literally watching the courts dry. We finally got the call to play in an 8 game, no-ad pro set. Pretty tough, when our team's strength has been endurance, and the ability to rally in the second and third sets. Without much of a warm up, our ladies brought their "A" game and beat Livermore in a very close match. Even though we advanced to Sectionals by winning both of our first two matches, we decided to play Sunday's match just for the practice. Copper River had the home court advantage and the ability to warm up on their own courts, (what????) while our team waited for our assigned court time. They ended up beating us 1-2 on Sunday, but we will see them again at Sectionals and we'll be ready for them. They won't know what hit them.

We have succeeded this far with a team effort from everyone including: Sharon Carver, Gretchen Caulfield, Irina Chase, Teresa Choi, Becky Dixon, Diane Eck, Miwa Hashimoto, Tammy Hensley, Aparna Kamath, Cheri Kirschenheuter, Florita Labrador, Sheryl Lawrentz, Kristin Lunghi, Captain Rhonda Miller, Cindy Moe, Colleen O'Brien, Wendy Reiser, Co-Captain Moe Satcher, Leah Schlangen, Femy Semilla and Cheryl Walsh.

Go Creek!

Walnut Creek "B" Combo 8.5 Team Headed to Sectionals! Gold River, CA

By Arlene Acosta

This year's Sectionals will take place at Gold River Racquet Club, February 4th, 5th and 6th in Gold River, CA. near Sacramento off Highway 50.

The Walnut Creek "B" Team garnered honors by downing an extremely formidable Sunnyvale Team and neighboring, Napa Valley T.C. Though rain fell, a swift acting USTA committee stood steadfast and were able to convince Captains that the "show must go on!" As a result, most matches were played & only a few teams had to finish else where.

Up next for the Walnut Creek "B" Combo 8.5 Team is Sectionals and will be playing the following teams: Golden Gateway of San Francisco, Napa Valley T.C. and Gold River R.C. Hopefully, good weather will prevail and all matches will be played as scheduled. Wish us well! On to Sectionals!!



Walnut Creek 8.5 Team Prevails at Districts!

Pictured from left to right: Co-Cap: Lynne Weinshelbaum, Captain: Arlene Acosta, Tammy Chan-Anderson, Mary Trueblood-Miller, Trice Rainer, Lisa Snowden, Christine Hohenstein, Thea Horii.

WCRC Men's & Women's 2011 Winter Doubles League Registration Form (Also on-line at www.wcrc.net)

PLAYER 1

PLAYER 2

Name _____

Mailing Address _____

City _____

ZIP Code _____

Home Phone _____

Work or Cell Phone _____

E-mail address _____

NTRP level _____

WCRC Member? ☐ YES ☐ NO

☐ YES ☐ NO

Division for which you are registering (please check one): NTRP (check one)

- ☐ Men's 3.0
- ☐ Men's 3.5
- ☐ Men's 4.0
- ☐ Men's 4.5
- ☐ Men's 5.0/5.5

- ☐ Women's 2.5
- ☐ Women's 3.0
- ☐ Women's 3.5
- ☐ Women's 4.0
- ☐ Women's 4.5/5.0

Registration Fees (note - if you are interested in joining the Racquet Club, please download a membership form from <http://www.wcrc.net/about/membership.htm> and return it with this application):

- * \$45 per team (both Walnut Creek Racquet Club Members) • \$35 per team for on-line registration
- * \$55 per team (one WCRC Member, one non-member) • \$45 per team for on-line registration
- * \$65 per team (both non WCRC members) • \$55 per team for on-line registration

On-Line Registration will remain open until **February 1, 2011**. If you would like to register by mail, return this form by **January 25th, 2011** with a check for registration fees (payable to WCRC) to: WCRC, 25 Binnacle Hill, Oakland, CA 94618.

Questions? Call Lynne Weinshelbaum at 510-665-4025 or via e-mail lweinshelbaum@yahoo.com

League Information: Players may enter the WCRC Winter Doubles League in more than one division (i.e. 3.0 and 3.5), as long as he/she is not playing below his/her level. If a player is entering in more than one division, he/she may enter with the same partner or a different partner but may not enter with different partners at the same level.

Once League play is complete and registration for the end-of-League Tournament begins, a player may enter the Tournament at more than one level. However, if scheduling problems arise the Tournament Director will require the player with a conflict to forfeit the division of his/her choice. **No exceptions will be made for match rescheduling if this situation arises.**

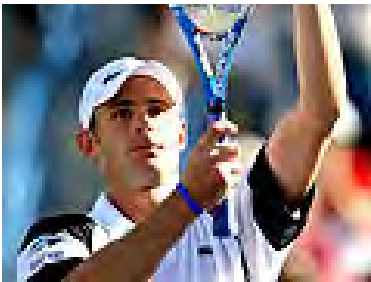
JR Tennis Tours

Pacific Life Open at Indian Wells

March 11-14, 2011

(hurry only 5 rooms left!)

The Pacific Life Open at Indian Wells, with the world's best men and women pros competing, is arguably one of the toughest tennis tournaments in the world. It is a "must-see" for the true tennis enthusiast. Watching three sessions, you might even get to meet a tennis super star like Roger Federer or Maria Sharapova. When you're not watching tennis, you can enjoy the camaraderie at the resort during happy hour or on the resort tennis courts. Come join us for this very special 4-day/3-night tennis trip!



About your host:

Tour director Jim Rakela is an experienced player and travel professional. Jim was a collegiate All American, and a top 15 nationally ranked player in the 30's, 35's, 40's and 45's. He has traveled to over 25 countries and has hosted tennis tours in Mexico, Hawaii, Croatia and created custom tours for Davis Cup, Indian Wells & the US Open events.

Your package includes:

- Tickets for 3 day sessions (Fri- Sun or Sat - Mon) at the Pacific Life Open
- Shared use of our personal box seats
- Optional discounted tickets available for other day & evening sessions
- 3 nights accommodations at the Indian Wells Resort
- Complimentary breakfast & happy hour
- Complimentary shuttle service between hotel and Pacific Life Open
- Resort fee, taxes and use of tennis courts
- Great camaraderie, "insider" tennis tips and more....

Pricing details: Luxury Hotel Room Luxury Suite (600 sq ft with fold-out sofa)

- | | | |
|--------------------|----------|----------|
| • Dbl Occupancy | \$475 pp | \$550 pp |
| • Triple Occupancy | \$375 pp | \$425 pp |
| • Quad Occupancy | \$325 pp | \$360 pp |

Air & rental car are not included; we suggest flying into Ontario & renting a car there.

Space is limited. For special itinerary considerations or other questions, contact Jim Rakela at JRtennistours@yahoo.com or call (925) 997-7502.



Lifetime Tennis



Bryce Knackstedt

Bryce has been at Heather since Lifetime took over and now we know his last name. It's German and he says you pronounce every letter.

Bryce grew up in Brentwood, now lives in Walnut Creek and is becoming more active with WCRC.

He's been playing in the USTA and WCRC leagues including: Men's Combo, Summer Singles and the Mixed League.

In his spare time he's teaching all levels when Mary Pat doesn't have him doing a zillion other things he's so capable of. Bryce has been with Lifetime since 2008 and has recently been promoted to office manager for the Walnut Creek office.

New Policy

Beginning Jan 1, 2011 the City of Walnut Creek has adopted a new Use Policy for Walnut Creek Tennis Facilities in which everyone involved in an advanced reservation (ie. USTA match) at any of the "home courts" including: Heather Farm, Rudgear and Northgate High School must pay a fee. This may be paid via day fee, 4 month pass or annual pass.

Passes may be paid in the office at Heather Farm or you may make arrangements to pay online. This would be done by you by requesting and creating an online account at http://activenet14.active.com/lifetimetennis/servlet/registrationmain.sdi?online_site_id=3

Free Private Lesson

Lifetime Tennis is giving a free private lesson with Roy to all new racket club members that sign up through the month of March 2011. You are welcome to contact the office and we will get you scheduled or Lifetime Tennis will be contacting you thru email.

Lifetime Tennis is retroactively going back to all new members from Oct 2010 on and will be contacting them to let them know.

Second Annual Lifetime Tennis Open House

Date changed to Sat., March 12th, 1-4 pm

Drawings for prizes will be held with a special Grand Prize.

- Hit for Prizes
- Deal of Year Specials
- Indian Wells Challenge
- Snacks and Giveaways
- Improvements for 2011

Winter Specials

-Private Lesson Special 3 lessons for \$99
offer good through March 2011

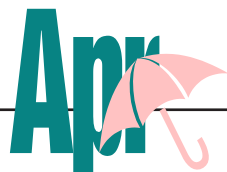
-Free ball machine time slot
for every racket we string
thru March 2011



CALENDER OF EVENTS



Mar. 4-6 USTA Senior Playoffs Round 1
Mar. 18-20 USTA Senior Playoffs Round 2



Apr. 8-10 USTA Senior Districts
Apr. 29 Calcutta Party
Apr. 30 Calcutta Tournament



May 6-8 USTA Mixed Playoffs Round 1
May 9 WCRC Winter Doubles Ends
May 13-15 USTA Mixed Playoffs Round 2
May 14-15^h WCRC Winter Doubles Tournament
May 20-22 USTA Mixed Districts
May 30 WCRC Summer Singles Begin



June 4-5 USTA Mixed Sectionals

TREASURER'S REPORT

Cory Carr

as of December 31, 2010



Walnut Creek Racquet Club Profit & Loss January through December 2010

	Jan - Dec 10
Income	
Advertising Income	750.00
Calcutta Tournament	2,871.00
Interest Income	46.05
Membership Dues	16,050.00
Midsummer Tournament	180.00
Mixed Dbls. League 2009/2010	-100.00
Mixed Doubles League	3,621.00
Summer Singles League	6,355.39
Winter Doubles League 2010	7,457.00
Total Income	37,230.44
Expense	
Accounting/Tax Preparation	220.00
Bank Service Charge	50.00
Board Dinner Expenses	608.40
Board Meeting Expense	393.11
Calcutta Tournament Expense	5,027.68
Court Repairs & Equipment	1,230.88
Logo Design Contest - Prize	400.00
Membership Brochures	3,067.22
Midsummer Night T. Exp.	502.24
Misc. Expenses	210.20
Mixed Doubles League 2009/2010	3,760.37
Newsletters-Court Reporter	1,594.96
Non-Profit Fees	25.00
Paypal Fees	1,079.82
Postage	308.41
Summer Singles League Expenses	4,348.45
Supplies	15.06
Website	3,221.75
Winter Dbls. League Expenses	5,183.56
Total Expense	31,247.11
Net Income	5,983.33

Balance December 31, 2010 **\$40,963.44**

Email Tammie Snyder at
tammie@gte.net to place articles,
photos or advertising in the
March issue of the Court Reporter!

Deadline for the March issue
is Monday, February 21st.



WCRC
P.O. Box 4574
Walnut Creek, CA 94596
www.wcrc.net

PRESORTED
STANDARD
U.S. POSTAGE
PAID
Walnut Creek, CA
Permit No. 432

Winter Doubles League - Standings

Men's

3.5

W

L

Cooper/Corder

2

0

Ng/Mehlman

2

0

4.0

Van Oosbree/Goldman

3

0

Dasso/Yamamoto

3

0

4.5

Beauchemin/Wong

1

0

Women's

3.0

W

L

Blackiston/Poppleton

2

0

3.5

Chiang/Delgado

3

0

4.0

Cuneo/Sheehan

2

0

4.5/5.0

Lundstrom/Eversole

3

0