

THE COURT REPORTER

Newsletter of the Walnut Creek Racquet Club

September, 2012



Jeff Wong's 4.5 Men's team
swept through Sectionals
and are now NATIONALS Bound!

Walnut Creek Racquet Club

P.O. Box 4574 • Walnut Creek, CA 94596
(925) 945-0105 • www.wcrc.net

OFFICERS

President	Sterling Fairholm 595-3576 sterling@fairholminsurace.com
Vice President	Position Open
Secretary	Deanna Fong 952-9935 deanna_fong@yahoo.com
Treasurer	Tammie Snyder 957-0604 tammie@gte.net

ACTIVITY CHAIRPERSONS

Mailing	Janet Neilsen 837-8664 janneilsen@juno.com
Membership/ Court Facilities	Tim Tamura 228-3962 timbotam@att.net
Newsletter	Tammie Snyder 957-0604 tammie@gte.net
Website	Shari Gonzalez 691-9196 webmaster@wcrc.net
Tournaments	Tammy Chan 324-0524 tchanderson@gmail.com Lynne Weinshelbaum 285-9503 lweinshelbaum@yahoo.com
USTA Leagues	Bret Jones 890-1416 bretjones@comcast.net
Mixed Doubles Leagues	Pam Maloney 385-7205 pam4tenis@gmail.com
New Member Liason	Position Open
Doubles League	Cory Carr 324-8886 coryccarr@gmail.com
Summer Singles	Cameron Coltharp 510-717-2107 ccoltharp@telecarecorp.com

THE PRESIDENT'S REPORT



Sterling Fairholm
2012 WCRC President

Hello WCRC,

Now that the dust has settled on another Adult League season our fine club is once again sending another team to Nationals. Congratulations to **Jeff Wong's 4.5 men's team** for cruising through Districts and Sectionals. As always the club will be making a donation to the team to help with the cost of the trip. Also congratulations to the **3.5 ladies on Myrl Kan's team** and the **4.0 men on Sterling Fairholm's team** for making districts but just coming up short on advancing. We also have lots of Mixed teams deep in the playoff hunt with the last couple weeks of the season left. Let's send a mixed team to Nationals too!

The Fall Mixed season is shortly upon us with sign up's starting now online or on page 6-7, the season will run through December and the tournament will be held in January. Summer singles is winding down with one month left to get your matches in for the tournament, still plenty of time to get qualified.

Thank you to everyone who participated in the "Find a Match Drive" as well as the Mid Summers Tennis tournament, both events were a success and we appreciate the turnout.

See you on the courts!

Sterling



The 2012 Board has a few positions open. If you are interested in joining the WCRC Board please contact any board member for details. You can also check out any board positions responsibilities on line at: www.wcrc.net/

About/Board.aspx.

Contact Sterling Fairholm with any questions at sterling@fairholminsurace.com



**New Member
Information
Removed for
Privacy**



Tennis News



3.5 Women Nearly Make it to Nationals!

by Leonard Young

Myrl Kan's 3.5 adult ladies season was definitely one to be remembered for a long time. This was a season of brave hearts. Of the 14 regular season matches, 5 matches were won with a 3-2 score, 2 matches lost were 2-3. That was how close this season was. We entered our flight playoff facing top seeded Mo Satcher's WC team who defeated us 2-3 previously. We managed to turn the tables against her very strong team to win the flight. Next step was Sleepy Hollow, who was the other Diablo North winner. Facing a team that you haven't faced all season can be a tricky task. I like refer to it as a "blind date to fate". Sleepy Hollow was the home court which made the match even more challenging. Like the US Olympic female gymnasts, we rose to the occasion with a 5-0 sweep.

On to Harbor Bay in Alameda for Districts. As for many teams, availabilities can be tricky with post season, especially during the summer. Planned vacations can put some unexpected bumps in the road. The ladies set the standard by defeating Chabot Canyon 4-1. Our second round was against Kona Kai who also won 4-1 against Gilroy on Friday. This match couldn't have been any closer; 2-3 with all 3 losses going into super tiebreakers. We knew that mathematically we still had a chance if we win 4-1 and Kona Kai losses on Sunday. We had what I refer to as our "Moneyball" lineup. The movie "Moneyball" is about how the Oakland A's baseball team redid their team by adding under rated players.



front row: Kathy Lee, Myrl Kan, Akiko Kearney, Robin Doyle, Leonard Young; back row: Sheryl Lawrentz, Michele Dwinell, Debbie Wilson, Linda McDonald, Karen Gee

The end result was the A's set a professional baseball record by winning 20 games in a row. This was ironic that Districts was in Alameda. You could literally see the A's stadium from Harbor Bay. Our lineup included a 3.0 singles player at #1 and our #1 playing at 2. Our #1 doubles seniors who never even practiced together and #2 doubles were seniors and our 3rd doubles that had one 3.0 with a senior who hadn't even played a playoff game before. It worked like a charm. We swept 5-0. We waited to see the outcome of the Kona Kai/Chabot Canyon match. Kona Kai closed our season by winning two super tiebreakers against Chabot to win Districts. We tied with Kona Kai in individual matches won with 11 and 4 losses. We had fewer sets lost (10 to Kona Kai's 14) and games lost (110 to Kona Kai's 133). Just a few more points in those super tiebreakers and we would have been Sectional bound.

Our players (Akiko Kearney, Belinda Buchanan, Caryl Kohler, Cynthia Attiyeh, Diana Solero, Fran Macavinta, Jessi Knight, Karen Gee, Kathy Lee, Kristine Langenbahn, Linda McDonald, Lisa Dell'Anno, Lisa Schaeffer, Maria Chiang, Marina Wills, Michele Dwinell, Rebecca Huang and Sheryl Lawrentz, Debbie Wilson, Robin Doyle, Debby Rechnitz, Nancy Levin) gave 200%. They gave 100% on the court and also 100% as supporters. Caryl Kohler practically arrived straight from watching her bronze medalist daughter in London to cheer us on. She even wore our team color red minus the white and blue. The success of this season was due to great team work, hard work and Captain Myrl's leadership. We never let up and because of that, we never let down. Thanks to the team and all the supporters. Thanks for an outstanding season.



front row: Leonard Young, Myrl Kan, Akiko Kearney
back row: Nancy Levin, Karen Gee, Michele Dwinell, Kathy Lee, Maria Chiang, Sheryl Lawrentz, Caryl Kohler, Marina Wills



Tennis News



US Women Celebrate Winning Bronze

by Caryl Kohler

With the entire crowd cheering Kara to the wall in her first swim meet at four years old to the Olympic Final with over 30,000 people including Prince William and Harry cheering from the stands has caused me to reflect on many proud moments I have had throughout Kara's athletic career. Nothing prepared me for the emotions I felt seeing my daughter on the medal podium at the Olympics.

The world can seem so divided, but the "spirit of the Olympics" brought our world together. I will never forget the experience, excitement, friendliness, and support everywhere we went. It was a wonderful ten days. And... "London you rocked it!"



Natalie Dell, Kara Kohler, Megan Kalmoe and Adrienne Martelli of the United States celebrate on the podium after winning bronze in the Women's Quadruple Sculls on Day 5 of the Olympics.



WCRC Fall Mixed Doubles League Registration Form (Also on-line at www.wcrc.net)

MALE PLAYER

FEMALE PLAYER

Name	_____	_____
Mailing Address	_____	_____
City	_____	_____
ZIP Code	_____	_____
Home Phone	_____	_____
Work or Cell Phone	_____	_____
E-mail address	_____	_____
NTRP level	_____	_____

WCRC Member? ☐ YES ☐ NO

☐ YES ☐ NO

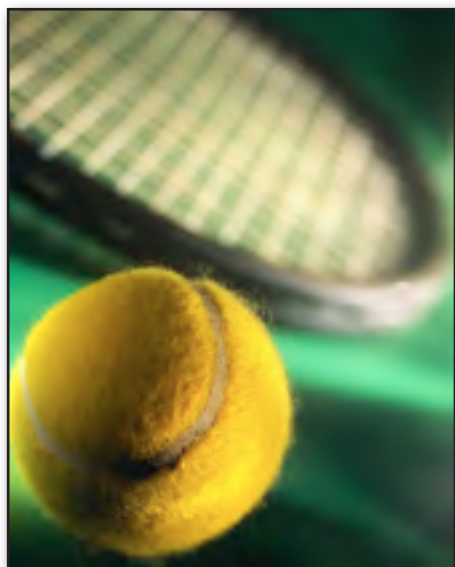
Division for which you are registering (please check one):

☐ Mixed 6.0

☐ Mixed 7.0

☐ Mixed 8.0

☐ Mixed 9.0

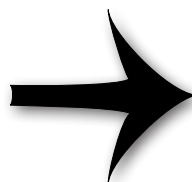


On-Line Registration will remain open until **December 1, 2012**.
If you would like to register by mail, return this form by **October 1, 2012** with a check for registration fees (payable to WCRC) to:
WCRC, 970 Janet Lane, Lafayette, CA 94549.

Questions?

Call Pam Maloney at 925-385-7205
or via e-mail pam4tenis@gmail.com

Find detailed Information on page 7...



League Information: Players may enter the WCRC Mixed Doubles League in more than one division (i.e, 6.0 and 7.0), as long as he/she is not playing below his/her level. If a player is entering in more than one division, he/she may enter with the same partner or a different partner but may not enter with different partners at the same level.

Once League play is complete and registration for the end-of-League Tournament begins, a player may **NOT** enter the Tournament at more than one level. **No exceptions!**

WCRC Fall Mixed Doubles League

Registration Form (Also on-line at www.wcrc.net)

We will continue to offer on-line scoring and real-time updated standings for all four (4) divisions. Don't forget that the league registration fee includes unlimited regular season doubles matches, a league gift and may include an end of the season tournament dependent upon weather and court scheduling.

LEAGUE COMMISSIONER Pam Maloney: 925-385-7205

DATES September 3, 2012 - January 6, 2013

ENTRY FEES

WCRC Members
On-Line Registration: \$17.50 (\$35 per team)
Mail In Registration: \$22.50 (\$45 per team)

Non WCRC Members
On-Line Registration: \$27.50 (\$55 per team)
Mail In Registration: \$32.50 (\$65 per team)

FORMAT

Mixed Doubles, 16-week regular season
(players grouped by combined NTRP level; ie. 7.0 can be a 4.0 man and a 3.0 woman or two 3.5 players)

NTRP LEVELS Mixed 6.0-9.0

SCHEDULING

This is an open schedule. Players are responsible for scheduling their own matches. Players will be provided with a contact list of participants within their division.

MATCH FORMAT

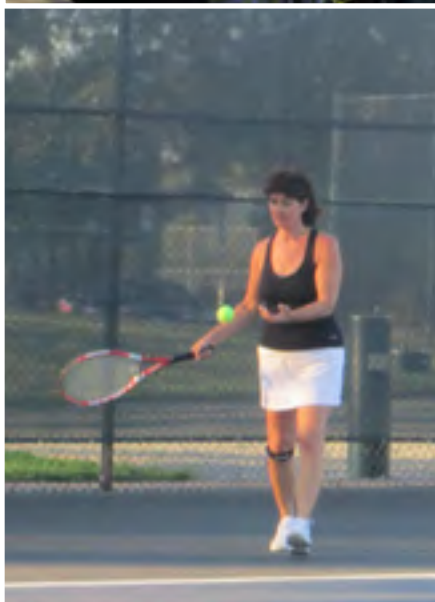
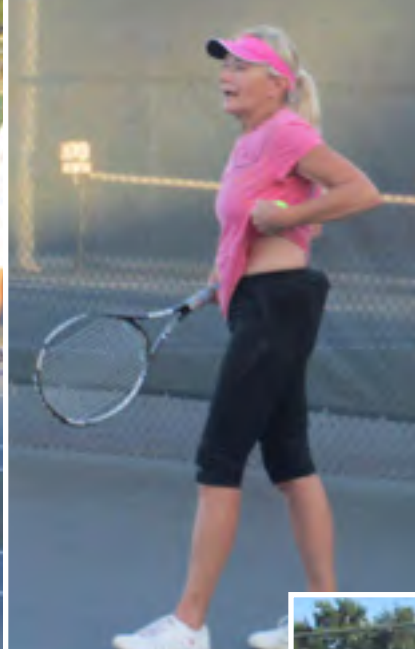
Best two-out-of-three set format, 12-point tiebreaker (regular scoring). No SUPERTIEBREAKERS! Both teams responsible for bringing balls to match; winning team gets unopened can. Matches should be played according to the "Rules of Tennis."

TOURNAMENT

End of season tournament with draw determined by the league standings to be held over a weekend TBD dependent upon court scheduling and weather. To qualify for the tournament, teams must have completed and reported at least 4 matches during the regular league season. Depending on the number of entrants tournament play may include Friday night play. In addition, draws with large numbers of players may be required to play matches prior to the tournament weekend. Seeding for the tournament will be based on regular season standings. The more matches you and your partner play, the higher your ranking will be.



Mid-Summer Night Tennis



SWAB+DNA=
SAVE A LIFESM





What's New on the Courts!

September Pass Holder's Special

All Court Usage Pass Holders who visit the Heather Farms Courts for at least 8 times during the month of September, will be entered into a drawing to receive a FREE pair of tennis shoes of your choice. Enjoy!



Registration for Fall Classes

Registration for the Fall Tennis Classes have begun and the first classes will be meeting during the 2nd week of September. These classes will run for 12 weeks, and you can register on-line at lifetimetennis.com or in the office at Heather Farms.

US Open Adult Tennis Mixer & Party

When: Saturday, September 8th from 6-8pm
Costs: FREE for all Court Usage Pass Holders, \$6 for guests.



Lifetime Tennis would like you to join us for a night of Doubles Round Robin play and prizes. This is a BABOLAT sponsored event and will include prizes for round robin winners as well as drawings for discounted group and private lessons. We will be providing some snacks, but ask that you bring a dish or appetizer to share. This event is limited to first 32 participants. All abilities are welcome and teams will be divided based on NTRP/level of play. You don't need to bring a partner as we will pair doubles teams. Sign up in the Walnut Creek Tennis Center office to reserve your spot today!

CALENDER OF EVENTS

Sept

Sept. 3	USTA Fifty Mixed Opens
Sept. 23	USTA Mixed League Ends
Sept. 28-30	USTA Mixed League Playoffs Round 1

Oct

Oct. 1	USTA Combo Doubles Opens
Oct. 5-7	USTA Mixed League Playoffs Round 2
Oct. 12-14	USTA Mixed League Districts & Sectionals
Oct. 19-21	WCRC Summer Singles Tournament
Oct. 27	WCRC Summer Singles Tournament

Dec

Dec. 2	USTA Fifty Mixed Ends
Dec. 7-9	USTA Fifty Mixed Playoffs Round 1
Dec. 14-16	USTA Fifty Mixed Playoffs Round 2

Jan

Jan. 13	WCRC Mixed Doubles League End
Jan. 20	USTA Combo Doubles Ends

TREASURER'S REPORT

Tammie Snyder

as of July 31, 2012



Walnut Creek Racquet Club Profit and Loss Standard January through July 2012

Jan - Jul '12

Ordinary Income/Expense

Income

Advertising Income	175.00
Calcutta Auction	2,620.00
Court Services	15.00
League Dues	12,991.47
Membership Dues	13,484.43
Tournament Dues	374.00

Total Income

29,659.90

Expense

Bank Service Charges	222.14
Board Meeting	639.43
Calcutta Expenses	5,511.62
Dues and Subscriptions	40.00
Fall Mixed Tournament Expenses	490.00
Filling Fees	55.00
Mixed Double Expenses	2,177.04
Office Supplies	11.14
Postage and Delivery	485.93
Printing and Reproduction	1,105.04
Professional Fees	175.00
SUSPENSE	1,480.00
Tax Preparation	435.00
Tennis Balls	480.00
Tournament Food	2,684.51
Website	554.55
Winter Doubles Expenses	3,128.98

Total Expense

19,675.38

Net Ordinary Income

9,984.52

Other Income/Expense

Other Income

Interest Income	11.84
-----------------	-------

Total Other Income

11.84

Net Other Income

11.84

Net Income

9,996.36

Balance as of July 31, 2012

\$58,539.07



WCRC
P.O. Box 4574
Walnut Creek, CA 94596
www.wcrc.net

Summer Singles League - Standings

Men's

	W	L
3.0		
Ahmed Murad	7	0
3.5		
Joseph Alcantara	14	2
4.0		
Ken Bakar	15	2
4.5		
Michael Yurkus	10	1

Women's

	W	L
2.5		
Cheryl Enos	3	1
3.0		
Martha Spanos	8	3
3.5		
Kathleen Lloyd	8	0
4.0		
Nancy O'Neil	7	0
4.5/5.0		
Marianne Dundon	6	3