

# THE COURT REPORTER

*Newsletter of the Walnut Creek Racquet Club*

*March, 2019*



Although the rains have wrecked havoc on USTA matches, tournaments and social tennis, they did bring a beautiful double rainbow over Heather Farm Courts...

*Photo by Antonio Dalupan*

## Walnut Creek Racquet Club

P.O. Box 4574 • Walnut Creek, CA 94596  
(925) 945-0105 • www.wcrc.net

### OFFICERS

<b>President</b>	<b>Glenn McBee</b> - 984-6710 glennmcbec@gmail.com
<b>Vice President</b>	<b>Tammie Snyder</b> - 957-0604 tammie4tennis@gmail.com
<b>Secretary</b>	<b>Deanna Fong</b> - 952-9935 deanna_fong@yahoo.com
<b>Treasurer</b>	<b>Cara Mia Barnacascel</b> - 413-2871 sakuraiiko@gmail.com

### ACTIVITY CHAIRPERSONS

<b>Club Photographer</b>	<b>Bob Satcher</b> - 672-2110 bsatcher@astound.net
<b>Newsletter</b>	<b>Tammie Snyder</b> - 957-0604 tammie4tennis@gmail.com
<b>Website</b>	<b>J. Patrick Forden</b> - 415-205-3515 forden@percepticon.com <b>Lynne Weinshelbaum</b> - 285-9503 lweinshelbaum@yahoo.com
<b>Tournaments</b>	<b>Nicole Leong</b> - 407-243-8645 nhlphoenix@gmail.com <b>Sally Krapf</b> - 415-290-6466 sallykrapf@gmail.com
<b>USTA Leagues</b>	<b>Sterling Fairholm</b> - 595-3576 sterling@fairholminsurance.com
<b>Membership</b>	<b>Pam Maloney</b> - 787-3970 pam4tenis@gmail.com
<b>City of Walnut Creek Liaison</b>	<b>Glenn McBee</b> - 984-6710 glennmcbec@gmail.com
<b>Mixed Doubles Leagues</b>	<b>Nicole Leong</b> - 407-243-8645 nhlphoenix@gmail.com
<b>Doubles League</b>	<b>Garvin Tom</b> - 209-696-5445 gtom12@hotmail.com
<b>Summer Singles</b>	<b>Cameron Coltharp</b> - 510-717-2107 ccoltharp@telecarecorp.com
<b>WCRC Leagues Gift Coordinator</b>	<b>Priyanka Holmes</b> - 609-647-3326 priyanka.holmes@gmail.com
<b>Social Media Coordinator</b>	<b>Garvin Tom</b> - 209-969-5445 gtom12@hotmail.com

## THE PRESIDENT'S REPORT



**Glenn McBee**  
2019 WCRC President

### March 2019

Will the rain ever quit! I know my fellow Captains hope it will, and Isabella... She has to be going loco. Well, the rain will pass and tennis will continue. In the mean time we continue to plan for matches with hopes we can play. Ho Hum

Here is another opportunity to join in more WCRC tennis, Winter Doubles. It's a great league and runs until 5/10.

Find a partner and sign up at <http://www.wcrc.net/Leagues/Login.aspx>.

So how do you deal with new fees? Buy a Plus Pass and never worry, or buy Pass (Regular, which excludes USTA) and just pay \$4 with each home USTA match. Another convenient option is to put \$ in your account and then just have \$ deduct when you play. Contact Lifetime to get full details.

I'm looking for your support at WC City council meeting on Tuesday 3/19 6pm at WC city hall. Final contract for access to NG courts to be presented to city council for approval (No, I don't know what it is yet; I expect to know prior to meeting.) Will you join me?

Congrats to all of the USTA teams from the WCRC in playoffs! GO CREEK!

#### Combo Districts - February 22-24

Women - 5.5 Cara Mia Barnacascel, 6.5 Krisztina Kohlhaas, 6.5 Cara Mia Barnacascel, 7.5 Maureen Satcher, 8.5 Brian Italia

Men - 6.5 Patrick Forden, 7.5 Tammie Snyder, 8.5 Tammie Snyder

#### Combo Sectionals - Daytime = March 16-17

Women Daytime - 7.5 Myrl Kan, 7.5 Tina Sorensen Berman

#### Mixed 40+ Sectionals - March 1-3

8.0 Violeta Franco

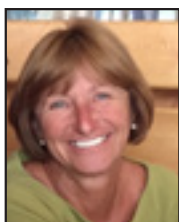
Remember to – Be kind, keep it fun and enjoy your time on the court.

Glenn

# NEW MEMBERS

**Welcome to Our 7 New Members**  
**Current Membership: 1296**

Sahar Abdehou	San Ramon	2.5	Lori Katrine Shelton	Oakland	3.0
Alain Gendre	Danville	3.5	Gary Wiedemann	Concord	3.0
Anna Le	Novato	3.5	Mohammad Ziaee	Dublin	3.0
Vannessa Lum	San Francisco	4.5			



Membership questions contact:  
**Pam Maloney** at 925-787-3970 or  
 email at: [pam4tenis@gmail.com](mailto:pam4tenis@gmail.com)

## **Lifetime Activities**

## What's Happening at the Courts?

### Changes at the WCTC

A new fee structure has been put in place, which took effect on Jan 1<sup>st</sup>, 2019. The changes in the fee structure aim to foster more equitable court access to different users in the community. A chart with more information on this fee change is available on page 13. For more information, please contact Isabella Galang at [isabellag@lifetimeactivities.com](mailto:isabellag@lifetimeactivities.com).

**Classes & Camps – Sign up today!** Spring Lessons and Summer Camp registration is ongoing. We are also offering tennis and indoor activities camps on select weeks in the summer. You can register and preview offerings online on our website: [www.lifetimeactivities.com](http://www.lifetimeactivities.com) or stop by the office.

### Monthly Pass Special:

Valid Court Usage Pass Holders are entitled to take advantage of our March Pass Special: **BUY 3 CANS OF US OPEN TENNIS BALLS AND GET A FREE SNACK SHOP ITEM OF YOUR CHOICE.** This promo is only applicable to Wilson US Open Extra Duty Tennis Balls, youth balls are not included. Each passholder may take advantage of this promo once throughout the month of March. Ball purchases are non-refundable and free snack shop items have no cash value.



**Want to Play with the Pro?:** Our USPTA Certified Pro Duncan Leiggi will be hosting Round Robin Clinics every **Tuesday (9-11AM)** and **Friday (8-10PM)**. Space is limited, so be sure to sign up in advance to hold your spot. (\$8.00 Pass Holders, \$16.00 Non-Pass Holders) See you on the courts!

**Visit us online at [lifetimeactivities.com](http://lifetimeactivities.com)**  
**or stop by the office at 1751 Heather Drive.**  
**Please call with any questions at 925-945-0105.**

# WCRC Men's & Women's 2019 Winter Doubles League Registration Form (Also on-line at [www.wcrc.net](http://www.wcrc.net))

PLAYER 1

PLAYER 2

Name	_____	_____
Mailing Address	_____	_____
City	_____	_____
ZIP Code	_____	_____
Home Phone	_____	_____
Work or Cell Phone	_____	_____
E-mail address	_____	_____
NTRP level	_____	_____

WCRC Member? ☐ YES ☐ NO

☐ YES ☐ NO

Division for which you are registering (please check one): NTRP (check one)

- ☐ Men's 3.0
- ☐ Men's 3.5
- ☐ Men's 4.0
- ☐ Men's 4.5/5.0

- ☐ Women's 2.5/3.0
- ☐ Women's 3.5
- ☐ Women's 4.0
- ☐ Women's 4.5/5.0

Registration Fees (note - if you are interested in joining the Racquet Club, please download a membership form from <http://www.wcrc.net/about/membership.htm> and return it with this application):

- \* \$50 per team (both Walnut Creek Racquet Club Members) • \$40 per team for on-line registration
- \* \$60 per team (one WCRC Member, one non-member) • \$50 per team for on-line registration
- \* \$70 per team (both non WCRC members) • \$60 per team for on-line registration

On-Line Registration will remain open until **March 31, 2019**. If you would like to register by mail, return this form by **January 31, 2019** with a check for registration fees (payable to Walnut Creek Racquet Club **NOT** WCRC) to: Walnut Creek Racquet Club, 224 Farm Ln., Martinez, CA 94553.

**Questions? Call Garvin Tom at (209) 969-5445 or via e-mail [gtom12@hotmail.com](mailto:gtom12@hotmail.com)**

**League Information:** Players may enter the WCRC Winter Doubles League in more than one division (i.e. 3.0 and 3.5), as long as he/she is playing at or above his/her level. If a player is entering in more than one division, he/she may enter with the same partner or a different partner but may not enter with different partners at the same level.

The league runs from December 22, 2018 - May 10, 2019. The tournament will run the weekend of May 17-19, 2019.

Once League play is complete and registration for the end-of-League Tournament begins, a player may **NOT** enter the Tournament at more than one level. **No exceptions will be made.**





## The 10th Annual Service Champions Doubles Classic

Saturday, Sunday and Monday May 25th, 26th and 27th [Memorial Day Weekend 2019](#)



Please join us to play the Tri Valley's premiere tennis event. This is an all doubles event for players of all ability levels to benefit Valley Humane Society and other local no-kill animal welfare organization.



### DIVISIONS:

Men's Doubles Combination	6.0, 7.0, 8.0, 9.0, 10.0 & Open
Women's Divisions Combination	5.0, 6.0, 7.0, 8.0, and 9.0+
Mixed Doubles Combination	6.0, 7.0, 8.0, 9.0, and 10.0+

*Seams will be guaranteed two matches. You may play in two events.*

**Entry Information:** To sign up go online to: [www.tennis4dogs.com](http://www.tennis4dogs.com)

**Entry deadline is May 18th:** If you would like to enter but do not have a partner, send an email to: [rubytennis2@yahoo.com](mailto:rubytennis2@yahoo.com) and we will find a partner for you.

**Entry is \$100 per person (\$200 per team) until Wednesday, May 1st**

**Register Early!** After 5/1/19, entry fee will be \$125 per person/\$250 per team

### Draws and Scheduling:

The draws will be posted online on May 22nd. We want everyone to play so we will be as flexible as possible with scheduling. The bulk of the play will be at Livermore Valley Tennis Club with satellite courts at Ruby Hill Golf Club and Castlewood Country Club, if needed. There will be food and wine, as well as prizes for division winners.

### Location:

Please check in for all matches at the courts at Livermore Valley Tennis Club, located at 2000 Arroyo Road, **Livermore**. If your matches are at an alternate site, directions will be provided.

### Valley Humane Society:

Valley Humane Society creates a brighter future for cats and dogs by encouraging and strengthening the bond between people and pets. VHS rescues and rehabilitates companion animals, champions responsible caretaking, shares pets' soothing affections with people in need of comfort, and supports and preserves existing pet-guardian relationships. For information, please visit [valleyhumane.org](http://valleyhumane.org)

### Dress Policy:

Please no marking dark soled shoes.

Questions or for more information, please see our website:

**[www.tennis4dogs.com](http://www.tennis4dogs.com)**

or contact: tournament director Kevin Pope 925-922-0415

or email: [rubytennis2@yahoo.com](mailto:rubytennis2@yahoo.com)

Entry includes: Shirts, hats, swag bags. Shorts or Skirt for second entry.





# Tennis News



## 7.5 Combo Women Represent at Districts

Congratulations to all of our wonderful 7.5 ladies! After a lot of great tennis at Districts last weekend we ended up in a three way tie for first, losing to the wonderful women of Chico! Tons of fun! GO CREEK!



*From top left to right.  
Top, Wyler Collo and Zuhel Elhan*

*Middle: Tina Sorensen, Judy Cummins, Maureen Satcher*

*Bottom: Terri Coleman, Denise Maloney, Robin Elawady, Cynthia Attiyeh*

# Districts!

*Pictured left to right:  
Zuhel Elhan, Ashley Kechter, Tina Sorensen Berman, Wyler Collo, Martha Spanos, Moe Satcher, Shannon Carver, Terri Coleman.  
Not Pictured Robin Elawady, Denise Maloney, Pam Maloney, Cynthia Attiyeh, Susie Gabe, Terri Hernandez, Patty Gross, Judy Cummins, Laurie Blackiston, and Penny Davis*







# Tennis News



## Deuces Wild 5.5 and 6.5 CW Make it to Districts!

The 5.5 Deuces Wild team had a great time at Districts, almost everyone got a chance to play and for many it was their first time there! We faced some tough opponents, one team had a 2.5 that was DOUBLE BUMPED, 2 of my best players fought hard but were not able to overcome that obstacle. Everyone had a blast though and were so happy to have the opportunity to represent Walnut Creek!

*Maria Mather, Vangie Wolford, Courtney White, Captain Cara Mia Barnacascel, Barbara Beckley, Co-Captain Nancy Guzzaldo, Richelle Buchholz, Cindy Plua, Kayla Hornbrook.*



*Julie Ellis, Malou Matthew, Cara Mia Barnacascel, Claire Jackson, Kayla Hornbrook, Richelle Buchholz, Nancy Guzzaldo. Not pictured: Julie Amthor, Kelly Anderson, Kelly Copland, Barbara Dyer, Phyllis Flack, Marison Kimura.*

Deuces Wild 6.5 was ready to bring it at Districts! We were short a few players so many of the ladies had to play all the matches, but they brought their A game every single match. We faced the powerhouse team of Vacaville first and had a tough time against them, a majority of their team were bumped and they were a very strong team. We then proceeded to beat the other 3 teams and the end result was Vacaville took first and Deuces Wild took second. So proud of the ladies for playing their hearts out!



*Brigitte Shaw, Jenn Cano, Becca Perez, Captain Cara Mia Barnacascel, Co-Captain Sally Krapf, Christina Tapp, Charlette Plinneke, kneeling Teri Frangie.*



*Jenn Cano, Becca Perez, Karen Treppa, Teri Frangie, Cara Mia Barnacascel, Christina Tapp, Charlette Plinneke, Stefanie Cohen.*



*Jenn Cano, Karen Treppa, Nancy Guzzaldo, Cara Mia Barnacascel, Christina Tapp, Dana Andrew, Teri Frangie, Sally Krapf, Charlette Plinneke. Not Pictured: Amanda Golovin, Cheryl Enos, Colleen Hendrickson, Kelly Copland, Lisa Italia, Vera Michailidis.*





# Tennis News



## Walnut Creek 6.5 Women Head to Sectionals!

The Walnut Creek 6.5 Women AKA **"Pure Energy"** won their Combo Districts and are heading to Sectionals! Captained by Krisztina Kohlhaas, our ladies fought hard to win all three matches and emerge District Champions.

The highlights include Somi and Roz winning 6-0 6-0 against a woman who is now a 4.0; and Regina and Marison winning in straight sets against a pair that is now 4.0 and 3.5.

With a last-minute change to the schedule, our team scrambled to field a lineup yet managed to pull through despite setbacks. While we were short on 3.5s, our 3.0s Kim Caison and Isabella made the trip to Sacramento as backups, demonstrating incredible team spirit and much-appreciated support. Also, a huge shout out to Roz's husband Salem, who came to every match and cheered on the team, as well.

Congratulations to all our incredible players. Sectionals, here we come!



**Pure Energy:** Kim Caison, Robin Elawady, Isabella Galang, Stephanie Hiew, Regina Hughes, Marije Kentie, Marison Kimura, Krisztina Kohlhaas (Captain)

Judy Kraus, Somi Lim, Malou Matthew, Marilyn Meganck, Janet Nielsen, Kim Phillips, Deidre Rubcich, Susan Sovik (CoCaptain), Shawnley Walton (CoCaptain), Vangie Wolford, Roz Zahiri, Caroline Zhao

# Districts!







# Tennis News



## Walnut Creek 8.5 Women Come Up Just Short at Districts

Our 8.5 girls played hard and battled. Didn't go our way but we had loads of fun!



# Districts!



*Top photo: Sharleen Houston, Raquel Atkins, Athena Lofquist, Christine Wall and Brian Italia (captain)*

*Middle photo: Raquel Atkins and Nancy Smith.*

*Bottom photo: Athena Lofquist, Raquel Atkins, Christine Wall and Alyssa Hilgen.*





# Tennis News



## Walnut Creek 7.5 & 8.5 Combo Men's Have a Blast at Districts!

Tammie Snyder and Kevin Kyono's 7.5 Combo and Tammie and Garvin Tom's 8.5 Combo Men's teams had a lot of cross over players to play 6 matches in 2 days. Luckily, both teams were at Laguna Creek. It was fun to see so many WCRC teams representing at Districts! 7.5's had a tough flight throughout. But the 8.5's came within a line of heading to sectionals. We had 25 different players play and 45 players/spouses/friends cheering on our teams. We were definitely the loudest ones on the sidelines.

Most proud of Kevin Kyono and Parnter Ralph Sanzeri who received the Sportsmanship Pin!







# Tennis News



7.5 CM: Jeff Bennett, Dean Christman, Lloyd Hohenstein, Jim Hopkins, Bret Jones, James Kim, Kevin Kyono, Chris Lau, Darien Lum, Samson Mai, Greg Maroulas, Robert Mimaki, Paul Morrow, Troy Rondeau, Ralph Sanzeri, Dan Slaven, Justin Snyder, Matt Starke, Garvin Tom and Tal Yahud

8.5 CM: Sanjay Backliwal, Parag Bhatt, Mark Chase, Nick Greenwald, Bret Jones, James Kim, Paul Lizama, Pete Lowden, Darien Lum, Thomas Lyhne, Debashis Panda, Troy Rondeau, Justin Snyder, Eudean Sun, Marty Tedlock, Glenn Teixeira, Garvin Tom, Billy Warm, Stephen Wright, Shuangxi Xu, Tal Yahud and Mike Yurkus.







# Tennis News



## Combo Men's 6.5 - Commanding Win at Districts!

by Patrick Forden

Following a fantastic undefeated season, we came to District Championships with a 12-0 record...

It was an excellent weekend in Folsom. The weather was perfect. The team handled no-ad scoring without a hitch. The competition was tough. There was great tennis with epic battles and, of course, a bit of suspense and drama with a couple close finishes. Some great moments of glory. We came prepared, played hard and prevailed with only one line lost all weekend.

We are proud to do our part in keeping the Walnut Creek Racquet Club reputation for good sportsmanship and competitive commitment to victory alive and thriving.

We go into Sectionals with a 15-0 record. Onward!

*Photo on right: Mike McMahon, Dan Katzman, Andrew Bartlow, Adam Carabetta, Patrick Forden, Clive Goodwin, David Takeuchi, Oscar Goodwin.*



*Photo below: Mike McMahon, Martin Sanchez, Chris Lau, Patrick Forden, Adam Carabetta, Oscar Goodwin, David Takeuchi.*





<b>COURT USAGE FEE STRUCTURE</b> Effective January 1, 2019	<b>90-Minute Court Fee</b> (Non-Passholder)	<b>4-Month Seasonal Pass</b>	<b>Youth Annual Pass</b>	<b>Senior Annual Standard Pass</b>	<b>Senior Annual PLUS Pass</b>	<b>Adult Annual Standard Pass</b>	<b>Adult Annual PLUS Pass</b>	<b>Advanced Reservation Fee</b> (Non-Passholder)
<b>FEE</b>	<b>\$ 5</b>	<b>\$100</b>	<b>\$120</b>	<b>\$200</b>	<b>\$275</b>	<b>\$250</b>	<b>\$325</b>	<b>\$12</b>
<b>VALIDITY / DURATION</b>	90 Minutes	4 Months	1 year	1 year	1 year	1 year	1 year	1 event / match
<b>AGE GROUP</b>	All Ages	All Ages	15 & Under <sup>1</sup>	60 & Over <sup>1</sup>	60 & Over <sup>1</sup>	Ages 16-59	Ages 16-59	All Ages
<b>Tennis OPEN PLAY</b> (Reservations made 8 days or less / Walk Ons)	✓	✓	✓	✓	✓	✓	✓	✗
<b>EVENT / ADVANCED RESERVATIONS</b> (Made 9+ days ahead)	✗	\$4 fee per event*	\$4 fee per event*	\$4 fee per event*	✓	\$4 fee per event*	✓	✓
<b>USTA League Home Matches</b>	✗	\$4 fee per match*	\$4 fee per match*	\$4 fee per match*	✓	\$4 fee per match*	✓	✓
<b>BALL/ FALL / SPRING League Home Matches</b>	✗	\$4 fee per match*	\$4 fee per match*	\$4 fee per match*	✓	\$4 fee per match*	✓	✓
<b>Official WCRC Events and Tournaments</b>	✗	\$4 fee per event*	\$4 fee per event*	\$4 fee per event*	✓	\$4 fee per event*	✓	✓
<b>Access to LT Monthly Pass Specials</b>	✗	✓	✓	✓	✓	✓	✓	✗
<b>Discounted LT Round Robin Clinics</b>	✗	✓	✓	✓	✓	✓	✓	✗
<b>Pickleball<sup>2</sup> Recreational Open Play</b>	✗	✓	✓	✓	✓	✓	✓	✗

\* Patrons may put a credit on their account to cover Advanced Reservation fees

<sup>1</sup> A valid ID is required for Youth / Senior Discount. Must be of required age at time of purchase. No prorations / exceptions will be made.

<sup>2</sup> Estimated Pickleball Construction is Fall 2018

Note: All current passes (Annual R/NR and 4-Month R/NR) will be honored until the date of pass expiration.

# Girls High School Play Series

**INTRODUCTORY PLAY OPPORTUNITIES FOR JUNIOR & HIGH SCHOOL PLAYERS**

**FOOD!**  
**MUSIC!**  
**PRIZES!**  
**GAMES!**  
**FUN!!!**

**When:** Saturday, March 30th

**Time:** 9AM—3:00 PM

**Where:** Walnut Creek Tennis Center

1751 Heather Dr. Walnut Creek, CA 94598

**Tournament Fee: FREE\***

\*We do ask that you register as a USTA Member

**To Register: [Click HERE](#)**

<https://tennislink.usta.com/tournaments/TournamentHome/Tournament.aspx?T=236225>

## Dynamic Duo Play

Partner with your friend to play doubles

Then play singles against one of your opponents

## Fast 4 Scoring

First to 4 games with no advantage scoring with a 5 point tiebreaker at 3-3

## Round Robin Format

3 rounds of doubles and 3 rounds of singles within your bracket

**For More Information, Contact:**

**Troy Rondeau**  
Youth Tennis Specialist  
[rondeau@norcal.usta.com](mailto:rondeau@norcal.usta.com)



#ilovetennis Let's Play online! #NorCalTennis  
Get NorCal Stories & Events: [www.ustanorcalnews.com](http://www.ustanorcalnews.com)



@ustanorcal



/ustanorcal



/ustanorcal



/ustanorcal





# CALENDER OF EVENTS

# 2019

## Mar

Mar 1-3	USTA 40+ Mixed Sectionals
Mar 4	USTA 18+ Team Registration Closes
Mar 16-17	USTA Combo Sectionals - Fresno
Mar 17	USTA 40+ Team Season Closes
Mar 17	USTA 55+ Mixed Team Season Closes
Mar 22-24	USTA 55+ Mixed Playoffs Round 1
Mar 29-31	USTA 55+ Mixed Playoffs Round 2
Mar 31	USTA 40+ Season Closes
Mar 31	USTA 18-39 Season Closes

## Apr

Apr 1	USTA 18+ Season Opens
Apr 5-7	USTA 18-39 Playoffs Round 1
Apr 5-7	USTA 40+ Playoffs Round 1
Apr 12-14	USTA 18-39 Playoffs Round 2
Apr 12-14	USTA 40+ Playoffs Round 2
Apr 12-14	USTA 55+ Mixed Sectionals
Apr 15	USTA 55+ Team Registration Opens
Apr 15	USTA Mixed Doubles Team Registration Opens

## May

May 3-5	USTA 40+ Districts
May 17-19	USTA 40+ Sectionals
May 20	USTA 55+ Team Registration Closes

## TREASURER'S REPORT

**Cara Mia Barnacascel**  
as of January, 2019



### Walnut Creek Racquet Club

PROFIT AND LOSS  
January 2019

	TOTAL
Income	
League Dues	0.00
Fall Mixed Doubles League	37.34
Winter Doubles League	2,197.98
<b>Total League Dues</b>	<b>2,235.32</b>
Membership Dues	4,015.83
<b>Total Income</b>	<b>\$6,251.15</b>
GROSS PROFIT	<b>\$6,251.15</b>
Expenses	
Board Meeting	116.32
District Fees	720.00
Equipment	19.00
League Expenses	0.00
Fall Mixed League Expenses	1,147.46
Summer Singles Expenses	592.68
<b>Total League Expenses</b>	<b>1,740.14</b>
Office Supplies	86.14
Printing and Reproduction	20.45
Sectionals Fees	90.00
Website	129.85
<b>Total Expenses</b>	<b>\$2,921.90</b>
NET OPERATING INCOME	<b>\$3,329.25</b>
NET INCOME	<b>\$3,329.25</b>

Balance as of January, 2019 **\$44,386.20**

**To place articles, photos or  
advertising in the April issue  
of the Court Reporter!**

**Email Tammie Snyder at  
tammie4tennis@gmail.com**

**Deadline for the NEXT issue  
is Monday, March 25th.**



Do you have a favorite photo  
you'd like to see in an upcoming  
newsletter?

Send any photos or articles to  
tammie4tennis@gmail.com



There is an incoming Girls JV  
assistant coach and this is  
an opening that represents  
an opportunity to work as  
a classified employee for  
Mount Diablo Unified School  
District and a stipend  
up to \$ 2000.

This position is open and includes a USTA Basic High  
School Coach course and other potential professional  
development courses.

Any questions please contact  
David Pintado at 925-708-1332 or  
davidpintado727@gmail.com.



### Combo Captains Extraordinaire

Both Tammie Snyder and Cara Mia Barnacascel  
captained two different teams at Combo Districts.  
But were still able to take a break for a photo!

## Winter Doubles League - Standings

### Men's

**3.5**

Murad/Rabenstein

**W**

3

**L**

0

**4.0**

Carbonneau/Tabtab

2

1

**4.5**

No matches played

### Women's

**3.0**

Woodworth/Karson

**W**

1

**L**

0

Hornbrook/Beckley

1

0

Keselman/Booth

**3.5**

Pruden/Krapf

1

0

**4.0**

Blackman/Dupuy

2

0

Steele/Sorensen

2

0

Pearson/Axup

2

0

**4.5/5.0**

No matches played