

THE COURT REPORTER

Newsletter of the Walnut Creek Racquet Club

March, 2020



Austin Steele hits a big serve in the Mixed Doubles Tournament.

Walnut Creek Racquet Club

P.O. Box 4574 • Walnut Creek, CA 94596
(925) 945-0105 • www.wcrc.net



OFFICERS

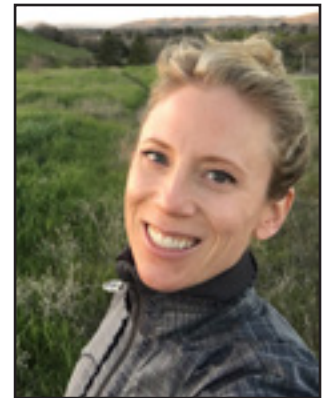
President	Sally Krapf - 415-290-6466 sallykrapf@gmail.com
Vice President	Tammie Snyder - 957-0604 tammie4tennis@gmail.com
Secretary	Deanna Fong - 952-9935 deanna_fong@yahoo.com
Treasurer	Cara Mia Barnacascel - 413-2871 sakuraiiko@gmail.com

ACTIVITY CHAIRPERSONS

Club Photographer	Bob Satcher - 672-2110 bsatcher@astound.net
Newsletter	Tammie Snyder - 957-0604 tammie4tennis@gmail.com
Website	J. Patrick Forden - 415-205-3515 forden@percepticon.com
Newsletter Reporter	Lynne Weinshelbaum - 285-9503 lweinshelbaum@yahoo.com
Tournaments	Nicole Leong - 407-243-8645 nhlphoenix@gmail.com Sally Krapf - 415-290-6466 sallykrapf@gmail.com
USTA Leagues	Sterling Fairholm - 595-3576 sterling@fairholminsurance.com
Membership	Pam Maloney - 787-3970 pam4tenis@gmail.com
City of Walnut Creek Liaison	Glenn McBee - 984-6710 glennmcbec@gmail.com
Mixed Doubles Leagues	Nicole Leong - 407-243-8645 nhlphoenix@gmail.com
Doubles League	Garvin Tom - 209-696-5445 gtom12@hotmail.com
Summer Singles	Cameron Coltharp - 510-717-2107 ccoltharp@telecarecorp.com
WCRC Leagues Gift Coordinator	Priyanka Holmes - 609-647-3326 priyanka.holmes@gmail.com
Social Media Coordinator	Garvin Tom - 209-969-5445 gtom12@hotmail.com

THE PRESIDENT'S REPORT

Hello WCRC Members!



Sally Krapf
2020 WCRC President

Last month we held the WCRC Mixed Doubles tournament where we had windy weather, great matches, and some amazing food. Thanks to everyone who helped run the desk and kept the tournament

running smoothly all weekend! Thank you to all those who participated and came to watch the matches, it was a lot of fun! Check out the highlights and winners on pages 7-13)

We are currently in our Winter Doubles League season; are you playing? This is a great opportunity to pair up with another member and play some fun matches! We especially need players for Men 3.0, Men 4.5 and Women 4.5. Last day for match play is May 22nd with the tournament May 29-31.

Speaking of the month of May; save the date for our annual Calcutta Tournament on May 9th with the party/bidding on May 8th. This tournament is very popular with limited availability; more details to come later!

Congratulations to Cara Mia Barnacascel's 7.0 team for making it to Mixed Sectionals!

See you on the courts!

Sally Krapf



NEW MEMBERS

Welcome to Our **27** New Members
Current Membership: **1218**

Corazon Bellamy	Pittsburg	2.5	Ron Morris	Lafayette	n/a
Paul Bernardini	Concord	3.5	Severine Morris	Lafayette	n/a
James Branch	Walnut Creek	3.5	Christopher Nichols	Orinda	4.0
Maxime Charlebois	Danville	5.0	Rick Overstreet	Danville	4.5
Nicole Cring	Pleasanton	4.0	Amy Palmer	Alamo	4.0
Nga Gross	Danville	3.5	Pete Palmer	Alamo	4.5
Bel Guzman	San Ramon	2.5	Dan Pezel	Concord	n/a
Rene Hirshberg	Danville	4.0	Kathryn Philipp	Concord	3.0
Maya Jones	Walnut Creek	3.0	Scott Philipp	Concord	4.0
Richard Jung	Pleasant Hill	3.5	Joshua Russell	Walnut Creek	3.5
Cheri Kirschenheuter	Danville	3.5	Rohan Salantry	Walnut Creek	n/a
David Loetz Sr	Walnut Creek	3.0	Jason Stout	Orinda	3.0
Ella Morris	Lafayette	n/a	Brett Williams	Walnut Creek	4.5
			Kate Willeford	Walnut Creek	2.5



Membership questions contact:
Pam Maloney at 925-787-3970 or
email at: pam4tenis@gmail.com



Lifetime Activities What's Happening at the Courts?

Winning Doubles USTA Clinics: Improving Results without changing your strokes

Winning doubles is a new way of training for league players looking to get an edge. The class is designed to give you the tools to win using the skills you have right now. Classes are built around strategies and methods that help you and your team take advantage of positioning, psychology and geometry. In other words, this program can make the difference between winning and losing the next match.

We created Winning Doubles after listening to feedback from USTA and other competitive players who felt that some classes focused too much on stroke development, which is difficult to address when in season. Winning doubles is the answer for players looking to maximize results and gain a better understanding of how to win regardless of level.

Lifetime CEO and #1 Men's National 45 player Dana Gill and our team of USPTA Elite Directors developed the curriculum by analyzing common mistakes, typical strategies and the mindset of league players from 3.0-4.0. The resulting methods produce results that are measurable in more points won by becoming a smarter doubles player. Contact Joe Noth (joen@lifetimeactivities.com) for pricing and reservations.

Classes & Camps – Sign up today! Class and camp registration is ongoing. We are also offering Spring Break and Summer Camps for Youth. You can register and preview offerings online on our website: www.lifetimeactivities.com or stop by the office.

Pass Holder Special: Swing into Spring! Bring in two racquets for stringing and get a free can of US Open Extra Duty Tennis Balls. String must be purchased from Lifetime Activities, cannot be combined with other promotions.

Visit us online at lifetimeactivities.com
or stop by the office at 1751 Heather Drive
Please call with any questions at 925-945-0105.





Tennis News



6.5 Combo Women's Team "Squeak" their way into Playoffs.

The Walnut Creek Sneaker Squeakers came in 4th place in our flight and faced the Walnut Creek HERricanes in playoffs. They beat us 3-0, but we had a fun season and enjoyed preparing for playoffs.

Photo l-r: Mary Phalon, Sally Gearhart, Cheryl Sendaydiego, Sue Carlson, Tina O'Brien, Shelley Doppe, Heather Canepa, Terri Stanfield.

Not pictured: Julie Barnato, Christine Boral, Maria Debendetti, Monica Fitzgerald, Debbie Hellman, Holly Hewes, Lisa Lamm, Lisa Leach, Bonnie Merrill, Marilyn Scully, Stacy Woodworth



Deuces Wild about playoffs

Congratulations to Cara Mia's 40+ 7.0 Mixed team "Deuces Wild" for surviving two play off matches and advance to Sectionals.

l-r: Sabrina McQueen, Brigitte Shaw, Tim Shaw, Cara Mia Barnacascel, Catherine Sampietro, Justin Snyder, Tammie Snyder, Steve Buchholz, Clark Walmer, Garvin Tom and Robert Mimaki.

Playoffs!

l-r: Kirk Iliev, Pam Owens, Darien Lum, Cara Mia Barnacascel, Sabrina McQueen, Steve Buchholz, Richelle Buchholz, Justin Snyder & Catherine Sampietro.

Not pictured: Sean Barnacascel, Jennifer Cano, Malou Matthew and Tina Sorensen.





Tennis News



7.5 Combo Women's Team Head to Sectionals!



The Walnut Creek 7.5 team captained by Lisa Italia & Becca Perez has had a competitive and extremely fun season! We had a tough regular season flight and in the end battled against our toughest competition, In Shape Vacaville, in the final round of playoffs. They brought their best lineup against our best lineup and we won 2-1 to send us to Districts. At Districts we were fortunate enough to only have 3 total matches, but that meant every one counted. On Friday we swept our opponents 3-0 and that proved to be valuable, as we lost 1-2 on Saturday. That meant we needed to win on Sunday and also needed Laguna

Creek to lose. In the end, we won, they lost so now 3 teams (Walnut Creek, Laguna Creek and Gold River) each had 2 wins and 1 loss. It came down to individual matches won and thanks to our sweep on Friday we had 6, Laguna Creek had 5 and Gold River had 4. So off to Sectionals we go! This team has been so fun to captain and play with. Almost every match has ended with our opponents congratulating us for our win and our sportsmanship...what a great dynamic...I'm so proud of us!

Photo above: Sharleen Houston, Jenn Cano, Lisa Italia, Becca Perez, Thuy Nguyen, Deidre Rubcich.

Photo at right: Natalie Ivankovich, Jenn Cano, Jenna Kim, Somi Lim, Kelly Copland, Becca Perez, Lisa Italia and Sharleen Houston.

Not pictured: Susan Aneja, Regina Hughes, Marije Kentie, Andrea Klemmbith, Julieta Leong, Kim Phillips, Dina Platon, Susan Sovik



Districts!



Tennis News



7.5 Combo Women's Team Came Close but Came up just Short at Districts.

The Walnut Creek 7.5 team captained by Tammie Snyder and Pru Pruden had a great 9-1 regular season. At districts we definitely had our hands full with three very strong teams in our flight.

We finished districts 2-2 with Sunnyvale finishing 4-0 and taking our flight. They only lost 4 sets all weekend (we gave them 3 of those losses). We played 15 different players giving everyone an opportunity to play. With Sectionals scheduled for the same weekend as Indian Wells it worked out okay since we would have had a hard time fielding teams. Thanks to our amazing supporters: Judy, Pru, Soyoung, Justin, Jim, Danny, Lena, Athena, Sally, Natalie, Kelly, Rodney, Chuck, Violeta, Cherie, Ellie, and KK as well as Elliott and Isabella Feinberg's 6.5 combo team which played at the same location.

Districts!



Friday (l-r): Natalie Chan, Pru Pruden, Heidi Belton, Miriam DeQuadros, Tammie Snyder, Lena Larionova, Athena Lofquist, Justin Snyder, Sally Krapf.

Saturday (l-r): Lena Larionova, Tammie Snyder, Violeta Franco, Pru Pruden, Heidi Belton, Athena Lofquist, Natalie Chan, Sally Krapf, Soyoung Kim

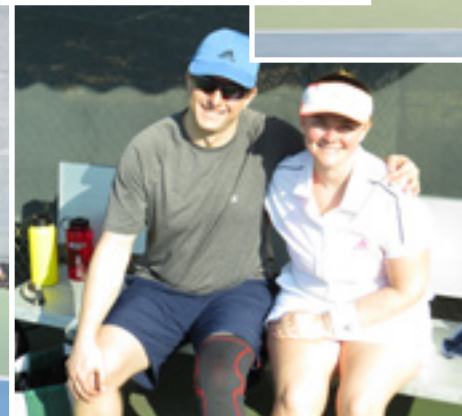
Sunday (l-r): Natalie Chan, Heidi Belton, Jennifer Caruso, Athena Lofquist, Ellie Kann, Tammie Snyder, Cherie Charbonneau, Pru Pruden.

Not pictured: Yana Bazulina, Mary Conversano, Krisztina Kohlhaas, Barbara Leivent, Melissa Steele, Christina Tapp, Caroline Zhao

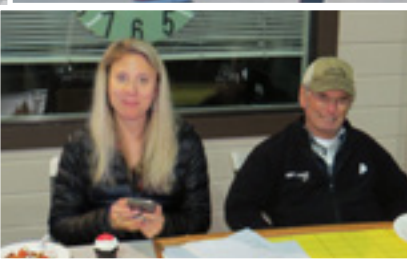
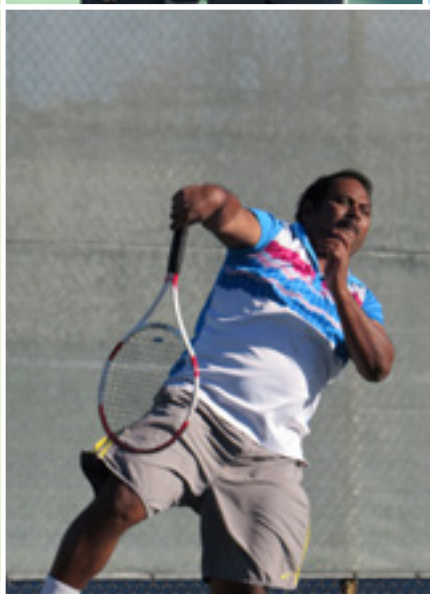


Mixed Doubles Tournament

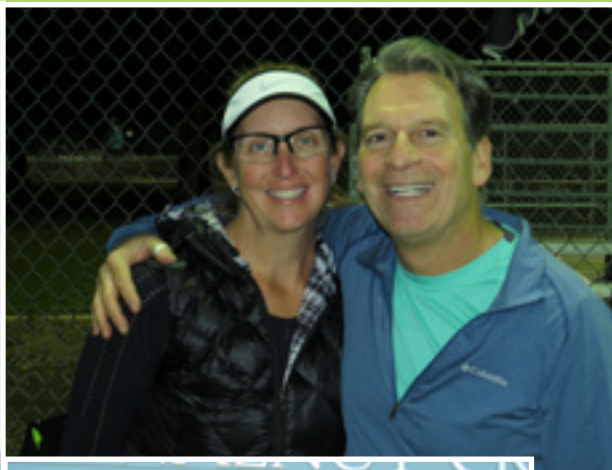












WCRC Fall Mixed Doubles League Tournament Winners & Finalists



6.0 Mixed

**Jimmy Huang & Pamela Owens def.
Gary Scott & Malou Matthew
4-6, 7-5, 7-6 (2)**

7.0 Mixed

**Brian Hennessy & Jana Bachman def.
Johanna Huck and Matt Hedges
6-2, 6-3**



8.0 Mixed

**Cameron Larner and Krisztina Kohlhaas def.
Tina Sorensen and Lloyd Hohenstein
6-4, 5-7, 6-0**

IF you play just one tournament this year...

This is your invitation to play in the Bay Area's largest and best doubles tournament. What started as a club mixer 11 years ago to help a local animal shelter in distress has now become a must play event for all bay area tennis players. Held yearly over Memorial Day Weekend, the tournament is hosted by Ruby Hill Golf Club, Livermore Valley Tennis Club and Castlewood Country Club in the beautiful Tri Valley Wine Valley. Invite a friend or family member and come play a tournament unlike any other while helping local no kill shelters at the same time.

What's New For This Year - We will be adding a men's Open with \$1000 prize money and a mixed doubles with \$400. We are hoping local pro's play and bring families and students to come watch play and enjoy the weekend together. If draw fills we will use this as priority for selection process.

Tournament Entry - Entries are now open for this year's event. Cost is a \$125 donation per player per event. If playing a second event, cost is \$100. Players may enter two events with one being a men's or women's event and one being a mixed. You may register on this website. Included in the entry fee is a really nice New Balance shirt for participants and a nice player bag. To see this years shirts, go, to the registration page. Women will receive a matching skirt if playing a second event, while men will receive a pair of shorts. There will be food, wine, beer, margaritas and drinks all weekend, so plan on coming out, hanging out and enjoying a great weekend with family and friends. Players are guaranteed two matches in each division. All entries go to 501c3 charities, so your entry fee should be tax deductible. Entries will be taken until May 18th but go up to \$150 a player after May 1st. We are hoping to have draws posted by May 22nd. Most draws will fill, so please sign up early.

Refunds for withdrawals will be issued to teams withdrawing before May 1st. No refunds will issued after that point. Refunds will be issued minus \$5.50 per person administrative fees.

Schedule - The tournament is over Memorial weekend May 23rd, 24th and 25th. Tournament draws will be published online by May 21st. Unless round robins, all tournament draws will be regular draws with back draw's for first round loser's. While we cannot guarantee it, if you have a scheduling conflict over the weekend, we will do our best to work around it. We want everyone to be able to play.

Venues - Livermore Valley Tennis Club will be the hub of tournament on Saturday and Sunday, with Ruby Hill being the hub on Monday. Over the course of the weekend, matches will be played at all three sites. Please check the draw for the site of your particular match or matches. While you may go directly to venue you are playing at, you will need to check in at the Livermore Valley Tennis Club on Saturday to get your shirts, hat and swag bag.

Juniors - As we are trying to encourage family participation, we allow juniors to play in the adult divisions. If you are not sure where they belong, touch base with us and we will help find the appropriate division for them.

Friends, Spectators and Family - Friends, spectators and family are welcome to come watch and join the fun. Daily drink and food bands can be purchased for \$15.

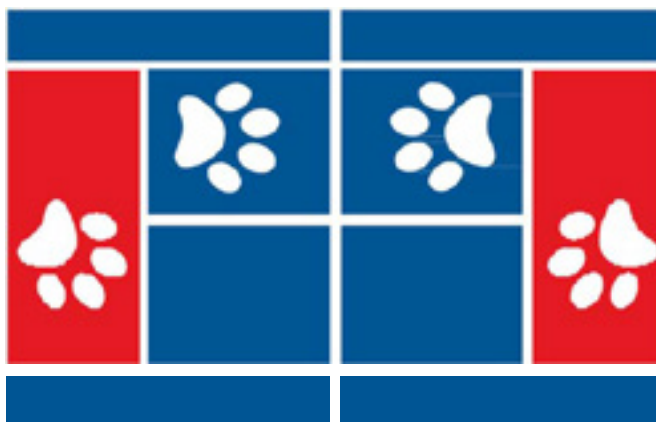
Auction - There will be silent auctions items ranging from golf, amazing venue stays, presidential suite tickets at this years us open, as well as tennis clothes. There is a link on the website for up to date list of the items that will be auctioned off. Our grand auction prize every year is an incredible heating and air conditioning system donated by our title sponsor Service Champions. If you are in the market for such a system, it will behoove you to hold off and bid at the tournament, as it is the top of the line system, at an incredible deal.

Pets - Livermore Valley Tennis Club does not allow pets, however on Day 3 at Ruby Hill feel free to bring them. Just make sure they are on a leash. Several of the shelters we support will have adoptable pets out at the tournament on the last day.

Volunteers - We are always looking for volunteers to work the tournament. If you would like to help, please contact Kevin at rubytennis2@yahoo.com. If you would like to be a sponsor or know anyone who would, that is a huge help also. The biggest way to help is to help spread the word. Tell all your friends, like us on Facebook, and get everyone you know to come and play. If you would like to get an idea of the scope of this event, visit our Facebook page to see last and past years pictures and champions. www.facebook.com/TriValleyDoublesChampionships

Questions???? - Shoot me an email, rubytennis2@yahoo.com.

SERVICE CHAMPIONS DOUBLES CLASSIC



The 9th Annual Service Champions Doubles Classic

May 23rd - 25th
Memorial Day Weekend 2020



Livermore Valley Tennis Club
The Club that offers you more!



Please join us to play the Tri Valley's premiere tennis event. This is an all doubles event for players of all ability levels to benefit Valley Humane Society and other local no-kill animal welfare organization.

DIVISIONS:

Men's Doubles Combination	6.0, 7.0, 8.0, 9.0, 10 and open
Women's Divisions Combination	5.0, 6.0, 7.0, 8.0, 9.0+
Mixed Doubles Combination	6.0, 7.0, 8.0, 9.0, and 10.0+



*Teams will be guaranteed two matches. You may play in two events.
One mixed and one men's or women's.*

Entry Information: To sign up go online to: www.tennis4dogs.com

Entry deadline is May 18th: If you would like to enter but do not have a partner, send an email to: rubbytennis2@yahoo.com and we will find a partner for you.

Entry is \$125 per person (\$250 per team) until Friday May 1st. Register Early! After 5/1/2020, entry fee will be \$150 per person/\$300 per team.

Draws and Scheduling:

The draws will be posted online on May 22nd. We want everyone to play so we will be as flexible as possible with scheduling. The bulk of the play will be at Livermore Valley Tennis Club with satellite courts at Ruby Hill Golf Club and Castlewood Country Club, if needed. There will be food and wine, as well as prizes for division winners.

Location:

Please check in for all matches at the courts at Livermore Valley Tennis Club, located at 2000 Arroyo Road, Livermore. If your matches are at an alternate site, directions will be provided.

Valley Humane Society:

Valley Humane Society creates a brighter future for cats and dogs by encouraging and strengthening the bond between people and pets. VHS rescues and rehabilitates companion animals, champion's responsible caretaking, shares pets' soothing actions with people in need of comfort, and supports and preserves existing pet-guardian relationships. For information, please visit valleyhumane.org

Dress Policy:

Please no marking dark soled shoes.
Questions or for more information, please see our website:

www.tennis4dogs.com

or contact: tournament director Kevin Pope 925-922-0415
or email: rubbytennis2@yahoo.com



WCRC Men's & Women's 2020 Winter Doubles League Registration Form (Also on-line at www.wcrc.net)

PLAYER 1

PLAYER 2

Name	_____	_____
Mailing Address	_____	_____
City	_____	_____
ZIP Code	_____	_____
Home Phone	_____	_____
Work or Cell Phone	_____	_____
E-mail address	_____	_____
NTRP level	_____	_____

WCRC Member? ☐ YES ☐ NO

☐ YES ☐ NO

Division for which you are registering (please check one): NTRP (check one)

- ☐ Men's 3.0
- ☐ Men's 3.5
- ☐ Men's 4.0
- ☐ Men's 4.5/5.0

- ☐ Women's 2.5/3.0
- ☐ Women's 3.5
- ☐ Women's 4.0
- ☐ Women's 4.5/5.0

Registration Fees (note - if you are interested in joining the Racquet Club, please download a membership form from <http://www.wcrc.net/about/membership.htm> and return it with this application):

- * \$50 per team (both Walnut Creek Racquet Club Members) • \$40 per team for on-line registration
- * \$60 per team (one WCRC Member, one non-member) • \$50 per team for on-line registration
- * \$70 per team (both non WCRC members) • \$60 per team for on-line registration

On-Line Registration will remain open until **April 30, 2020**. If you would like to register by mail, return this form by **April 30, 2020** with a check for registration fees (payable to Walnut Creek Racquet Club **NOT** WCRC) to: Walnut Creek Racquet Club, 224 Farm Ln., Martinez, CA 94553.

Questions? Call Garvin Tom at (209) 969-5445 or via e-mail gtom12@hotmail.com

League Information: Players may enter the WCRC Winter Doubles League in more than one division (i.e. 3.0 and 3.5), as long as he/she is playing at or above his/her level. If a player is entering in more than one division, he/she may enter with the same partner or a different partner but may not enter with different partners at the same level.

The league runs from January 1, 2020 - May 22, 2020. The tournament will run the weekend of May 29-31, 2020.

Once League play is complete and registration for the end-of-League Tournament begins, a player may **NOT** enter the Tournament at more than one level. **No exceptions will be made.**

As an effort to get to know our membership the Board has decided to start a new monthly column "Member Spotlight". We will be interviewing WCRC members and getting to know them. This article will help us find out how they got introduced to tennis, their background, any favorite memories, etc. We hope you enjoy this new commentary.

Although Delaware was one of this country's 13 colonies, it doesn't seem like Delaware gets much recognition. That's changing because the incoming President of WCRC Sally Krapf is a Delawarian we all recognize.

Sally was born and raised in Delaware, where she was such a rebel-rouser that her parents decided an all girls Catholic school was what she needed. Fortunately, it was a good move and she gave up her hell-raising ways for track and lacrosse. Well, that's the story she's telling.

Living in Maine with a boyfriend who took a job in San Francisco, Sally moved to San Francisco in 2005. Just four months after arriving, she and the boyfriend split so she found a studio apartment, in the City, for \$850 a month! At the time, she was working in Food & Beverage for the Park Hyatt. The charm of living in SF lasted a few years but in 2007 made the move to the burbs.

Sally says the main draw was convenience, like a washer and dryer instead of the laundromat, swimming pools where she could wear her bikini and BART made commuting bearable. She quickly realized she needed to do something fun and, of course, tennis was the ticket.

Valley Vista is the first place Sally played. Being naturally athletic, she just picked up a racquet and started playing. Right, no lessons! In 2011 she started USTA as a 3.0, playing mostly singles. By 2012 Sally's Valley Vista Women's team made it to Nationals and it was official, she was hooked on tennis.

It took a few years but by 2016, she moved to play tennis out of WCRC on Moe Satcher's teams.

She really enjoys playing the WCRC leagues each year and she and her doubles partner, Pru, have played the Winter Doubles League for several years and won their division once.

If it sounds like Sally has made a home at WCRC, it's because she has. She has two brothers that live on the East Coast. Her Dad and step-Mom are in Florida and while she loves to visit, this is home for now. Sally is Mom to Truffles, a rescue doggie she's had for about four years. Truffles sister, Casca, comes for frequent visits and both can regularly be seen at Heather where they know they can get free food.

Many of you know that Sally had thyroid cancer in 2017 and she attributes identifying it because she's a self-professed hypochondriac. She even told a friend she had it before it was diagnosed. She watched a YouTube video to check herself! Sally is currently taking a sabbatical from her work in residential property management. Over the winter she traveled to France with her family, then to Munich with Sean and Cara Mia Barnacascel and the UK and Italy with a cousin.

Sally's been able to create family through tennis because she's Sally; tough as nails, sweet as pie.



ARE YOU IN THE **BACK PAIN CLUB?**

**BE
SEEN
TODAY!**

Dr. James Dietrick, D.C.



DISC
CENTERS of AMERICA™

SPINAL DECOMPRESSION
PROVIDES NON-SURGICAL GENTLE
RELIEF TO 1000'S OF PATIENTS.
CALL TODAY TO SEE IF YOU QUALIFY!

CALL FOR YOUR FREE REPORT!

- 👉 **BACK PAIN - LEG PAIN**
- 👉 **NUMBNESS - TINGLING**
- 👉 **HERNIATED - BULGING DISCS**

**CALL
NOW!**

**670 GREGORY LANE, SUITE C
PLEASANT HILL, CA 94523**

925-395-0252

www.ContraCostaDiscCenters.com

FREE

**BACK EXAM &
MRI REVIEW
\$150 VALUE**

Includes Doctor
Consultation, Exam &
Review of Findings

* With Flyer.

CALENDER OF EVENTS

2020

Mar

Mar 2	USTA 65+ Season Opens
Mar 2	USTA 18+ Team Registration Closes
Mar 6-8	USTA 40+ Mixed Districts/Sectionals
Mar 15	USTA 18-39 Coed Season Closes
Mar 15-17	USTA Combo Sectionals
Mar 22	USTA 55+ Mixed Season Closes
Mar 26-29	USTA 18-39 Coed Playoffs

Apr

Apr 2-5	USTA 55+ Mixed Playoffs
Apr 5	USTA 40+ Season Closes
Apr 6	USTA 18+ Season Opens
Apr 10-12	USTA 55+ Sectional/Nationals
Apr 13	USTA 55+ Team Registration Opens
Apr 13	USTA 18+ Mixed Team Registration Opens
Apr 16-19	USTA 40+ Playoffs Round 1
Apr 22	WCRC Summer Singles League Opens
Apr 23-26	USTA 40+ Playoffs Round 2

May

May 1-3	USTA 40+ Districts
May 8	USTA 65+ Season Closes
May 8	WCRC Calcutta Auction
May 9	WCRC Calcutta Tournament
May 22	WCRC Winter Doubles Season Closes
May 15-17	USTA 40+ Sectionals
May 18	USTA 55+ Team Registration Closes
May 18	USTA 18+ Mixed Team Registration Closes

TREASURER'S REPORT

Cara Mia Barnacascel
as of January, 2020



Walnut Creek Racquet Club Profit and Loss

January 1 - February 28, 2020

	Total
Income	
League Dues	0.00
Winter Doubles League	867.90
Total League Dues	\$867.90
Membership Dues	1,904.34
Total Income	\$2,772.24
Gross Profit	\$2,772.24
Expenses	
Board Meeting	68.38
District Fees	270.00
Gifts	67.14
League Expenses	0.00
Fall Mixed League Expenses	1,164.27
Summer Singles Expenses	682.75
Total League Expenses	\$1,847.02
Website	129.85
Total Expenses	\$2,382.39
Net Operating Income	\$389.85
Net Income	\$389.85

Balance as of January, 2020

\$49,298.66



Gretchen Caulfield
and Doug Fish
celebrate their win
at Sectionals.

photo by Bobby Satcher

Winter Doubles League - Standings

Men's

3.5	W	L
Tseng/Lee	2	0

4.0		
Tabtab/Spencer	2	0
Maier/Francis	2	0

4.5		
No matches played		

Women's

3.0	W	L
Hornbrook/Troncoso	1	0

3.5		
Pruden/Krapf	4	0

4.0		
Huck/Steele	1	0
Blackman/Kim	1	0
Zalewski/Hirsberg	1	0
Kim/Larionova	1	0

4.5/5.0		
No matches played		