



THE COURT REPORTER

Newsletter of the Walnut Creek Racquet Club

March, 2021



Doubles Tennis is back...with masks!

Walnut Creek Racquet Club

P.O. Box 4574 • Walnut Creek, CA 94596
(925) 945-0105 • www.wcrc.net

2021
Board

OFFICERS

President	Sally Krapf - 415-290-6466 sallykrapf@gmail.com
Vice President	Tammie Snyder - 957-0604 tammie4tennis@gmail.com
Secretary	Deanna Fong - 952-9935 deanna_fong@yahoo.com
Treasurer	Cara Mia Barnacascel - 413-2871 sakuraiiko@gmail.com

ACTIVITY CHAIRPERSONS

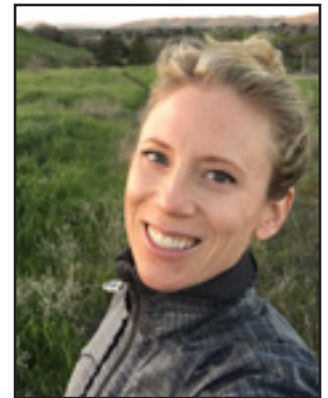
Club Photographer	Bob Satcher - 672-2110 bsatcher@astound.net
Newsletter	Tammie Snyder - 957-0604 tammie4tennis@gmail.com
Website	J. Patrick Forden - 415-205-3515 forden@percepticon.com
Calendar/ Newsletter Reporter	Lynne Weinshelbaum - 285-9503 lweinshelbaum@yahoo.com
Tournaments	Nicole Leong - 407-243-8645 nhlphoenix@gmail.com Sally Krapf - 415-290-6466 sallykrapf@gmail.com
USTA Leagues	Tammie Snyder - 957-0604 tammie4tennis@gmail.com
Membership	Pam Maloney - 787-3970 pam4tenis@gmail.com
City of Walnut Creek Liaison	Glenn McBee - 984-6710 glennmcbee@gmail.com
Mixed Doubles Leagues	Lynne Weinshelbaum - 285-9503 lweinshelbaum@yahoo.com
Doubles League	Garvin Tom - 209-696-5445 gtom12@hotmail.com
Summer Singles	Cameron Coltharp - 510-717-2107 ccoltharp@telecarecorp.com
WCRC Leagues Gift Coordinator	Priyanka Holmes - 609-647-3326 priyanka.holmes@gmail.com
Social Media Coordinator	Garvin Tom - 209-969-5445 gtom12@hotmail.com

THE PRESIDENT'S REPORT

Happy March!

Dear Members,

Well we made it the through another month! I don't know about you but I'm so happy to see that doubles is back at Heather Farm! Masks are still required for all players to wear during doubles play.



Sally Krapf
2021 WCRC President

We are looking to open the Winter Doubles season within the next few weeks now that doubles is permitted at HF. This is always a popular league and a great way to meet new players and play with friends. Depending on COVID restrictions we may or may not have an end of season tournament. Check out the registration form found on page 6 for more details. You can also save money by signing up on line **after March 22nd** at www.wcrc.net.

Speaking of tournaments we will not have the annual Calcutta in our usual month of May. We are looking at dates later in the year and will keep you posted.

If you are looking to play some singles tennis the WCRC has our WING League. (**W**inter and **spr**i**NG** singles. You can sign up on line at www.wcrc.net.

Sally Krapf

M EMBERSHIP



Membership questions contact:
Pam Maloney at 925-787-3970 or
email at: pam4tenis@gmail.com

Welcome to Our 2 New Members Current Membership: 1262

Adrian Araza	Pleasant Hill	3.5
Dee Hopfenspirger	Benicia	3.0



Lifetime Activities

What's Happening at the Courts?

NEW OPERATING HOURS AT WCTC. 11/2/20-3/14/21)

Monday – Friday: 9am-12:30pm, 2:30-9pm (closed 12:30-2:30pm)

Saturday & Sunday: 8am-5pm

Universal Tennis Rating (UTR)

Starting in 2021, Lifetime Activities has partnered with UTR to bring a more dynamic rating system to our lessons and to our players. For more information on what UTR is and how its calculated please visit their website at www.myutr.com/.

Operating Hours

On 3/15/2021 we will be reverting back to our old operational hours.

Monday-Friday 8am-10pm

Saturday & Sunday 8am-8pm

Northgate Courts Update

During the Winter the lower four courts at Northgate will remain closed Monday-Friday, and will be opened for public use on Saturday-Sunday from 8am to sunset. For any questions regarding the court closure for the Winter feel free to email Laithk@lifetimeactivities.com. Thank you for your understanding.

Doubles Is Back at Heather!

We are happy to have doubles tennis back at Heather Farms. Mask are required to be worn properly over the nose and mouth during doubles play. Thank you all for your support and we look forward to seeing you out on the court soon.

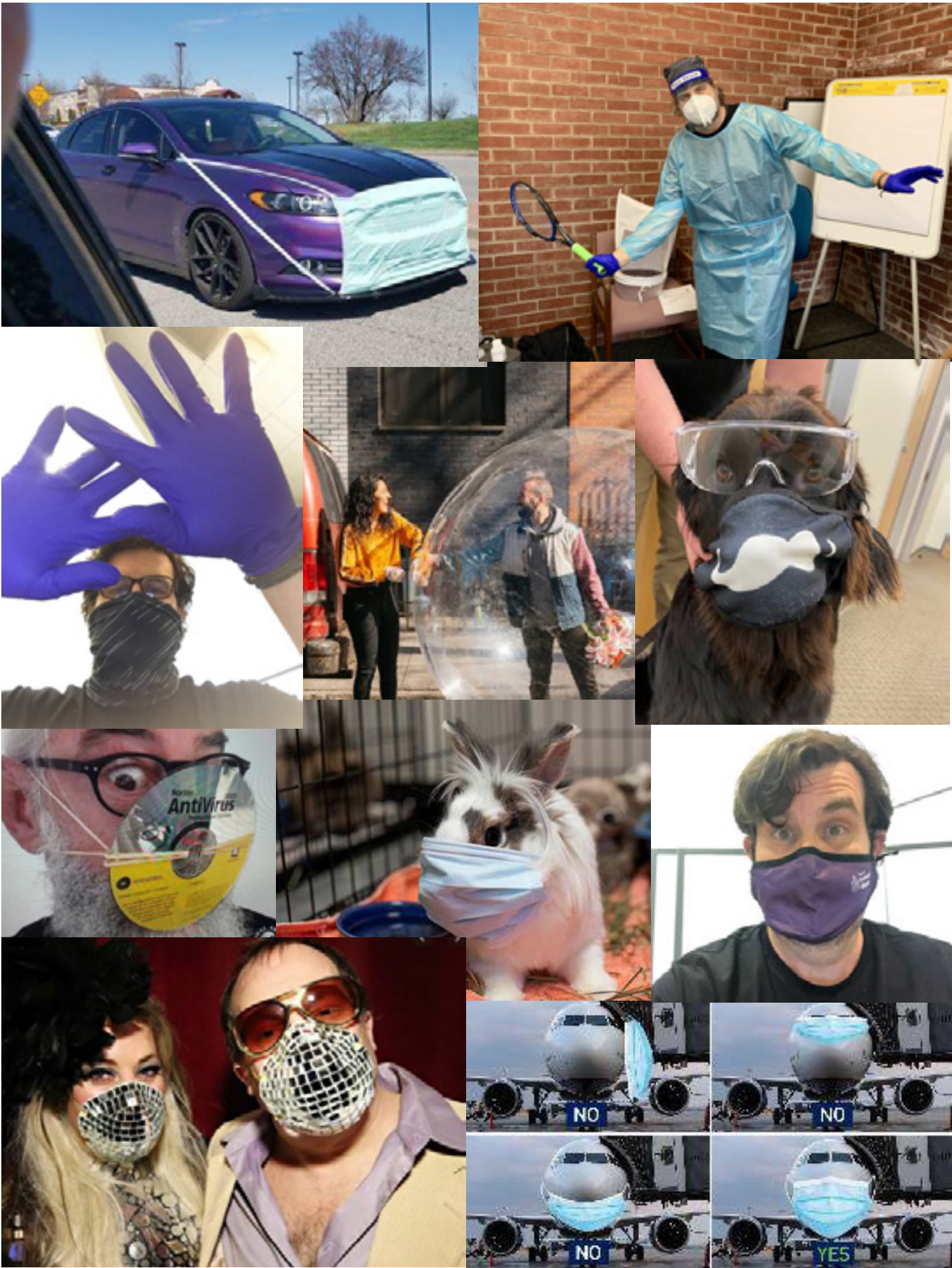
Youth and Adult Spring Classes

Sign up for our Spring Session Classes starting on 2/24/2021. To look at the current schedule and to register for classes, please visit our website at www.Lifetimeactivities.com.

**Visit us online at www.lifetimeactivities.com or stop by the the office at 1751 Heather Drive.
Please call with any questions at 925-945-0105.**

Thanks to Cameron Coltharp for his collection of covid photos





WCRC Men's & Women's 2021 Winter Doubles League Registration Form (Also on-line at www.wcrc.net)

PLAYER 1

PLAYER 2

Name _____

Mailing Address _____

City _____

ZIP Code _____

Home Phone _____

Work or Cell Phone _____

E-mail address _____

NTRP level _____

WCRC Member? ☐ YES ☐ NO

☐ YES ☐ NO

Division for which you are registering (please check one): NTRP (check one)

☐ Men's 3.0
☐ Men's 3.5
☐ Men's 4.0
☐ Men's 4.5/5.0

☐ Women's 2.5/3.0
☐ Women's 3.5
☐ Women's 4.0
☐ Women's 4.5/5.0

Registration Fees (note - if you are interested in joining the Racquet Club, please download a membership form from <http://www.wcrc.net/about/membership.htm> and return it with this application):

* \$50 per team (both Walnut Creek Racquet Club Members) • \$40 per team for on-line registration

* \$60 per team (one WCRC Member, one non-member) • \$50 per team for on-line registration

* \$70 per team (both non WCRC members) • \$60 per team for on-line registration

If you would like to register by mail, return this form with a check for registration fees (payable to Walnut Creek Racquet Club **NOT** WCRC) mail to: Walnut Creek Racquet Club, 224 Farm Ln., Martinez, CA 94553.

Questions? Call Garvin Tom at (209) 969-5445 or via e-mail gtom12@hotmail.com

League Information: Players may enter the WCRC Winter Doubles League in more than one division (i.e. 3.0 and 3.5), as long as he/she is playing at or above his/her level. If a player is entering in more than one division, he/she may enter with the same partner or a different partner but may not enter with different partners at the same level.

The league runs from March 22, 2021 - July 30, 2021. The tournament TBD based on Covid protocols.

Once League play is complete and registration for the end-of-League Tournament begins, a player may **NOT** enter the Tournament at more than one level. **No exceptions will be made.**

CALENDER OF EVENTS 2021

**ALL USTA
Tennis Leagues
Suspended Until
Further Notice**



TREASURER'S REPORT

Cara Mia Barnacascel
through December, 2020



Walnut Creek Racquet Club
Profit and Loss
January - December, 2020

	Total
Income	
Advertising Income	492.39
League Dues	
Fall Mixed Doubles League	1,436.21
Summer Singles League	3,839.79
WING singles	357.58
Winter Doubles League	-800.33
Total League Dues	\$4,833.25
Membership Dues	9,823.81
Total Income	\$15,149.45
GROSS PROFIT	\$15,149.45
Expenses	
Board Meeting	409.40
Court Usage Fees	35.00
District Fees	585.00
Equipment	173.99
Filing Fees	20.00
Gifts	232.04
Interest Expense	50.00
League Expenses	
Total Fall Mixed League Expenses	\$2,554.36
Total Summer Singles Expenses	\$1,595.37
Total League Expenses	\$4,149.73
Office Supplies	388.75
Post Office Box	134.00
Total Printing and Reproduction	\$247.77
Rental Deposit	-500.00
Sectionals Fees	90.00
Total Website	\$5,261.70
Total Expenses	\$11,277.38
Net Operating Income	\$3,872.07
Other Income	
Total Other Income	\$252.36
Net Other Income	\$252.36
Net Income	\$4,124.43
Balance through December, 2020	\$50,226.22

Tennis Word Find

E V E U C N I M X B Z I D T W F W Z R H B Y Q X
X R U D S P V F W V A C P W M I R O D C W O X K
Q C N Y R E N I L E S A B V S X T H Y B O W S V
I M A V R Q U T T C F T Z H T Z U P J L I U D Z
K U C F I F P E I K S O Q V R Y O L L L L A R O
W E Z G S E C N R U C V B H I O A L S W P A H T
P I M A P R J D G D U O U C N S A O N O H F R K
X H V Y S P E N K T F A C I G B N R N O Q M N Y
V V O L L E Y U X V W R B Z S O I O E Y K Y Y N
B W K U F R V O Q A C Y A D D M S C I E E O E U
I Y U O F O G B M I V O C M N R S N D F C P Z J
L W I G T N K E E G M F K C E A Z R U G O G L H
P U H X T K E R W U J U H L J Y H Q K N D C Y I
R V N R F N Q T H J W L A Q X R E E A N O B Z X
D W G B X U E P F M W D N G H B Z I R A L B Z T
R L R V B V X M W H M T D W Q V L M C O Y I L H
A E E Z R Y N W D W X R H D T A J H S E F P D W
C B Y E Z U N H J E A O E C R I W K Y M X W I T
K G S Y W W I N I W O W L T Y F H B D W A E X M
E S U A T T A P A X O I S J G V C P U O L S P V
T C C E B O S J H D B U L I F A F R O J Y P H N
S Z L W X D L K Z Z A O T J B G V V K T R S W I
Y V P J Z K R W O T E H S H R T Z O G A M E Q P
H S L R H W Q E J M B E B A P L A M O H O Q U N

Australian Open

Smash

Rebound net

Tophit

Wilson

Frame

Strings

Net

Baseline

Serve

Volley

Forehand

Coach

Danny

Court

Hit

Game

Rally

Ball

Racket

Backhand