

THE COURT REPORTER

Newsletter of the Walnut Creek Racquet Club

February, 2023



**Keane Tarrosa serving
during the Summer
Singles Tournament!**

Photo by Rebecca Kay

Walnut Creek Racquet Club

P.O. Box 4574 • Walnut Creek, CA 94596
(925) 945-0105 • www.wcrc.net

2023
Board

OFFICERS

President	Garvin Tom - 209-969-5445 gtom12@hotmail.com
Vice President	Tammie Snyder - 202-7000 tammie4tennis@gmail.com
Secretary	Deanna Fong - 330-8295 deanna_fong@yahoo.com
Treasurer	Cara Mia Barnacascel - 413-2871 sakuraiiko@gmail.com

ACTIVITY CHAIRPERSONS

Club	Bob Satcher - 672-2110 bsatcher@astound.net
Photographer	
Newsletter	Tammie Snyder - 202-7000 tammie4tennis@gmail.com
Website	J. Patrick Forden - 415-205-3515 forden@percepticon.com
Newsletter Reporter	Ian McLaughlin - 510-759-9633 iemclaughlin@yahoo.com
Tournaments	Sally Krapf - 415-290-6466 sallykrapf@gmail.com
Membership Compliance	Kayla Baier - 707-628-7206 kaylahornbrook@gmail.com Rebecca Kay - 415-497-4274 rebeccacelotti@gmail.com
USTA Leagues	Tammie Snyder - 202-7000 tammie4tennis@gmail.com
Membership	Pam Maloney - 787-3970 pam4tenis@gmail.com
City of Walnut Creek Liaison	Glenn McBee - 984-6710 glennmcbee@gmail.com
Mixed Doubles League	Lynne Weinshelbaum - 285-9503 lweinshelbaum@yahoo.com
Doubles League	Garvin Tom - 209-969-5445 gtom12@hotmail.com
Summer Singles	Steve Lehmer - 925-285-0028 lehmer@pacbell.net
WING Singles	Cameron Coltharp - 510-717-2107 ccoltharp@telecarecorp.com
WCRC Leagues Gift Coordinator	Priyanka Holmes - 609-647-3326 priyanka.holmes@gmail.com
Social Media Coordinator	Garvin Tom - 209-969-5445 gtom12@hotmail.com

THE PRESIDENT'S REPORT

Happy February!

After a soggy start to the new year I hope most of you are taking advantage of the break from the rain as we dry out. While we do need the rain, it did have a significant effect on the tennis calendar. Combo Sectionals was postponed to February 3-5, so again congratulations to all our combo teams who are playing this upcoming weekend. Can you believe that every level on the women's side has a team representing the WCRC? And there's my 8.5 men's team as well. LOL! Go Creek!



Garvin Tom
2023 WCRC President

Because Sectionals got moved out to the beginning of February, we are also postponing our Fall Mixed tournament to a later date (to be determined) and extending the Fall Mixed season. We will update you on the tournament once we have a date scheduled. In other WCRC league news, both our WING Singles and Winter Doubles seasons are underway. You can register for either of these leagues at www.wcrc.net.

And, of course, we have plenty of USTA action going on. We are finally getting some matches in for the Adult 40+ and Mixed 18+ leagues after a few weeks of rainy weather. I know our captains are working hard with Lifetime to reschedule any rained-out matches, so help them out and let them know your availability if they ask you. Believe me, you'll be making their lives easier when you do.

The Adult 65+ season is also starting this month, and player registration for the Adult 55+ and Adult 18+ are now open. I can't believe we're talking about that already.

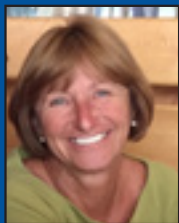
See you on the courts.

Garvin Tom

M EMBERSHIP

Welcome to Our 31 New Members
Current Membership: 1180

Sachidanand Alle	San Ramon	3.5	Geordie Hawkins	Danville	4.0
Lea Baldacci	Alamo	3.5	Ramya Jayaraman	Danville	3.0
Dan Beaver	Clayton	3.0	Susan JunFish	Oakland	4.0
Courtney Bock	Fairfield	3.5	Mickie Kerr	Alamo	3.0
Christina Dalton	Brentwood	3.5	BarbaraLeivent	Walnut Creek	3.5
Jessica Datte	Concord	5.0	Drew Morrell	Greenbrae	3.0
Peter Dave	Walnut Creek	3.0	King Ng	Lafayette	3.5
Christi Deakin	Alamo	3.5	Julia Overs Bates	Lafayette	4.5
Melanie Espejo	Martinez	3.0	Gail Pearson	Lafayette	4.0
Mihaela Farnholtz	Alamo	3.0	Tracy Pham	Milpitas	3.0
Paz Garrucho	San Leandro	4.0	Steven Pugsley	San Ramon	4.0
Nick Greenwald	Walnut Creek	4.5	Diana Rosdahl	Danville	3.0
			Gary Soto	Berkeley	3.5
			Santi Soumpholphakdy	Oakland	4.5
			Wendy Thomas	Alamo	3.0
			Kari Trimble	Lafayette	3.0
			Nanny Tunnell	Alamo	3.5
			Gavin Wall	Kensington	4.5
			Jason Wong	Castro Valley	5.0



Membership questions contact:
Pam Maloney at 925-787-3970 or
email at: pam4tenis@gmail.com

Lifetime Activities

What's Happening at the Courts?

OPERATING HOURS AT WCTC

Monday – Friday: 8am-10:00pm • Saturday & Sunday: 8am-8pm

Single Use Rentals and Activities on Court 8 - Please note that on 3/1 Lifetime Activities will be foregoing ball machine rentals and 1-on-1 private lessons. More complete information can be found in our main office.

Spring 2023 Class Schedules -Lifetime Activities Spring 2023 Class Schedule is set to be released on **Monday, 2/6**. Youth Registration will start on **2/14 @ 9:00am**. Adult Registration will start on **2/15 @ 9:00am**. You can register at our main office or by going online to lifetimeactivities.com.

Warm up time before USTA Match - Please note that per USTA match rules, you are guaranteed 5 minutes of warm up time before your match. This time is already built into your match reservation time. If you would like to warm up on the courts before your match, you may do so free of charge up to 15 minutes before your match starts, as long as there are open courts available. If you would like to have longer than 15 minutes for a warm up, then you will need to book a reservation or walk on court and the standard \$6 fee becomes applicable. If you have a Lifetime Activities pass, then you will still need to book a warm up court, but the charge is not applicable to you.

Walk-On Court Process - Walk on courts are first come first serve only. In order to obtain a walk on court, you must come to the front desk with at least 1 other person that you will be playing with before you will be granted a court. Your reservation time will start at the time that you are granted the court, i.e. walk on court reservation time slots may be booked outside of the reservable court time slots. Please note that you are only allowed to book 1 court under your name per day. If you have already booked a reservable court under your name, then you will not be able to book a walk on court under your name during that same day. We thank you for your cooperation and understanding. If you have any questions about the walk-on court process, you can email the General Manager at davidr@lifetimeactivities.com.

Visit us online at www.lifetimeactivities.com or stop by the the office at 1751 Heather Drive.
Please call with any questions at 925-945-0105.

Member Spotlight

Breaking Down Silos:

Sean Barnacascel

Interview and article by Ian McLaughlin

As an effort to get to know our membership the Board has decided to have a monthly column "Member Spotlight". We will be interviewing WCRC members and getting to know them. This article will help us find out how they got introduced to tennis, their background, any favorite memories, etc. We hope you enjoy this commentary.

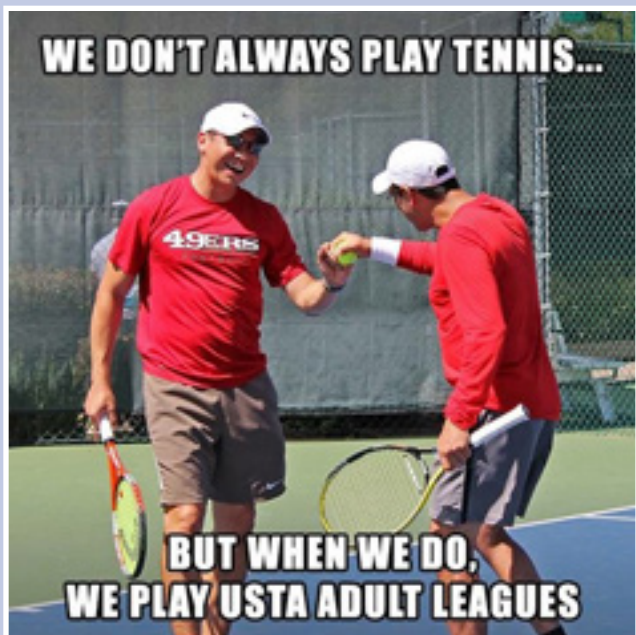
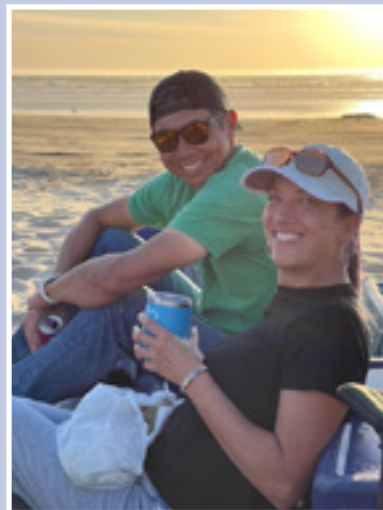
To longtime WCRC member and USTA captain Sean Barnacascel, it's an honor to be able to introduce new people to the wonderful community of WCRC players and to welcome them into the ever growing family we've created at the club.

Although he's no longer captaining USTA teams, Sean did so for many years and as one of the most gregarious and joyful people you'll ever meet, Sean's teams have always been known for the colorful and descriptive nicknames he bestows upon his team members. Sean's personal moniker is "orange crush" because of his preferences for the color orange and the soda with the same name, along with his propensity to crush balls at the net, but he began giving his players nicknames both as a way to show his appreciation and to subtly indicate what he noticed in their tennis game. And simply to make everyone feel welcome, which is one of Sean's greatest strengths.

Interestingly, Sean's parents met in Taiwan and he was born there and began a gradual process of emigrating to the United States as an elementary school-age child in 1984. He didn't know much English when he initially came to the U.S., but he learned through school in various cities around northern California, along with watching the classic TV shows of our youth. And finally, he picked up a lot of the language through the game of basketball, which has always been his primary sporting passion.

After a lifetime of playing mostly basketball and badly dislocating his ankle as an adult in a pickup hoops game, Sean's neighbor KK, himself a prolific WCRC player and captain, introduced Sean to USTA tennis around 2010. Sean readily took to the new sport because many of the movements are similar to those he honed through years of playing basketball, and he could still play tennis after his ankle dislocation. He entered USTA league play on one of KK's "dream teams" and eventually started captaining himself with teammate John Sovik in part to break down some of the silos that traditionally existed among the various teams at WCRC, and his efforts have led to significant crossover among the USTA teams at Heather Farm as players meet new teammates, new captains, and new friends.

Sean's wife Cara Mia is a steady presence at WCRC herself, playing and captaining and serving on the Board of Directors. She's also been a steady presence in Sean's



life dating back to their days together as students at Ygnacio Valley High School, and the self-described “nerdy” couple work together in the analytics department at Wells Fargo Bank. Sean and Cara Mia share a joie de vivre and love to explore the best our world has to offer through traveling, seeking out new experiences, and fine food and drink. And there’s never a shortage of fine food and drink at WCRC.

When asked what he remembers most fondly about his career with WCRC, Sean says “it’s all about the people.” We are blessed to be part of a strong and supportive community at WCRC, and because people like Sean look to break down silos, we become more unified and stronger with each passing season. ❖





WCRC Men's & Women's 2023 Winter Doubles League



Available Divisions

(you are eligible to play your level as well as one level above your current USTA rating)

- | | |
|--|--|
| <input type="checkbox"/> Men's 3.0 | <input type="checkbox"/> Women's 2.5/3.0 |
| <input type="checkbox"/> Men's 3.5 | <input type="checkbox"/> Women's 3.5 |
| <input type="checkbox"/> Men's 4.0 | <input type="checkbox"/> Women's 4.0 |
| <input type="checkbox"/> Men's 4.5/5.0 | <input type="checkbox"/> Women's 4.5/5.0 |

League Cost

- \$40 per team (both Walnut Creek Racquet Club Members)
- \$50 per team (one WCRC Member, one non-member)
- \$60 per team (both non-WCRC members)

League Information

Players may enter the WCRC Winter Doubles League in more than one division (i.e., 3.0 and 3.5), as long as he/she is playing at or above his/her level.

If a player is entering in more than one division, he/she may enter with the same partner or a different partner but may not enter with different partners at the same level.

The league runs from January 1, 2023 - May 26, 2023.

The tournament is scheduled for June 9-11, 2023.

Once league play is complete and registration for the end-of-League Tournament begins, a player may **NOT** enter the Tournament at more than one level.

No exceptions will be made.

**Questions? Call Garvin Tom at (209) 969-5445
or via e-mail gtom12@hotmail.com**

**Find a partner
League opens
January 1st**



WCRC Men's & Women's 2023 Winter Doubles League Registration Form (Also on-line at www.wcrc.net)

PLAYER 1

PLAYER 2

Name	_____	_____
Mailing Address	_____	_____
City	_____	_____
ZIP Code	_____	_____
Home Phone	_____	_____
Work or Cell Phone	_____	_____
E-mail address	_____	_____
NTRP level	_____	_____

WCRC Member? ☐ YES ☐ NO

☐ YES v NO

Division for which you are registering (please check one): NTRP (check one)

- ☐ Men's 3.0
- ☐ Men's 3.5
- ☐ Men's 4.0
- ☐ Men's 4.5/5.0

- ☐ Women's 2.5/3.0
- ☐ Women's 3.5
- ☐ Women's 4.0
- ☐ Women's 4.5/5.0

Registration Fees (note - if you are interested in joining the Racquet Club, please download a membership form from <http://www.wcrc.net/about/membership.htm> and return it with this application):

* \$ 50 per team (both Walnut Creek Racquet Club Members) • \$ 40 per team for on-line registration

* \$ 60 per team (one WCRC Member, one non-member) • \$ 50 per team for on-line registration

* \$ 70 per team (both non WCRC members) • \$ 60 per team for on-line registration

If you would like to register by mail, return this form with a check for registration fees

(payable to Walnut Creek Racquet Club NOT WCRC) mail to:

Walnut Creek Racquet Club, P.O. Box 4574, Walnut Creek, CA 94596.

Questions? Call Garvin Tom at (209) 969-5445 or via e-mail gtom12@hotmail.com

League Information: Players may enter the WCRC Winter Doubles League in more than one division (i.e. 3.0 and 3.5), as long as he/she is playing at or above his/her level. If a player is entering in more than one division, he/she may enter with the same partner or a different partner but may not enter with different partners at the same level.

The league runs from January 1, 2023 - May 26, 2023. The tournament is scheduled for June 9-11, 2023.

Once League play is complete and registration for the end-of-League Tournament begins, a player may **NOT** enter the Tournament at more than one level. **No exceptions will be made.**

Mt. Diablo High School wants to THANK YOU!

The Mount Diablo High School Red Devils Boys Team 2022-2023 wants to thank everyone at WCRC for their unconditional support for the last six years.

Special thanks to the teams where Tammie Snyder and Glenn McBee are captains.
This season, we did not have enough racquets to start and now we are ready to go!

Thank you!

Coach David Pintado

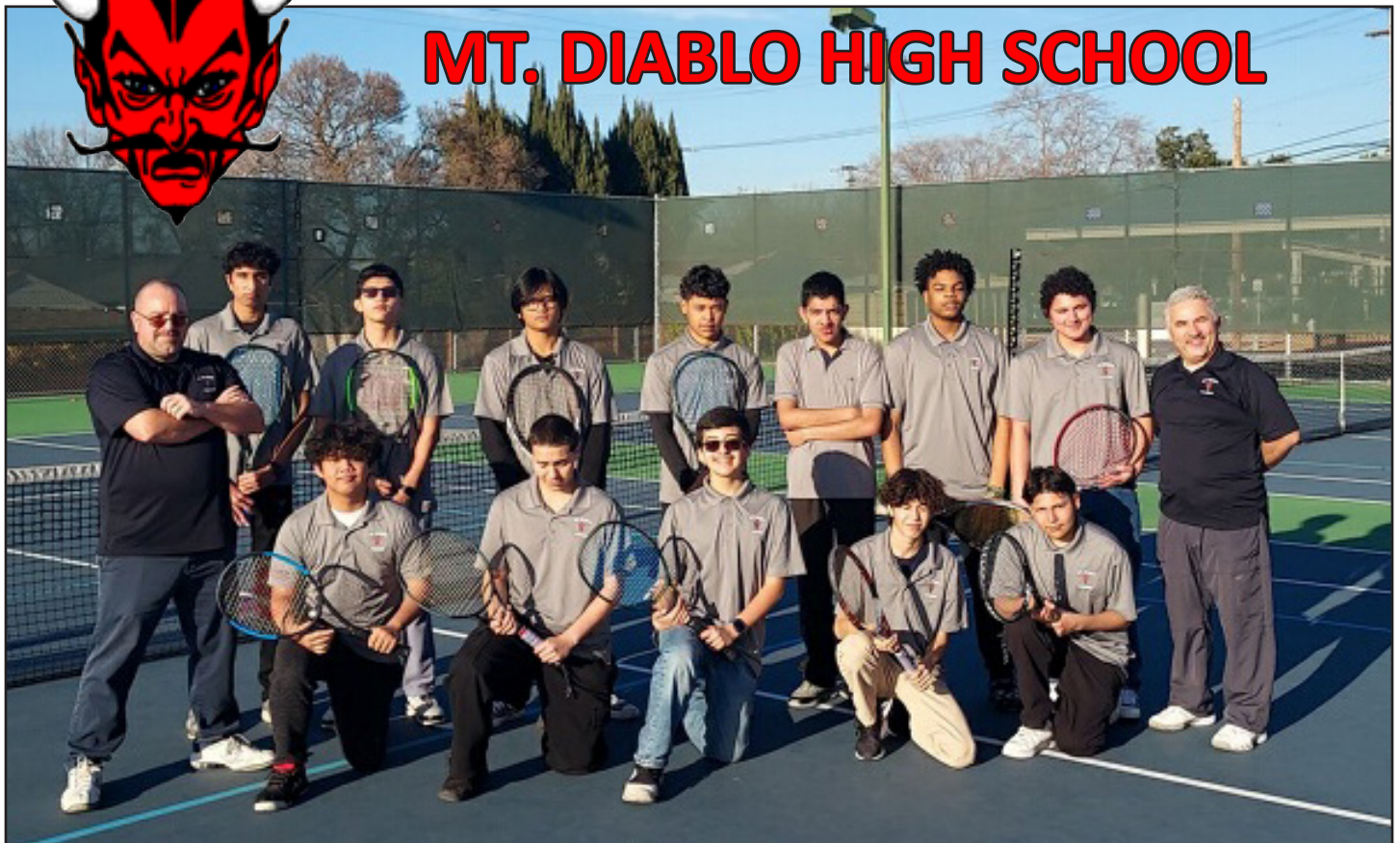
Assistant coach Trevor Pyke

Captain Arman Mirza

Thank you for all the
generous donations
received to help the Mt.
Diablo High School
boys tennis team!



MT. DIABLO HIGH SCHOOL





2022 Men's and Women's WI-NG (WInter SpriNG) Singles Leagues

Registration Form

Only
\$10

Full Name _____

Address _____

City _____ Zip _____

Home Phone _____

Work Phone _____

Cell Phone _____

Email _____

Current Rating: ☐ 2.5 ☐ 4.5
 ☐ 3.0 ☐ 5.0
 ☐ 3.5 ☐ 5.5
 ☐ 4.0

I would like to enter the following division:

- | | |
|---|---|
| <input type="radio"/> Women's 3.0 | <input type="radio"/> Men's 3.0 |
| <input type="radio"/> Women's 3.5 | <input type="radio"/> Men's 3.5 |
| <input type="radio"/> Women's 4.0 | <input type="radio"/> Men's 4.0 |
| <input type="radio"/> Women's 4.5/5.0 | <input type="radio"/> Men's 4.5/5.0 |
| <input type="radio"/> Women's 50+ (3.0-5.0) | <input type="radio"/> Men's 50+ (3.0-5.0) |

50+ Division is 1 flight with ALL levels (3.0 - 5.0)

I am a: ☐ WCRC Member (\$10)
 ☐ Non-Member (\$10)

Dates: October 31st - April 16th

Entry Fee: \$10 (per bracket)

Format: Men's Singles/Women's Singles

Divisions: Men 3.0 - 4.5+ & 50+ years of age
 Women 3.0 - 4.5+ & 50+ years of age

Scheduling: This is an open schedule. Players
 schedule matches (date, time, and
 location) by mutual agreement.
 Players use the league website to
 communicate.

Match Format: Best two out of three sets. When
 opponents agree, a super tiebreaker
 (10 point) can be used in lieu of the
 third set.

Match Site: Any site mutually agreed upon

Scoring: The winner is responsible for
 reporting the match score online at
 www.wcrc.net.

Standings: Division standing will be updated on
 a real time basis as scores are posted

Tournament: End-of-season tournament by
 arrangement for top 4 players in
 standings. Playoff matches to
 be completed 4/17 to 5/31.

Match Min.: 1 match

Checks to: Walnut Creek Racquet Club (**NOT** WCRC)
 c/o Cameron Coltharp
 336 Blue Ridge Drive
 Martinez, CA 94553

Or Online: wcrc.net/login

Questions: camcoltharp@gmail.com
 510-717-2107

Only
\$10

Schedule subject to change

February 2023

Sunday	Monday	Tuesday	Wednesday	Thursday	Friday	Saturday
<div>CHECK OUT OUR WCRC USTA MATCHES THIS MONTH</div> <div>Come on out and cheer on your favorite teams!</div>			<div>1</div> <div>6:30 pm</div> <div>40+ 4.0M-B vs DB</div> <div>7:00 pm</div> <div>18+ 7.0MX-B vs PH</div>	<div>2</div> <div>6:30 pm</div> <div>18+ 9.0MX-A vs RH</div>	<div>3</div> <div>7:00 pm</div> <div>40+ 3.5W-D vs WC-A</div>	<div>4</div> <div>10:30 am</div> <div>40+ 4.0M-A vs WC-C</div> <div>11:00 am</div> <div>40+ 3.5W-C vs MCC</div> <div>1:30 pm</div> <div>40+ 3.0MB vs DH</div>
<div>5</div> <div>10:30 am</div> <div>40+ 3.5M-A vs DB</div> <div>11:00 am</div> <div>40+ 3.0W-B vs RH</div> <div>1:00 pm</div> <div>40+ 4.5W-A vs VV</div> <div>4:00 pm</div> <div>40+ 4.0W-A vs Oak</div>	<div>6</div> <div>10:30 am</div> <div>65+ 6.0M-A vs CC</div> <div>6:30 pm</div> <div>18+ 8.0MX-A vs RH</div> <div>7:00 pm</div> <div>40+ 4.0M-C vs RH</div>	<div>7</div> <div>10:30 am</div> <div>40+ 3.5W-B/DT vs Oak</div> <div>6:30 pm</div> <div>18+ 9.0MX-B vs WC-A</div> <div>7:00 pm</div> <div>40+ 3.5W-A vs DH</div>	<div>8</div> <div>6:30 pm</div> <div>40+ 3.0W-A vs VV</div> <div>7:00 pm</div> <div>40+ 3.0M-B vs DB</div>	<div>9</div> <div>10:30 am</div> <div>40+ 3.5W-A/DT vs Mea</div> <div>6:30 pm</div> <div>40+ 3.5W-C vs SMC</div> <div>7:00 pm</div> <div>18+ 8.0MX-C vs DH</div>	<div>10</div> <div>10:30 am</div> <div>65+ 7.0W-A vs Arl</div> <div>40+ 3.5W-C vs CM</div> <div>6:30 pm</div> <div>40+ 3.5W-D vs RH</div> <div>7:00 pm</div> <div>18+ 8.0MX-A vs Oak</div>	<div>11</div> <div>10:30 am</div> <div>40+ 3.0W-A vs RH</div> <div>40+ 4.0W-B vs SMC</div> <div>11:00 am</div> <div>18+ 8.0MX-B vs WC</div> <div>1:00 pm</div> <div>40+ 4.0M-B vs WP</div> <div>4:00 pm</div> <div>40+ 4.0W-B vs WC-C</div>
<div>12</div> <div>9:00 am</div> <div>40+ 3.0W-A vs RH</div> <div>10:30 am</div> <div>18+ 8.0MX-B vs WC</div> <div>11:00 am</div> <div>40+ 4.0M-B vs WP</div> <div>1:00 pm</div> <div>40+ 4.0W-B vs WC-C</div> <div>2:30 pm</div> <div>40+ 4.0W-B vs WC-C</div>	<div>13</div> <div>10:30 am</div> <div>40+ 3.5WA-DT vs WC-B</div> <div>6:30 pm</div> <div>40+ 3.0W vs WC-A</div> <div>7:00 pm</div> <div>18+ 7.0MX-A vs RH</div>	<div>14</div> <div>10:30 am</div> <div>65+ 6.0M-A vs Rich</div> <div>6:30 pm</div> <div>40+ 3.0M-A vs RH</div> <div>7:00 pm</div> <div>18+ 9.0MX-A vs WC-B</div>	<div>15</div> <div>6:30 pm</div> <div>40+ 4.0W-A vs RH</div> <div>6:30 pm</div> <div>18+ 40+ 4.5A vs MCC</div>	<div>16</div> <div>10:30 am</div> <div>65+ 7.0W-A vs CC</div> <div>6:30 pm</div> <div>40+ 3.5M-C vs Pin</div> <div>7:00 pm</div> <div>40+ 3.5M-D vs WC-B</div>	<div>17</div> <div>10:30 am</div> <div>40+ W3.5C-DT vs WC-B</div> <div>6:30 pm</div> <div>40+ M3.0-B vs PH</div> <div>6:30 pm</div> <div>40+ M4.0-D vs WC-B</div>	<div>18</div> <div>9:00 am</div> <div>40+ M4.5-A vs DB</div> <div>10:30 am</div> <div>40+ M3.5-A vs RH</div> <div>11:00 am</div> <div>40+ M3.5-C vs DH</div> <div>1:00 pm</div> <div>40+ W4.0-A vs OW</div> <div>4:00 pm</div> <div>40+ W4.0-D vs RH</div>
<div>19</div> <div>9:00 am</div> <div>40+ 3.0M-A vs DB</div> <div>10:30 am</div> <div>18+ 7.0MX-A vs WC-B</div> <div>11:00 am</div> <div>40+ 3.5W-B vs WC-C</div> <div>1:00 pm</div> <div>40+ 4.0M-C vs MCC</div> <div>4:00 pm</div> <div>40+ 4.0M-D vs Laf</div>	<div>20</div> <div>10:30 am</div> <div>65+ 7.0W-A vs MM</div> <div>7:00 pm</div> <div>18+ 9.0MX-A vs WC-B</div>	<div>21</div> <div>10:30 am</div> <div>40+ 3.5W-B/DT vs WC-C</div> <div>6:30 pm</div> <div>40+ 3.5M-B vs DB</div>	<div>22</div> <div>10:30 am</div> <div>65+ 8.0M-A vs Berk</div> <div>6:30 pm</div> <div>40+ 4.0W-D vs DH</div> <div>7:00 pm</div> <div>40+ 3.5M-C vs RH</div>	<div>23</div> <div>10:30 am</div> <div>5+ 7.0M-A vs MS</div> <div>10:30 am</div> <div>40+ 3.5W-C/DT vs Oak</div> <div>6:30 pm</div> <div>40+ 3.5W-A vs VV</div> <div>7:00 pm</div> <div>18+ 7.0MX-B vs DH</div>	<div>24</div> <div>10:30 am</div> <div>40+ 3.5W-A/DT vs CM</div> <div>6:30 pm</div> <div>40+ 3.5W-D vs OCC</div> <div>7:00 pm</div> <div>40+ 4.5M-A vs DB</div>	<div>25</div> <div>10:30 am</div> <div>40+ 4.0W-D vs Oak</div> <div>11:00 am</div> <div>18+ 8.0MX-C vs RH</div> <div>1:00 pm</div> <div>40+ 3.0W-A vs RH</div> <div>4:00 pm</div> <div>40+ 3.5M-D vs WP</div>
<div>26</div> <div>9:00 am</div> <div>40+ 3.5M-B vs DB</div> <div>10:30 am</div> <div>40+ 3.5M-A vs Pin</div> <div>40+ 3.0W-B vs MCC</div> <div>11:00 am</div> <div>40+ 3.5W-D vs DH</div> <div>1:00 pm</div> <div>40+ 4.0M-A vs RH</div> <div>1:30 pm</div> <div>18+ 6.0MX-A vs RH</div> <div>4:00 pm</div> <div>40+ 4.0W-B vs VV</div>	<div>27</div> <div>6:30 pm</div> <div>40+ 3.5W-B vs MCC</div> <div>7:00 pm</div> <div>18+ 9.0MX-B vs SMC</div>	<div>28</div> <div>10:30 am</div> <div>65+ 6.0M-A vs Lan</div> <div>6:30 pm</div> <div>40+ 4.0W-C vs WC-B</div> <div>7:00 pm</div> <div>18+ 8.0MX-A vs WP</div>	<div>NEW MEMBERSHIP RAFFLE</div> <div>Each month a random draw will pick a WCRC member's name to receive free WCRC membership for a year!</div> <div>This month's winner is: Catherine Sampietro</div>			

CALENDER OF EVENTS

2023

Feb

Mar

Feb 3-5	WCRC Fall Mixed Tournament
Feb 6	USTA 65+ DT Season Opens
Feb 21	USTA 55+ Team Registration Closes
	USTA 18+ Team Registration Closes
	USTA 18+ DT Team Registration Closes
Mar 10	USTA 40+ DT Season Closes
Mar 12	USTA 40+ Season Closes
	USTA 18+ Mixed Season Closes
Mar 20	USTA 55+ Season Opens
Mar 16-19	USTA 18+ Mixed Playoffs Round 1
Mar 20-24	USTA 40+ DT Playoffs Round 1
Mar 23-26	USTA 40+ Playoffs Round 1
	USTA 18+ Mixed Playoffs Round 2
Mar 27-31	USTA 40+ DT Playoffs Round 2
Mar 30-Apr 2	USTA 40+ Playoffs Round 2
	USTA 18+ Mixed Playoffs Round 3

WCRC LEAGUES

Fall Mixed League - Aug. 1 - Jan. 26, 2023

WING Singles League - Oct. 31- Apr. 16, 2023

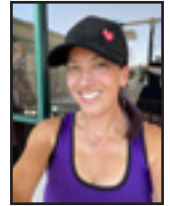
Winter Doubles League - Jan. 1 - May 26, 2023

Fall Mixed Tournament - TBD

TREASURER'S REPORT

Cara Mia Barnacascel

January - November, 2022



Income

Total League Dues	\$6,403.19
Membership Dues	20,653.84
Tournament Dues	
Total Calcutta Tournament	\$2,525.00
Mid-Summer Night Tournament	506.18
Total Tournament Dues	\$3,031.18
Total Income	\$30,088.21
Gross Profit	\$30,088.21

Expenses

Board Meeting	870.39
Captains Meetings	340.30
Contributions	1,000.00
Gifts	159.11
League Expenses	
Total Fall Mixed League Expenses	\$2,170.78
Total Summer Singles Expenses	\$496.00
Total Winter Doubles Expenses	\$3,249.83
Total League Expenses	\$5,916.61
Nationals Fee	780.00
Nationals Stipend	500.00
Office Supplies	253.61
Total Printing and Reproduction	\$452.02
Total Professional Fees	\$270.00
Rental Fees	-500.00
Sectionals Fees	2,040.00
Supplies	578.46
Taxes	25.00
Tournament Expenses	
Total Calcutta Expenses	\$10,346.16
Total Mid Summer Tournament Expenses	\$1,609.70
Total Tournament Expenses	\$11,955.86
Website	1,089.40
Total Expenses	\$25,730.76
Net Operating Income	\$4,357.45
Other Income	
Net Other Income	\$166.62
Net Income	\$4,524.07

Balance through October, 2022 **\$62,304.19**

Mixed Doubles League - Standings

6.0

Kayla Baier/Chris Alexander

W

3

L

0

7.0

Rebecca Kay/Garvin Tom

5

1

Arwa Kaddoura/Steve Buchholz

5

1

8.0

Cristina Tudor / Tal Yahud

5

0

9.0

Stacey Huang/ Nghia Duong

3

0

WING Singles League - Standings

Men's

3.0

W

L

Dale Welsh

1

0

Richard Poolis

1

0

3.5

Brian Hennessy

2

0

4.0

Jeffrey Smith

8

2

4.5+

Travis Yarlagadda

1

0

50+

Dana Dominguez

1

0

Women's

3.0

W

2

L

0

Arwa Kaddoura

3.5

No matches played yet

4.0

No matches played yet

4.5+

No matches played yet

50+

No matches played yet