

# THE COURT REPORTER

Newsletter of the Walnut Creek Racquet Club

November, 2023



**18+ 3.5 Women at Nationals  
Surprise, AZ**

Nationals

Nationals



**55+ 8.0 Women at Nationals  
Orlando, FL**



## Walnut Creek Racquet Club

P.O. Box 4574 • Walnut Creek, CA 94596  
(925) 945-0105 • www.wcrc.net

2023  
Board

### OFFICERS

<b>President</b>	<b>Garvin Tom</b> - 209-969-5445 gtom12@hotmail.com
<b>Vice President</b>	<b>Tammie Snyder</b> - 202-7000 tammie4tennis@gmail.com
<b>Secretary</b>	<b>Deanna Fong</b> - 330-8295 deanna_fong@yahoo.com
<b>Treasurer</b>	<b>Cara Mia Barnacascel</b> - 413-2871 sakuraiiko@gmail.com

### ACTIVITY CHAIRPERSONS

<b>Club</b>	<b>Bob Satcher</b> - 672-2110 bsatcher@astound.net
<b>Photographer</b>	
<b>Newsletter</b>	<b>Tammie Snyder</b> - 202-7000 tammie4tennis@gmail.com
<b>Website</b>	<b>J. Patrick Forden</b> - 415-205-3515 forden@percepticon.com
<b>Newsletter Reporter</b>	<b>Ian McLaughlin</b> - 510-759-9633 iemclaughlin@yahoo.com
<b>Tournaments</b>	<b>Sally Krapf</b> - 415-290-6466 sallykrapf@gmail.com
<b>Membership Compliance</b>	<b>Kayla Baier</b> - 707-628-7206 kaylahornbrook@gmail.com <b>Rebecca Kay</b> - 415-497-4274 rebeccacelotti@gmail.com
<b>USTA Leagues</b>	<b>Tammie Snyder</b> - 202-7000 tammie4tennis@gmail.com
<b>Membership</b>	<b>Pam Maloney</b> - 787-3970 pam4tenis@gmail.com
<b>City of Walnut Creek Liaison</b>	<b>Glenn McBee</b> - 984-6710 glennmcbee@gmail.com
<b>Mixed Doubles League</b>	<b>Lynne Weinshelbaum</b> - 285-9503 lweinshelbaum@yahoo.com
<b>Doubles League</b>	<b>Garvin Tom</b> - 209-969-5445 gtom12@hotmail.com
<b>Summer Singles</b>	<b>Steve Lehmer</b> - 925-285-0028 lehmer@pacbell.net
<b>WING Singles</b>	<b>Cameron Coltharp</b> - 510-717-2107 ccoltharp@telecarecorp.com
<b>WCRC Leagues Gift Coordinator</b>	<b>Sally Krapf</b> - 415-290-6466 sallykrapf@gmail.com
<b>Social Media Coordinator</b>	<b>Garvin Tom</b> - 209-969-5445 gtom12@hotmail.com

## THE PRESIDENT'S REPORT

### Happy November!

Hi tennis peeps! Shorter days and cooler weather are upon us as we kick in the Fall season, and for many of us, this is the best time of the year to play. Fortunately, we still have plenty of opportunities around to do so.



**Garvin Tom**  
2023 WCRC President

Our WCRC **Fall Mixed League** has been going strong for a couple of months now, but there is still plenty of time to sign up and play, so if you've been thinking about it, go ahead and sign up today.

We are also opening up **WING Singles** November 6th and **Winter Doubles** January 1st.

On the USTA front we are nearing the end of the Combo, 55+ Mixed and 70+ regular seasons. Good luck to those teams who are advancing to playoffs!

And we are in the third and final stage of the court resurfacing project at Heather Farm. Courts 4-7 have been completed, and now courts 9-11 are in the middle of their resurfacing process, which is scheduled for completion this month. I am looking forward to having all these courts open again.

Finally, a little word of advice that you may have heard already: never get involved with a tennis player, because love means nothing to them :)

See you on the courts!

*Garvin Tom*



# M EMBERSHIP

Welcome to Our **14 New Members**  
Current Membership: **1216**

Al Blake	Walnut Creek	3.5
Alan Chan	Alamo	4.0
Nancy Chan	Alamo	4.5
Rebecca Corteza	Concord	4.0
Nathaniel Hirai	Oakland	4.0
Jeb Horton	Oakland	4.0
Scott Johnston	Concord	N.A.
Zurab Lobzhanidze	Walnut Creek	3.5
Sandeep Pendharkar	San Ramon	3.5
Julia Porter	Oakley	4.0
Petra Reinecke	Lafayette	4.5
Steven Serban	Walnut creek	N.A.
Thomas Shin	Orinda	3.5
Sven Truijen	Concord	N.A.



Membership questions contact:  
Pam Maloney at 925-787-3970 or  
email at: pam4tenis@gmail.com

## NEW MEMBERSHIP RAFFLE

Each month a random draw will  
pick a WCRC member's name to  
receive free WCRC membership  
for a year!

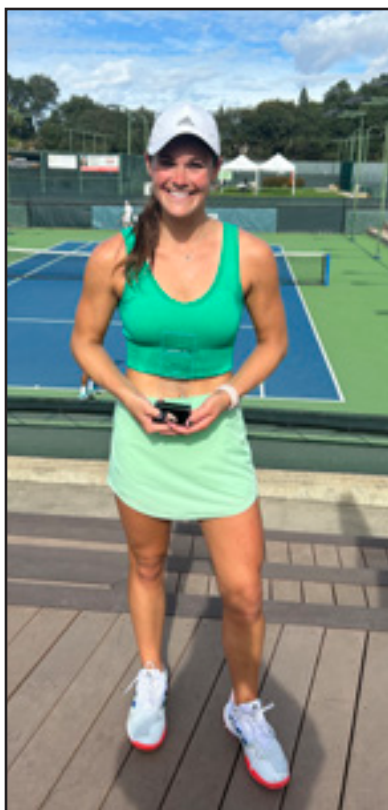
This month's winner is:  
**Betsy Gwynn**



## Tennis News



### WCRC Has Strong Showing at Gold River Grand Prix



Gold River Sports Club held their annual Grand Prix the weekend of November 3 - 5th. The Walnut Creek Racquet Club had a strong showing with WCRC players playing in various event.

#### Results:

#### 3.0 mixed champions

Chris Alexander and Kayla Baier

#### 4.5 singles champion

Steph Stieber

#### 4.5 singles Finalist

Fenny Widjaja

#### 4.0 singles champion

Marina Wills

#### 4.0 men's doubles champions

Brian Wills and Matt Lourens

#### 3.5 mixed

Brain Hennessey and Rebecca Kay are playing for second place 11/11-11/12 (due to a rainout).





# Member Spotlight

## Loving The Home Court Advantage: Audra Lutter

*Interview and article by Ian McLaughlin*

*As an effort to get to know our membership the Board has decided to have a monthly column "Member Spotlight". We will be interviewing WCRC members and getting to know them. This article will help us find out how they got introduced to tennis, their background, any favorite memories, etc. We hope you enjoy this commentary.*

**W**CRC member Audra Lutter only picked up tennis in earnest following the Covid pandemic, giving her much less court experience than most of our club members, but she's no stranger to competitive sports, having played both softball and basketball at Pinole Valley High School in her hometown.

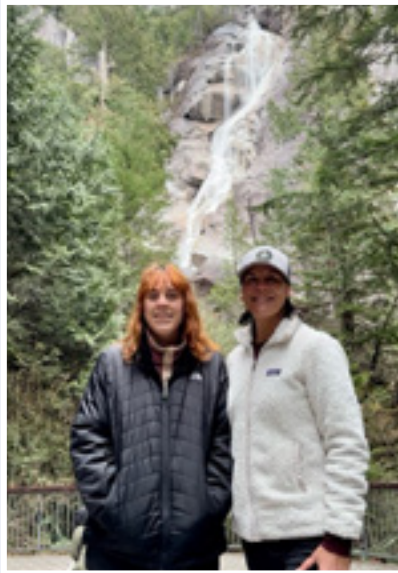
Audra and her parents would hit the tennis ball sometimes on the courts at Pinole High for fun when she was a child, but it wasn't until recently when her friend answered an ad on Craigslist for hitting partners that she met club member Tila Parker, who introduced Audra to the tennis community at Heather Farm.

Once she began playing more often and the competitive juices started flowing for Audra, she learned that many of the skills that enabled her to compete in softball and basketball translated well to the tennis court, and around that time Audra was warmly welcomed into the tennis community at Heather Farm when she met Cara



Mia Barnacascel and joined her "Deuces Wild" team. Cara Mia is a prolific team captain and presence at WCRC and Audra became deeply embedded in the WCRC family by playing on several of Cara Mia's teams.

Audra plays regularly through WCRC and also competes in a co-ed adult softball league at Heather Farm. To remain competitive, Audra pays close attention to her health and wellness and has been working with a strength trainer regularly,



which she thinks has benefitted her tremendously both on and off the court.

Audra lives close to Heather Farm and works locally as a financial project manager for a law firm. She enjoys spending time with her daughter Alexis, who's studying at UC Santa Cruz, and son Aaron, a sophomore at De La Salle high school. But her true love is traveling, especially to Hawaii, where she's visited nine times in the last two years (yes, please!) and this year she went to spring training to see the A's, her favorite team since the 1980's through some tough times and some great times.

Having been a competitive athlete her entire life, Audra knows that home field advantage is real, and that it exists at Heather Farm, where she knows very well the structural nuances of the

courts, but the real home court advantage stems from the people at the club. The same community spirit that welcomed her with open arms into the club as a new player just a few years ago provides support for all WCRC players as they compete against each other and against other teams.

Although she hasn't been playing as long as other club members have, Audra Lutter knows what it takes to compete and win in a sport, and that WCRC facilitates the success of its members by providing a palpable home court advantage. ❖







# Tennis News



## Walnut Creek Wise Aces Return From Nationals, Forging Stronger Bonds

In a triumphant return from representing NorCal Women's 3.5 18+ at USTA Nationals, in Surprise, Arizona, the Walnut Creek Wise Aces are not only stronger as a team but also as a close-knit family.

Each member of the Wise Aces stepped up to support one another, demonstrating exceptional teamwork, resilience, and sportsmanship. Our journey was a true testament to the power of unity and friendship. No matter the challenges, we found a way to push through and succeed together.

Beyond the tennis courts, we shared moments of camaraderie and laughter that strengthened our bonds. Staying in the same house like sorority sisters, we became more than just teammates; we became family. From sharing meals to



*Kelley Krock, Heather Houston, Stephanie Chamberlin, Roseanne Kim, Tracey Hull, Robin Hultgren, Shashanna Singh.  
Front row: Tammy Fox, Jill Krimmel, Roz Zahiri*

enjoying drinks together, we created memories that will last a lifetime.

The experience of competing against diverse teams from different parts of the country, from the sunny courts of Puerto Rico to the heartland of Nebraska, broadened our horizons as we were exposed to a variety of playing styles. These encounters will undoubtedly help us evolve as even more formidable tennis players!

We as Wise Aces returned from Nationals not only with a

*Stephanie Chamberlin, Heather Houston, Tammy Fox*



# Tennis News



deeper appreciation for the sport but also with a strengthened sense of unity. Our journey serves to strengthen our inspiration, reminding us that success in tennis, as in life, is often achieved by working together and having each other's backs.

As the team looks ahead to ensuing tournaments and challenges, our experience at Nationals will undoubtedly serve as a bedrock for our subsequent successes. We are proud to have represented WCRC and look forward to future opportunities to do so again.



*Shashanna Singh, Tracey Hull, Jill Krimmel, Roz Zahiri*

## Nationals

*Robin Hultgren, Roz Zahiri, Tammy Fox, Roseanne Kim, Heather Houston, Stephanie Chamberlin*



*Kelley Krock,  
Robin Hultgren,  
Kelly Sanchez,  
Tracey Hull,  
Heather Houston,  
Shashanna Singh,  
Jill Krimmel,  
Roz Zahari,  
Tammy Fox,  
Roseanne Kim,  
Stephanie Chamberlin*







# Tennis News



## Cinderella Team Finished Off the Season at Nationals!!!

We had a small roster and all but two of our players ended up traveling to Orlando with us to represent Diablo North's 55+ 8.0 Women's team. We had 14 players, 10 spouses and 1 designated cheerleader! We rented a HUGE 15 bedroom/17 bathroom home that housed all 25 of us. A few got there early to shop for food and alcohol for the house and we had our staff Chef Tina Sorensen and Sous Chef Charlie DeSchane. Everyone pitched in whenever and wherever it was needed from cooking, prepping, cleaning, organizing, driving, it was all incredible. To say that we made lifelong memories together is a huge



# Nationals



understatement. We practiced, played, won and also lost together. We were a team but honestly we are a family.

Although we came up just short at Nationals (those darn super tie breakers got the best of us we won only 1 out of 6 STB's) we never blamed each other knowing that we all gave it our best every single point! We have so many other lasting memories to look back on. Signing each other's shirts, playing pickleball, hitting at Drive Shack, going putt putt golfing, Epcot and the highlight was kayaking with dolphins and manatee's was SO COOL! We played games, Farkle and Bank as well as Left, Center, Right. We ate amazing food, drank way too much and





# Tennis News



shared so many laughs together. Every single player on this team helped us get to Nationals.

First and foremost I want to thank my co-captain and bestie Heidi Belton, we had so many ups and downs this season but you never gave up. Always fun to experience such a great team with you!

Thank you to all of our players: Darcy Beauchemin, Garbo Berger, Nancy DeSchane, Robin Elawady, Nga Gross, Donna Himenez, Christine Hohenstein, Athena Lofquist, Shay Martin, Sharon Nasstrom, Jill Reynolds, Tina Sorensen Berman, Karen Treppa and Donna Vis.

Additional thanks to our supporters: Patrick Beauchemin, Brad Belton, Brett Berger (our roving photographer), Charlie DeSchane, Erik Gross, Derek Lofquist, Justin Snyder, Todd Sorensen, Mike Treppa, Larry Vis, Pru Pruden, Jeff Laymon and Heidi's sister-in-law Diane Middeke, we could not have done it without you. Looking forward to many more seasons together and a lifetime of memories.

Until next time....Tammie











# Tennis News



## 40+ 6.0 Mixed Team Had a Blast at Sectionals!

by Cara Mia Barnacascel

Deuces Wild 6.0 had a great time at sectionals in Folsom. For a few of the 2.5 ladies it was their first time so it was a wonderful experience for them to participate in!

For our first match on Friday we swept San Carlos. Second match against Rafael we lost on a controversial bad line call that sealed the deal in a third set tiebreaker. Melissa was feeling the effects of heat stroke but she fought through a very long match so it was disappointing to lose that line that way, but it's sectionals and unfortunately there are very competitive people out there.

Last match we had to win 2-1 to make it to semi-finals, and we faced the toughest team, Mahaney. They were a local team so had a very deep roster of many players playing above level. We split line 1 and 2 and it was down to line 3. We had a good chance but this was against their strongest pair and Mahaney took that line and won the match.

Ultimately the team enjoyed a weekend of bonding and great food!

*Pictured: captain Cara Mia, Peter Houston, Chris Dundon, co-captain Mary Soe, Dale Welsh, Douglas Fish, Melissa Bach, Maria Rueda, Patrick Wong, Sandra Harris*



*Pictured: Douglas Fish, Robert Mimaki, captain Cara Mia Barnacascel, co-captain Mary Soe, Dale Welsh, Melissa Bach, Chris Dundon, Maria Rueda, Peter Houston, Miwa Yoneyama, Richard Jung*



*(Players not pictured in either: Jeff Bennett, Michelle Gonzales, Nihaar Gupta, Nellie Hill, Mark Keeling, Young Lee, Chandra Mundra, Michele Turton, Dave Wong, Jisun Yoo)*



# Sectionals







# Tennis News



## Gritty Grinders take it all the way!!!

Jessica Kim put together a solid group of Gritty Grinders to compete in the 3.5/4.0/4.5 Tri-Level tournament the weekend of October 27-29.

The team consisted of **3.5 players:** Lani Aurelius, Zuhail Elhan, Tami Lightle and Tammie Snyder

**4.0 players:** Caitlin Finnel, Noa Ramo-Larios, Chandra Thomas and Cristina Tudor

**4.5 players:** Mai Angsupanich, Jessica Kim, Lisa Snowden and Steph Stieber.

Friday the team had two matches, the first one against Love All and the second match against Diamond Hills winning 2-1 and 3-0.

Saturday the team defeated both Drop It Like Its Hot and Hit Happy with scores of 2-1.

The Grinders finished 4-0 and in first place in pool play which got them into the semi finals where they met up against Love All again. This time they won 3-0.

In a tight finals match against Game Set Lunch, they squeaked out a close one defeating them 2-1.

The team is now heading to Nationals March 7-9 in San Diego.



*l-r Tammie Snyder, Chandra Thomas, Steph Stieber, Noa Ramo-Larios, Zuhail Elhan, captain Jessica Kim, Tami Lightle, Mai Angsupanich, Lisa Snowden and Lani Aurelius*

*Not pictured: Caitlin Finnel and Cristina Tudor*

*Caitlin Finnel and Noa Ramo-Larios*





# Tennis News



## Two Great Tri-Level Weekends – One Upcoming Trip to Nationals

*by Steve Lehmer*

A group built out of a core of WCRC players and a few friends competed in two different Norcal Tri Level events across two consecutive weekends. Tri Level brings independent teams across Norcal, typically playing at a level comparable to better sectionals teams. It often feels like you're playing line 1 at sectionals every match.

Each team match includes 3 lines of doubles, with each line representing a different level of play (i.e., a 3.5 line, a 4.0 line, and a 4.5 line playing side-by-side). The 1st weekend at Blackhawk included the 3.0/3.5/4.0 levels, where the team went 4-0 in pool play, swept their semi-final match, and then fell just short in the championship in a match that lasted nearly 7 hours including 3 rain delays. 2nd place – outstanding!

The following weekend event at Diamond Hills was for the 3.5/4.0/4.5 levels. This time the team was able to pull out the big points to the end. Again going 4-0 in pool play, the semifinal was a 2-1 nail-biter, with the 4.5 line staying strong through a 10-8 supertie in the deciding line with a large crowd cheering on. In the championship, the 4.5's again won a supertie to even the match at 1-1, and it was the 4.0's who played the supertie, knowing the title was at stake. A couple fortunate bounces and good shots later, a 10-6 win, and a trip to nationals in San Diego

next March! Lots of good tennis, and a fun crowd to hang out with, with some great WCRC family and friends to root us on.

**4.5 players:** Alex Baier, Nick Saquilayan, Jeff Wong

**4.0 players:** Parag Bhatt, Suresh Kadiyala, Steve Lehmer, Matt Lourens, Brian Miller, Sumit Nagal

**3.5 players:** Johnny Gwynn, Brian Hennessy, Martin Sanchez, Keane Tarrosa

**3.0 players:** Chris Alexander, Kevin Katari, Patrick Wong







## 2023 Men's and Women's WING (WInter SpriNG) Singles Leagues Registration Form

Only  
\$10

Full Name \_\_\_\_\_

Address \_\_\_\_\_

City \_\_\_\_\_ Zip \_\_\_\_\_

Home Phone \_\_\_\_\_

Work Phone \_\_\_\_\_

Cell Phone \_\_\_\_\_

Email \_\_\_\_\_

Current Rating:    ☐ 2.5            ☐ 4.5  
                         ☐ 3.0            ☐ 5.0  
                         ☐ 3.5            ☐ 5.5  
                         ☐ 4.0

I would like to enter the following division:

- |   |   |
|---|---|
| <input type="radio"/> Women's 3.0           | <input type="radio"/> Men's 3.0           |
| <input type="radio"/> Women's 3.5           | <input type="radio"/> Men's 3.5           |
| <input type="radio"/> Women's 4.0           | <input type="radio"/> Men's 4.0           |
| <input type="radio"/> Women's 4.5/5.0       | <input type="radio"/> Men's 4.5/5.0       |
| <input type="radio"/> Women's 50+ (3.0-5.0) | <input type="radio"/> Men's 50+ (3.0-5.0) |

**50+ Division is 1 flight with ALL levels (3.0 - 5.0)**

I am a:    ☐ WCRC Member (\$10)  
              ☐ Non-Member (\$10)

Only  
\$10

Dates: November 6th - April 14th

Entry Fee: \$10 (per bracket)

Format: Men's Singles/Women's Singles

Divisions: Men's 3.0 - 4.5+ & 50+  
Women's 3.0 - 4.5+ & 50+

Scheduling: This is an open schedule. Players are responsible for scheduling their own matches. Players will be provided with a contact list of participants within their division.

Match Format: Best best two out of three sets. When opponents agree, a super tiebreaker (10 point) can be used in lieu of the third set.

Match Site: Any site mutually agreed upon

Scoring: The winner is responsible for reporting the match score by logging on to [www.wcrc.net](http://www.wcrc.net).

Standings: Division standing will be updated on a real time basis as scores are posted

Tournament: End-of-season tournament by arrangement for top 4 players in standings. Playoff matches to be complete 4/15 to 5/31.

Match Min.: 1 match

Checks to: Walnut Creek Racquet Club (**NOT** WCRC)  
c/o Cameron Coltharp  
336 Blue Ridge Drive  
Martinez, CA 94553

Or Online: [wcrc.net/login](http://wcrc.net/login)

Questions: [camcoltharp@gmail.com](mailto:camcoltharp@gmail.com)  
510-717-2107



**OPERATING HOURS AT WCTC**

**Monday – Friday: 8am-10:00pm • Saturday & Sunday: 8am-8pm**

**COURT RESURFACING UPDATE**

Court resurfacing is on the home stretch! Barring any sustained bouts of rain, the remaining courts are expected to finish Mid-November. Once the resurfacing has completed, Courts 1 – 5 will go back to reservation courts and 6-7 will be our two walk-on courts.

**CLUBHOUSE HOURS DURING RESURFACING**

The Heather Farms Clubhouse will remain open during our court resurfacing and will keep our regular hours. (Monday – Friday 8:00am – 10:00pm, Saturday & Sunday 8:00am – 8:00pm). We will still be offering our regular services including restringing, pro shop purchases, and bathroom accessibility.

**Winter 2024 YOUTH & ADULT CLASS REGISTRATION NOW OPEN!**

Registration for Winter classes is now open for youth and adult! Please visit our website for more information, and contact Jeff Forbes (Director of Instruction) at [jefff@lifetimeactivities.com](mailto:jefff@lifetimeactivities.com) for questions.

**NEW OFFERING for Winter 2024!**

Lifetime Activities is launching a new program offering: Customized Small Group Learning! These classes will be (2:01) two players to one coach and are a great opportunity for you and a family member/friend to register and receive more instruction with a coach! Whether you're a beginner seeking fundamentals or a seasoned player aiming for that killer serve, this program offers the flexibility to cater to all ages and levels.

Registration opens on Wednesday, November 1<sup>st</sup> at 10:00am

Registration will be over the phone or in person only!

Please visit our website for more information, and contact Jeff Forbes (Director of Instruction) at [jefff@lifetimeactivities.com](mailto:jefff@lifetimeactivities.com) for questions.

**November Passholder Special**

From October 27<sup>th</sup> – November 30<sup>th</sup>, we will be offering a November Passholder "Spin the Wheel" special! If you are a passholder with Lifetime Activities Walnut Creek come into our office and spin our prize wheel for a chance to win discounts and freebies in our Pro Shop!

Passholders may win up to 1 prize in October and 1 Prize in November.

1 spin per visit, prizes cannot be combined with other sales that may be occurring at the time of the passholder's win.

Passholders have until 11/30 to redeem their prize(s).

Questions? Please email David Resnick-Dunn (General Manager) at [davidr@lifetimeactivities.com](mailto:davidr@lifetimeactivities.com).

**Visit us online at [www.lifetimeactivities.com](http://www.lifetimeactivities.com) or stop by the the office at 1751 Heather Drive.  
Please call with any questions at 925-945-0105.**





## WCRC Men's & Women's 2024 Winter Doubles League



### Available Divisions

(you are eligible to play your level as well as one level above your current USTA rating)

- |  |  |
|--|--|
| <input type="checkbox"/> Men's 3.0     | <input type="checkbox"/> Women's 2.5/3.0 |
| <input type="checkbox"/> Men's 3.5     | <input type="checkbox"/> Women's 3.5     |
| <input type="checkbox"/> Men's 4.0     | <input type="checkbox"/> Women's 4.0     |
| <input type="checkbox"/> Men's 4.5/5.0 | <input type="checkbox"/> Women's 4.5/5.0 |

### League Cost

- \$40 per team (both Walnut Creek Racquet Club Members)
- \$50 per team (one WCRC Member, one non-member)
- \$60 per team (both non-WCRC members)

### League Information

Players may enter the WCRC Winter Doubles League in more than one division (i.e., 3.0 and 3.5), as long as he/she is playing at or above his/her level.

If a player is entering in more than one division, he/she may enter with the same partner or a different partner but may not enter with different partners at the same level.

**The league runs from January 1, 2024 - June 2, 2024.**

**The tournament is scheduled for June 14-16, 2024.**

Once league play is complete and registration for the end-of-League Tournament begins, a player may **NOT** enter the Tournament at more than one level.

**No exceptions will be made.**

**Questions? Call Garvin Tom at (209) 969-5445  
or via e-mail [gtom12@hotmail.com](mailto:gtom12@hotmail.com)**





# WCRC Men's & Women's 2024 Winter Doubles League Registration Form (Also on-line at [www.wcrc.net](http://www.wcrc.net))

PLAYER 1

PLAYER 2

Name	_____	_____
Mailing Address	_____	_____
City	_____	_____
ZIP Code	_____	_____
Home Phone	_____	_____
Work or Cell Phone	_____	_____
E-mail address	_____	_____
NTRP level	_____	_____

WCRC Member? ☐ YES ☐ NO

☐ YES ☐ NO

Division for which you are registering (please check one): NTRP (check one)

- ☐ Men's 3.0
- ☐ Men's 3.5
- ☐ Men's 4.0
- ☐ Men's 4.5/5.0

- ☐ Women's 2.5/3.0
- ☐ Women's 3.5
- ☐ Women's 4.0
- ☐ Women's 4.5/5.0

Registration Fees (note - if you are interested in joining the Racquet Club, please download a membership form from <http://www.wcrc.net/about/membership.htm> and return it with this application):

- \* \$50 per team (both Walnut Creek Racquet Club Members) • \$40 per team for on-line registration
- \* \$60 per team (one WCRC Member, one non-member) • \$50 per team for on-line registration
- \* \$70 per team (both non WCRC members) • \$60 per team for on-line registration

If you would like to register by mail, return this form with a check for registration fees (payable to Walnut Creek Racquet Club **NOT** WCRC) mail to:  
Walnut Creek Racquet Club, P.O. Box 4574, Walnut Creek, CA 94596.

**Questions? Call Garvin Tom at (209) 969-5445 or via e-mail [gtom12@hotmail.com](mailto:gtom12@hotmail.com)**

**League Information:** Players may enter the WCRC Winter Doubles League in more than one division (i.e, 3.0 and 3.5), as long as he/she is playing at or above his/her level. If a player is entering in more than one division, he/she may enter with the same partner or a different partner but may not enter with different partners at the same level.

The league runs from January 1, 2024 - June 2, 2024. The tournament is scheduled for June 14-16, 2024.

Once League play is complete and registration for the end-of-League Tournament begins, a player may **NOT** enter the Tournament at more than one level. **No exceptions will be made.**



# 2023 WCRC Fall Mixed Doubles League Registration Form (Also on-line at [www.wcrc.net](http://www.wcrc.net))

MALE PLAYER

FEMALE PLAYER

Name	_____	_____
Mailing Address	_____	_____
City	_____	_____
ZIP Code	_____	_____
Home Phone	_____	
Work or Cell Phone	_____	
E-mail address	_____	_____
NTRP level	_____	_____

WCRC Member? ☐ YES ☐ NO

☐ YES ☐ NO

**Division for which you are registering (please check one): Fill out a new form for additional levels.**

☐ Mixed 6.0

☐ Mixed 7.0

☐ Mixed 8.0

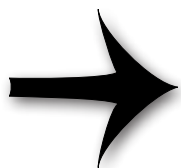
☐ Mixed 9.0

If you would like to register by mail, return this form by **December 1, 2023** with a check for registration fees (payable to Walnut Creek Racquet Club **NOT** WCRC) mail to: WCRC, P.O. Box 4574, Walnut Creek, CA 94596

**Questions?**

**Call Lynne Weinshelbaum at 925.285.9503  
or via e-mail [lweinshelbaum@yahoo.com](mailto:lweinshelbaum@yahoo.com)**

**Find detailed Information on next page...**



**League Information:** Players may enter the WCRC Mixed Doubles League in more than one division (i.e, 6.0 and 7.0), as long as he/she is not playing below his/her level. If a player is entering in more than one division, he/she may enter with the same partner or a different partner but may not enter with different partners at the same level.

# 2023 WCRC Fall Mixed Doubles League Registration Form (Also on-line at [www.wcrc.net](http://www.wcrc.net))

Don't forget that the league registration fee includes unlimited regular season doubles matches, a league gift and may include an end of the season tournament dependent upon weather and court scheduling.

**LEAGUE COMMISSIONER** Lynne Weinshelbaum: 925.285.9503

**DATES** August 1, 2023 – January 26, 2024

**ENTRY FEES**

WCRC Members	
On-Line Registration:	(\$40 per team)
Mail In Registration:	(\$50 per team)
Non WCRC Members	
On-Line Registration:	(\$60 per team)
Mail In Registration:	(\$70 per team)

**FORMAT** Mixed Doubles  
(players grouped by combined NTRP level; ie. 7.0 can be a 4.0 man/woman and a 3.0 woman/man or two 3.5 players)

**NTRP LEVELS** Mixed 6.0–9.0\*

**SCHEDULING** This is an open schedule. Players are responsible for scheduling their own matches. Players will be provided with a contact list of participants within their division.

**MATCH FORMAT** Best two-out-of-three set format.  
A super tiebreaker can be played if all players agree, otherwise full third.  
Both teams responsible for bringing balls to match; winning team gets the unopened can.  
Matches should be played according to the "Rules of Tennis."

**TOURNAMENT** End of season tournament with draw determined by league standings to be held over the weekend of Feb 2–4, 2024 dependent upon court scheduling and weather. To qualify for the tournament, teams must have completed and reported at least 2 matches during the regular league season. Depending on the number of entrants tournament play may include Friday night play. In addition, draws with large numbers of players may be required to play matches prior to the tournament weekend. Seeding for the tournament will be based on regular season standings of the top 4 teams in each division. The more matches you and your partner play, the higher your ranking will be. A minimum of 4 teams are required to generate a draw.



\* Teams with ratings more than 1 full step apart (i.e. 3.0 & 5.0 to make up an 8.0 team) are not eligible to play the end of season tournament.



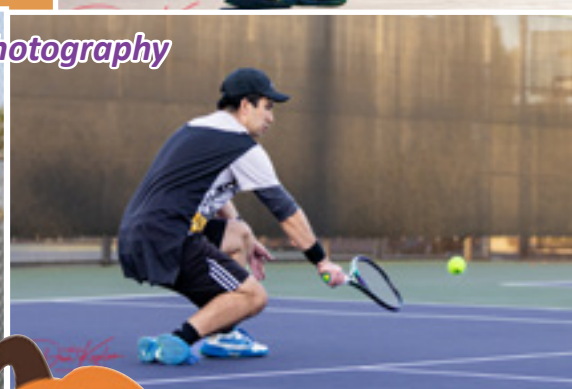
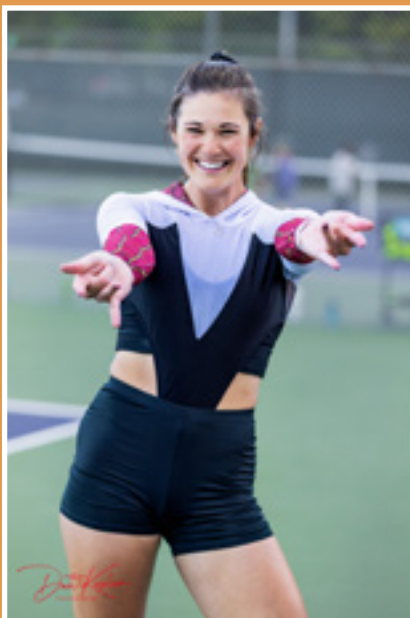


# HALLOWEEN POTLUCK

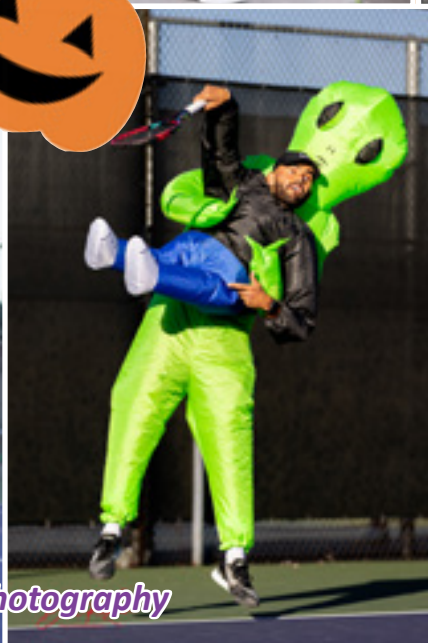
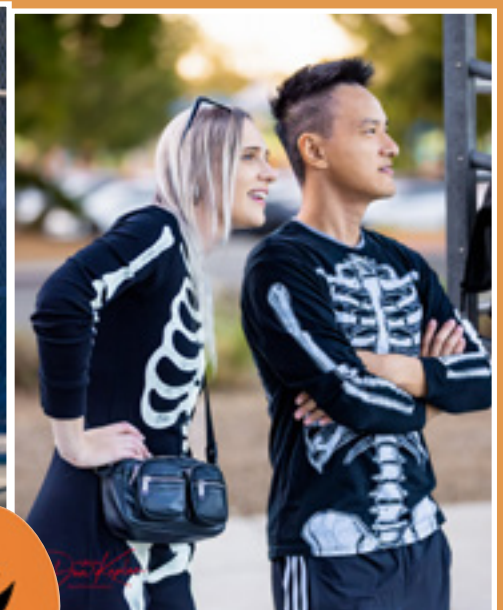
All photos uploaded here:  
<https://wcr.zenfolio.com/p836228838>



*Photos by Dan Kaplan Photography*

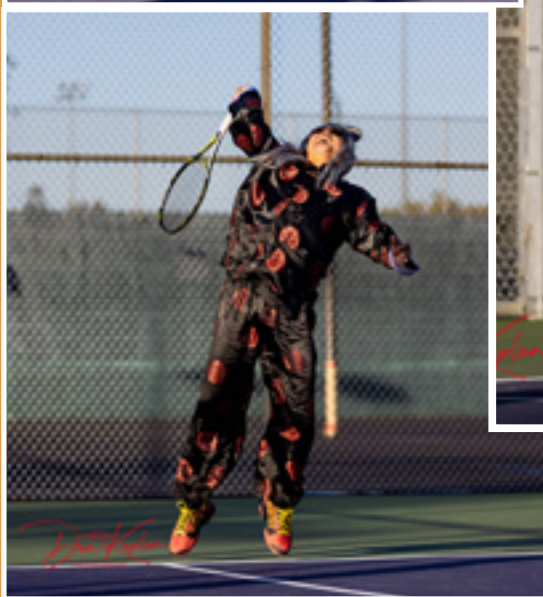






Photos by Dan Kaplan Photography





Photos by  
Dan Kaplan  
Photography



# CALENDER OF EVENTS

# 2023

**Nov**

**Dec**

Nov 3	USTA 70+ DT Season Closes
	USTA Combo DT Season Closes
Nov 4-5	WCRC Summer Singles Tournament
Nov 5	USTA 55+ Mixed Season Closes
	USTA Combo Season Closes
Nov 6	WING Singles League Opens
Nov 9-12	USTA 55+ Mixed Playoffs Round 1
Nov 13-17	USTA 70+ DT Playoffs Round 1
	USTA Combo DT Playoffs Round 1
Nov 16-19	USTA Combo Playoffs Round 1
	USTA 55+ Mixed Playoffs Round 2
Nov 27-Dec 1	USTA 70+ DT Playoffs Round 2
	USTA Combo DT Playoffs Round 2
Nov 30-Dec 3	USTA Combo Playoffs Round 2
	USTA 55+ Mixed Playoffs Round 3
Dec 4-8	USTA Combo DT Playoffs Round 3
Dec 7-10	USTA Combo Playoffs Round 3
Dec 8-10	USTA 55+ Mixed Sectionals
Dec 12-14	USTA 70+ DT Sectionals

## WCRC LEAGUES

**WING Singles League Opens - Nov. 6, 2023**

**Fall Mixed League - Aug 1 - Jan 26, 2024**

**Winter Doubles League - Jan 1 - June 2, 2024**

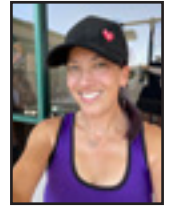
**Fall Mixed Tournament - Feb 2-4, 2024**

**Winter Doubles Tournament - June 14-16, 2024**

## TREASURER'S REPORT

Cara Mia Barnacascel

January - September, 2023



### Income

League Dues	
Fall Mixed Doubles League	86.12
Summer Singles League	4,142.86
WING singles	210.34
Winter Doubles League	1,174.39
Total League Dues	\$5,613.71
Membership Dues	17,546.90
Tournament Dues	
Total Calcutta Tournament	\$6,246.46
Total Tournament Dues	\$6,246.46
Total Income	\$29,407.07
Gross Profit	\$29,407.07

### Expenses

Board Appreciation Dinner	793.67
Board Meeting	716.50
Captains Meetings	872.68
Contributions	695.94
Gifts	64.95
League Expenses	
Total Fall Mixed League Expenses	\$2,009.32
Total Summer Singles Expenses	\$3,789.07
Total League Expenses	\$5,798.39
Nationals Fee	1,120.00
Nationals Stipend	1,000.00
Office Supplies	77.82
Total Printing and Reproduction	\$319.60
Sectionals Fees	1,670.00
Software	320.00
Supplies	60.87
Tax Preparation	335.00
Taxes	25.00
Tournament Expenses	
Total Calcutta Expenses	\$11,644.75
Inch by Inch	500.00
Total Tournament Expenses	\$12,144.75
Website	961.68
Total Expenses	\$26,976.85
Net Operating Income	\$2,430.22
Net Income	\$2,430.22

**Balance through August, 2023**

**\$73,321.12**



# Summer Singles League - FINAL Standings

## Men's

3.0	W	L
Steven Bliss	6	1
3.5		
Mitch Rose	7	3
4.0		
Jeff Smith	21	6
4.5+		
Jahan Vijeh	7	0

## Women's

3.0	W	L
Rebecca Erickson	4	0
3.5		
Stella So	5	0
4.0		
Karlene Steelman	1	0
4.5+		
Stephanie Areen	2	0

# Fall Mixed League - Standings

6.0	W	L
Kayla Baier/Chris Alexander	1	0
Miwa Yoneyama/Robert Mimaki	1	0
7.0		
Brigitte Shaw/Scott Judy	2	0
Katherine Ryan/Gordon Bonneville	2	0
8.0		
Kayla Baier/Alex Baier	1	0
Kathleen Pruden/Thomas Lyhne	1	0
9.0		
Cristina Tudor/Tal Yahud	1	0
Stephanie Areen/Steve Lehmer	1	0