



# THE COURT REPORTER

*Newsletter of the Walnut Creek Racquet Club*

*October 2007*

*Adam Borovkoff reaches up  
for a high overhead at the  
Fall Calcutta Tournament.*



## Walnut Creek Racquet Club

P.O. Box 4574 • Walnut Creek, CA 94596  
(925) 945-0105 • www.wcrc.net

### OFFICERS

<b>President</b>	<b>Shari Gonzalez</b> 691-9196 webmaster@wcrc.net
<b>Vice President</b>	<b>Tammie Snyder</b> 957-0604 tammie@gte.net
<b>Secretary</b>	<b>Carol Kennedy</b> 798-3870 caken@astound.net
<b>Treasurer</b>	<b>Gabriel Goldstein</b> 798-2036 gagoldsteinea@sbcglobal.net

### ACTIVITY CHAIRPERSONS

<b>Mailing</b>	<b>Janet Neilsen</b> 837-8664 janneilsen@juno.com
<b>Membership</b>	<b>Pege Amann</b> 934-5128 pegek@yahoo.com
<b>Newsletter</b>	<b>Tammie Snyder</b> 957-0604 tammie@gte.net
<b>Website</b>	<b>Shari Gonzalez</b> 691-9196 webmaster@wcrc.net
<b>Tournaments</b>	<b>Tammy Chan</b> 837-0227 tammychan@sbcglobal.net <b>Adam Borovkoff</b> 330-3154 aborovkoff@longs.com
<b>Leagues (Non-USTA)</b>	<b>Jennifer Scriabine</b> 939-4328 scriabine@astound.net <b>Susie Dunlap</b> 228-1641 susied98@aol.com
<b>USTA Leagues</b>	<b>Bret Jones</b> 228-7621 bretjones@comcast.net
<b>Daytime Leagues</b>	<b>Carolyn Spady</b> 938-0893 carhspa@aol.com
<b>Photography</b>	<b>Robert Young</b> 906-0614 robert@canterburytrails.com
<b>City of Walnut Creek Liason</b>	<b>Don Loeffler</b> 330-1605 donloeff@pacbell.net
<b>New Member Liason</b>	<b>Deanna Fong</b> 952-9935 deanna_fong@yahoo.com

## THE PRESIDENT'S REPORT

Well, it's October and it's a rather slow news month for USTA events. Adult season is over, Combo is just underway and Mixed and Seniors have not quite gotten going yet so not much to report on that front.



Shari Gonzalez  
2006 WCRC President

In club event news, this year's **Turkey Tournament** will be canceled in light of the **Club Championships** that will be held at the beginning of November over the weekend of November 2-4<sup>th</sup> at the Heather Farm Tennis Center. Format will be Men's Singles/Doubles, Women's Singles/Doubles and Mixed Doubles. Participants are encouraged to sign-up for more than one event and matches may be shortened to accommodate scheduling over the weekend. Sign-up either on-line or using the entry form in this month's newsletter. This looks like it's going to be a great event so if you're around that weekend, I'd recommend that you sign up to play or come out and watch the tennis.

Also in club event news, the WCRC for the first time held 2 Calcuttas this year and I have to say that both were very successful events – thanks in no small part to all of our volunteers including **Nat Bitton, Tammie Snyder, Gabe Goldstein, Adam Borovkoff, Jennifer Scriabine, Carol Kennedy, Al Johns** and **Jesse & Shari Gonzalez**. See the article in this month's newsletter for the details.

We still have 1 opening for the **2008 WCRC Board**. We're still in need of a Treasurer for 2008 – responsibilities include balancing WCRC books, processing accounts payable and receivable and monthly financial reporting. Please contact any board member if you're interested in this position.

Finally, go team USA! As I write this the US Davis Cup team is tied at 1-1 against Sweden with the Bryan brothers due to play tomorrow – this looks like it might be the year for the US – go team!

See you on the courts.







**New Member  
Information  
Removed for  
Privacy**







**Finalists**  
**Pat Beauchemin**  
**and Linda Hurd**

The first ever **FALL Calcutta** was another club success. With Friday nights get together and auction, teams were bought up in hopes that they could be a cash winner. The tournament



**Winners**  
**Jerry O'Neal**  
**Nancy Chan**



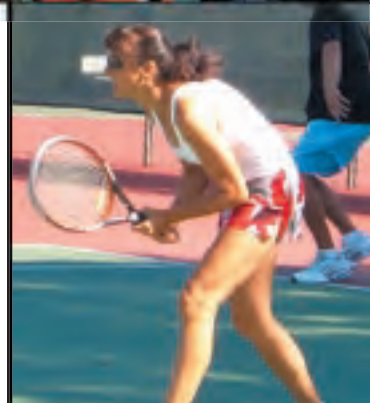
**Owners Finalist Team**  
**Pat Beauchemin**

on Saturday consisted of 32 mixed teams. Play continued throughout the day with beautiful weather and some excellent tennis. The main draw finals were between **Linda Hurd and Pat Beauchemin** (-18 handicap) against **Nancy Chan and Jerry O'Neal** (+3). The teams tied up at 15-15 when Jerry and Nancy started to shake off the nerves and began playing some amazing tennis. The final score couldn't have been any closer with Pat just missing the alley wide at 35-35 with Nancy and Jerry taking the tournament at 36-35. Jerry and **Shashi Kamath** owned their team which they bought for \$150 and won \$560! Pat owned his team and walked away with \$340 for his \$100 investment.

The consolation round was almost as close with



**Owners Winning Team**  
**Shashi Kamath • Jerry O'Neal**



**Consolation Finalists**  
**Marianne Dundon • Sterling Fairholm**

**Sharon Greene and Juan Cedano** (-12) meeting up with **Marianne Dundon and Sterling Fairholm** (-15). The game was so close that the lead was transferred back and forth between each team numerous times. Ultimately it was Sharon and Juan's steadiness that gave them the win at



**Consolation Winners**  
**Sharon Greene • Juan Cedano**



**Owner Consolation Finalist**  
**Linda Stern**

36-33. **Judy Stillman, Pauline Hanley and Susie Dunlap** were the proud owners of Sharon and Juan and split \$255 for their mere \$70 investment. **Linda Stern** owned Marianne and Sterling and took home \$120.



**Owners Consolation Winning Team**  
**Judy Stillman, Pauline Hanley, Susie Dunlap (Juan and Sharon)**









# 38th Annual CLUB CHAMPIONSHIPS



## 2006 CHAMPIONS:

Women's 3.5 Singles	Deanna Fong
Women's 3.0 Singles	Anne McCormick
Men's 4.0 Singles	Charles Kearney
Men's 3.5 Singles	Dan Boeriu
Women's 4.0 Doubles	Marianne Dundon & Jennifer Rowen
Women's 3.5 Doubles	Cory Carr & Tammie Snyder
Men's 4.5 Doubles	Gary Harris & Carlos Manuel
Men's 4.0 Doubles	Debashis Panda & Pec Untal
Men's 3.5 Doubles	Shashi Kamath & Dave Engle
Mixed 8.0	Martin Dunlap & Marianne Dundon
Mixed 7.0	Don & Sandra Maker

**WHEN:** November 2-4 - Singles/Doubles/Mixed  
**WHERE:** Walnut Creek Tennis Center  
**EVENTS:** Men's Singles/Doubles  
 Women's Singles/Doubles  
 Mixed Doubles

**DIVISIONS:** TBD based on entries

**FEES:** \$15/person  
 \$30/yourself & a partner  
 \$45/yourself, doubles & mixed partners

**DEADLINE:** Must be postmarked by **October 15**  
*(late entries \$10 extra, only if space available)*

**ALSO:** Possible use of handicap system if not enough entries for A/B/C divisions

All matches shortened / time limited (e.g. Pro Set; 1 hour match limit, especially early rounds and Friday matches) to allow members to enter more events, avoid late starts and play most matches at Heather Farms.

*\*\*Entry fees include tennis balls and BBQ. Participants are guaranteed at least two matches -- consolation rounds will be held (some may be held at satellite sites).*

*Note: You must be an active member of the WCRC to play in the Club Championships.*

*Number of divisions based on number of entries.*

*Please donate old/broken racquets for special event TBA.*

## REGISTRATION FORM - PLEASE REGISTER ONLINE!!

Name \_\_\_\_\_ Phone \_\_\_\_\_

Email \_\_\_\_\_ NTRP Rating \_\_\_\_\_

Doubles Partner \_\_\_\_\_ Phone \_\_\_\_\_

Email \_\_\_\_\_ NTRP Rating \_\_\_\_\_

Mixed Partner \_\_\_\_\_ Phone \_\_\_\_\_

Email \_\_\_\_\_ NTRP Rating \_\_\_\_\_

Please check the appropriate event(s)/division you would like to play: ☐ Male ☐ Female  
☐ Singles ☐ Doubles ☐ Mixed  
 Will you play at higher level? ☐ Prefer ☐ Willing ☐ Not Willing

Make checks payable to WCRC and send to:  
 Gabe Goldstein • 3075 Citrus Circle #205 • Walnut Creek, CA 94598  
 Questions? Email Martin Dunlap at [dunlap911@sbcglobal.net](mailto:dunlap911@sbcglobal.net)

**on-line registration available at [www.wcrc.net](http://www.wcrc.net)**



# CALENDAR OF EVENTS

## Oct

- 5-7:** USTA Fifty Mixed Sectional Champs  
**5-7:** WCRC Summer Singles League  
 Tournament - Round I  
**13-15:** USTA 50 Mixed Sectional Champs  
**13-14:** WCRC Summer Singles League  
 Tournament - Round II  
**14:** USTA Super Seniors 60 Season ends  
**17-19:** USTA Super Senior 65 District Champs  
**19-21:** USTA Super Seniors 60 Local League  
 Playoffs - Round I  
**26-28:** USTA Super Seniors 60 Local League  
 Playoffs - Round II

## Nov

- 2-4:** WCRC Club Championships  
**16-18:** USTA Mixed Doubles Nat'l Championships  
 USTA Super Sr. 60 Sect. Championships  
**18:** USTA Combo Doubles Season Closes

## Dec

- 30-2:** USTA Combo Doubles Local League  
 Playoffs - Round I  
**7-9:** USTA Combo Doubles Local League  
 Playoffs - Round II

# MARK YOUR CALENDARS

## TREASURER'S REPORT

**Gabe Goldstein**

Income Statement:  
as of August 31, 2007



### INCOME

Winter Doubles League '07	3,484.00
Awards Banquet '07	2,440.00
Mid-Summer Madness Tournament	24.00
Mardi Gras Fees	360.00
Interest	13.69
Advertising	550.00
Membership Dues	9,890.00
Board Dinner	150.00
Summer Singles League	8,497.00
Calcutta Tournament Spring	\$4,024.88

---

**Total Income** **\$29,433.57**

### EXPENSES

Awards Banquet 2007	3,844.90
Board Meeting Expense	50.00
Club Championships 2006	200.00
Mardi Gras	233.29
Nationals Stipend	1,000.00
Commission	656.23
Dues & Subscriptions	25.00
Mid-Summer Madness Tournament	45.00
Bank Service Charge	10.00
Light Fund Payment	3,053.00
Newsletter - Court Reporter	4,499.85
Membership Directory	2,170.93
Membership Brochures	32.48
Postage	1,917.00
Post Office Box Rental	63.00
Supplies	929.26
Website	556.55
Board Dinner Expenses	717.57
Court Resurfacing - Northgate	8,000.00
Winter Doubles 2007	4,210.88
Calcutta Tournament Spring	4,584.88

---

**Total Expenses** **\$ 36,799.82**

**Profit (Loss)** **– \$ 7,366.25**

---

**Balance August 31, 2007** **13,246.82**



WCRC  
P.O. Box 4574  
Walnut Creek, CA 94596  
[www.wcrc.net](http://www.wcrc.net)

PRESORTED  
STANDARD  
U.S. POSTAGE  
**PAID**  
Walnut Creek, CA  
Permit No. 432



## DON LOEFFLER

*Realtor Associate*

[don@donloeffler.com](mailto:don@donloeffler.com)  
[www.donloeffler.com](http://www.donloeffler.com)

Direct: 925.407.8925  
Cell: 925.330.1605

3021 Citrus Circle, Suite 100  
Walnut Creek, CA 94598

# Got Don?

*Call Don to sell your home • Call Don to buy your home • Call Don now!*