



THE COURT REPORTER

Newsletter of the Walnut Creek Racquet Club

August, 2008

Dexter Loo prepares for a put away volley during one of his matches at the Mid-Summer Tournament on July 26th.

Photo by: Robert Young

Walnut Creek Racquet Club

P.O. Box 4574 • Walnut Creek, CA 94596
(925) 945-0105 • www.wcrc.net

OFFICERS

President	Tammie Snyder 957-0604 tammie@gte.net
Vice President	Adam Borovkoff 330-3154 aborovkoff@mac.com
Secretary	Deanna Fong 952-9935 deanna_fong@yahoo.com
Treasurer	Lynne Weinschelbaum 285-9503 lweinschelbaum@yahoo.com

ACTIVITY CHAIRPERSONS

Mailing	Janet Neilsen 837-8664 janneilsen@juno.com
Membership	Pege Amann 934-5128 pegek@yahoo.com
Newsletter	Tammie Snyder 957-0604 tammie@gte.net
Website	Shari Gonzalez 691-9196 webmaster@wcrc.net
Tournaments	Tammy Chan 324-0524 tchanderson@gmail.com Adam Borovkoff 330-3154 aborovkoff@mac.com
Leagues (Non-USTA)	Jennifer Scriabine 939-4328 scriabine@astound.net Susie Dunlap 228-1641 susied98@aol.com
USTA Leagues	Bret Jones 890-1416 bretjones@comcast.net
Daytime Leagues	Pam Maloney 787-3970 pam4tennis@hotmail.com
City of Walnut Creek Liason	Don Loeffler 330-1605 donloeff@pacbell.net
New Member Liason	Myrl Kan 827-2406 mckan@webtv.net

THE PRESIDENT'S REPORT

So now everyone has gotten their first e-issue, it's great for saving our earth, as well as everything is in color on-line!

We had 10 teams in Adult USTA make it to post season. Congratulations to **Shari Gonzalez' 4.0 women's team** (who ended their regular season at 14-0)!

Ron Huxley's 3.5 men's team and Mike Willis' 4.5 men's team will also be heading to Districts at Vintage High School in Napa August 8-10! Good luck at Districts everyone!



Tammie Snyder
2008 WCRC President

Congratulations also to **Dave Sperry's Super Senior 65 Men's 3.5** and **Jim Farber's Super Senior 65 Men's 4.0** teams both heading to Sectionals. A great season for both **Gerry Brown's Super Senior 65 Men's 3.5** team and **Frances Bagnasco's Super Senior 65 Women's 3.5** team who made it to playoffs. Good luck to Dave, Jim and their players who will be heading to Sectionals September 15-17th at Harbor Bay Club in Alameda.

The **Summer Singles League** is about halfway through the season. We have 175 men's singles and 94 women's players. If you haven't had a chance to play a match, please let league coordinator **Jennifer Scriabine** know and she can fill your spot with a back up player.

Speaking of WCRC Leagues we are introducing our first ever **Fall Mixed Doubles League**. We are offering a new league due to the USTA postponing mixed league until January. To help keep our skills honed and meet some new players, find a partner and join our mixed doubles league. Details can be found on page 4 & 5.

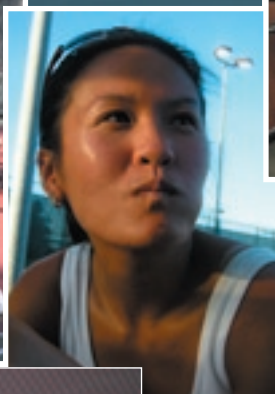
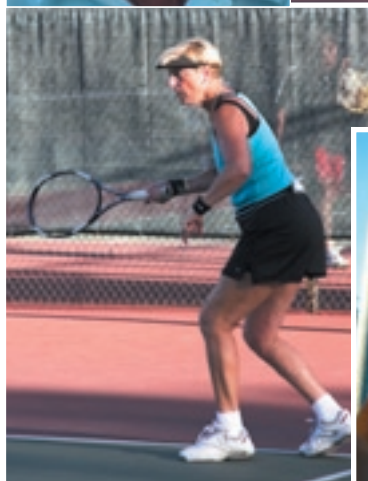
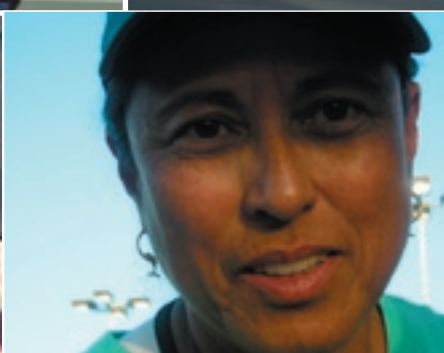
If you didn't get a chance to play our **Mid-Summer Tournament**, it was a success. A lot of players came out and enjoyed some fun tennis and enjoyed meeting some new people.

See you on the courts...

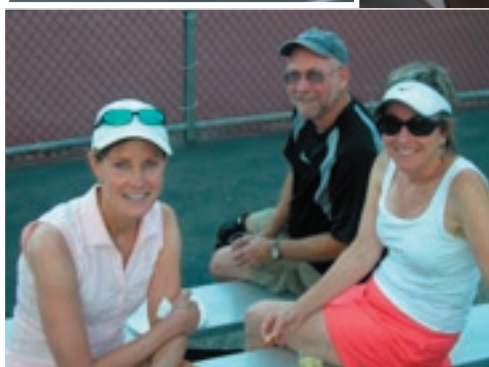




Mid-Summer Night Tennis



Winners



BLUE TEAM
Marylyn Bustos, Justin Snyder,
Meredith and Robert Young

WHITE TEAM
Mike and Beth Calvo
Alan and Nancy Chan

WCRC Fall Mixed Doubles League Registration Form (Also on-line at www.wcrc.net)

MALE PLAYER

FEMALE PLAYER

Name	_____	_____
Mailing Address	_____	_____
City	_____	_____
ZIP Code	_____	_____
Home Phone	_____	_____
Work or Cell Phone	_____	_____
E-mail address	_____	_____
NTRP level	_____	_____

WCRC Member?

☐ YES ☐ NO

☐ YES ☐ NO

Division for which you are registering (please check one):

☐ Mixed 6.0

☐ Mixed 7.0

☐ Mixed 8.0

☐ Mixed 9.0

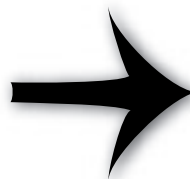


On-Line Registration will remain open until **August 29, 2008**. If you would like to register by mail, return this form by **August 22, 2008** with a check for registration fees (payable to WCRC) to: WCRC, 970 Janet Lane, Lafayette, CA 94549.

Questions?

**Call Pam Maloney at 925-787-3970
or via e-mail pam4tennis@hotmail.com**

Find detailed Information on page 5...



League Information: Players may enter the WCRC Mixed Doubles League in more than one division (i.e. 6.0 and 7.0), as long as he/she is not playing below his/her level. If a player is entering in more than one division, he/she may enter with the same partner or a different partner but may not enter with different partners at the same level.

Once League play is complete and registration for the end-of-League Tournament begins, a player may enter the Tournament at more than one level. However, if scheduling problems arise the Tournament Director will require the player with a conflict to forfeit the division of his/her choice. **No exceptions will be made for match rescheduling if this situation arises.**

WCRC Fall Mixed Doubles League

Registration Form (Also on-line at www.wcrc.net)

We will continue to offer on-line scoring and real-time updated standings for all four (4) divisions. Don't forget that the league registration fee includes 12 regular season doubles matches, a league gift and may include an end of the season tournament dependent upon weather and court scheduling.

LEAGUE COMMISSIONER

Pam Maloney 925-787-3970

DATES

September 1, 2008 – January 4, 2009

ENTRY FEES

WCRC Members

On-Line Registration: \$15 (\$30 per team)

Mail In Registration: \$20 (\$40 per team)

Non WCRC Members

On-Line Registration: \$25 (\$50 per team)

Mail In Registration: \$30 (\$60 per team)

FORMAT

Mixed Doubles, 16-week regular season
(players grouped by combined NTRP level; ie. 7.0 can be a 4.0 man and a 3.0 woman or two 3.5 players)

NTRP LEVELS

Mixed 6.0-9.0

SCHEDULING

Up to twelve (12) matches are provided for each team to complete during the 16-week season. Schedules will be posted on the Walnut Creek Racquet Club website during the last week of August and an informational email will be sent to all players. Players are responsible for scheduling their own matches at any site that is mutually agreeable between opponents.

MATCH FORMAT

Best two-out-of-three set format, 12-point tiebreaker (regular scoring). No SUPERTIEBREAKERS! Both teams responsible for bringing balls to match; winning team gets unopened can. Matches should be played according to the "Rules of Tennis."

TOURNAMENT

End of season tournament with draw determined by the league standings to be held over a weekend TBD dependent upon court scheduling and weather. To qualify for the tournament, teams must have completed and reported at least 6 matches during the regular league season. Depending on the number of entrants tournament play may include Friday night play. In addition, draws with large numbers of players may be required to play matches prior to the tournament weekend. Seeding for the tournament will be based on regular season standings. The more matches you and your partner play, the higher your ranking will be.





Tennis News



Heather Farms Invades Wimbledon

Nat Bitton, Irv and Chris Pearlstein, Al Johns and Liz Riddle, Herb Koss, Debbie and Pete Hellmann all went to Wimbledon this year. Sad to say they had to queue for tickets. Here are a couple of photos. One shows Herb and Nat napping while in the queue. Another shows them standing in the queue. And the last shows all of them at the tournament.



Summer Singles League - Standings

Men's

	W	L
3.0		
John Westphal	5	1
3.5		
Hank Holmes	7	0
4.0		
Mitchell Rose	5	0
4.5		
Mario Rizzo	7	2
5.0/5.5		
Bryan Golledge	2	1

Women's

	W	L
2.5		
Florence Huang	2	0
Jennifer Golledge	2	0
3.0		
Sarah Lindahl	2	0
3.5		
Donna Himenez	6	2
4.0		
Shari Kakiuchi	4	0
4.5/5.0		
Marianne Dundon	6	0

CALENDAR OF EVENTS

Aug

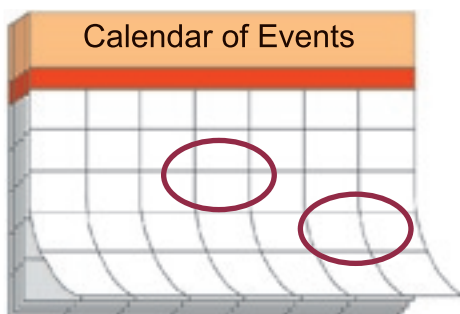
- 1-3:** USTA Adult District Championships
5: USTA Registration for Senior League Season closes
8-10: USTA Adult District Championships
13-19: USTA WCRC court assignment meeting for Senior League exact date TBD, Captains must attend
22-24: USTA Adult Sectional Championships

Sept

- 1** WCRC Fall Mixed League Begins
5-7: USTA Fifty Mixed Local League Playoffs – Round I
12-14: USTA Fifty Mixed Local League Playoffs – Round II
11-13: USTA Super Seniors Sectionals
15-17: USTA Super Senior 65 Sectionals
19-21: USTA Super Senior 60 Local League Playoffs – Round I
26-28: USTA Super Senior 60 Local League Playoffs – Round I

Oct

- 4-5** WCRC Summer Singles Tournament
10-11 WCRC Summer Singles Tournament



TREASURER'S REPORT

Lynne Weinshelbaum

as of June 30, 2008



Walnut Creek Racquet Club

Profit & Loss

January through June 2008

	Jan - Jun 08
Income	
Awards Dinner 08	1,954.00
Winter Doubles 08 Income	8,781.00
Interest Income	9.27
Advertising Income	350.00
Membership Dues	11,328.68
Board Dinner	233.00
Summer Singles League	6,325.00
Calcutta Tournament	3,445.00
Total Income	32,425.95
Expense	
Winter Doubles 08	5,261.74
Board Appreciation	483.55
Awards Banquet '08 Expenses	3,401.35
Club Championships 07 Expenses	475.38
Board Meeting Expense	118.67
Paypal Fees	826.47
Donations	75.78
Member Directory	64.95
Newsletters-Court Reporter	3,694.71
Non-Profit Fees	55.00
Postage	1,083.00
Post Office Box Rental	70.00
Supplies	973.54
Website	707.50
Board Dinner Expenses	878.27
Calcutta Tournament Expense	3,575.07
Total Expense	21,744.98
Net Income	10,680.97

Balance June 30, 2008

\$18,374.25

If you are looking to advertise, submit an article or photograph for an upcoming newsletter, please contact Tammie Snyder at 925-957-0604 or email her at tammie@gte.net.

Deadline for the September issue is Friday, August 22nd.



WCRC
P.O. Box 4574
Walnut Creek, CA 94596
www.wcrc.net

PRESORTED
STANDARD
U.S. POSTAGE
PAID
Walnut Creek, CA
Permit No. 432



DON LOEFFLER

Realtor Associate

don@donloeffler.com

www.donloeffler.com

Direct: 925.407.8925

Cell: 925.330.1605

3021 Citrus Circle, Suite 100
Walnut Creek, CA 94598

Call Don!

Call Don for a FREE market analysis of your home or to discuss opportunities in this exciting market. Call Don today!